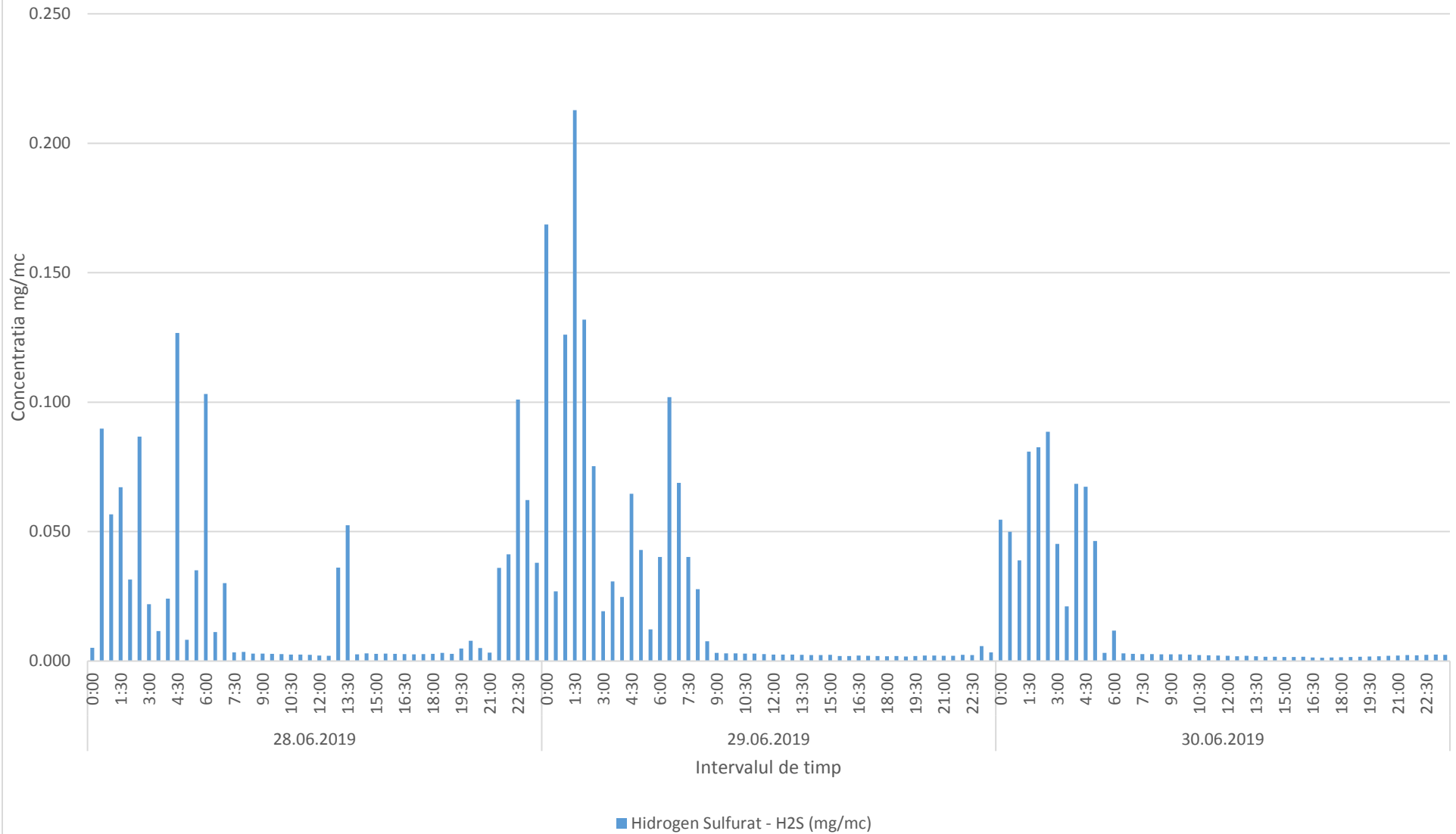
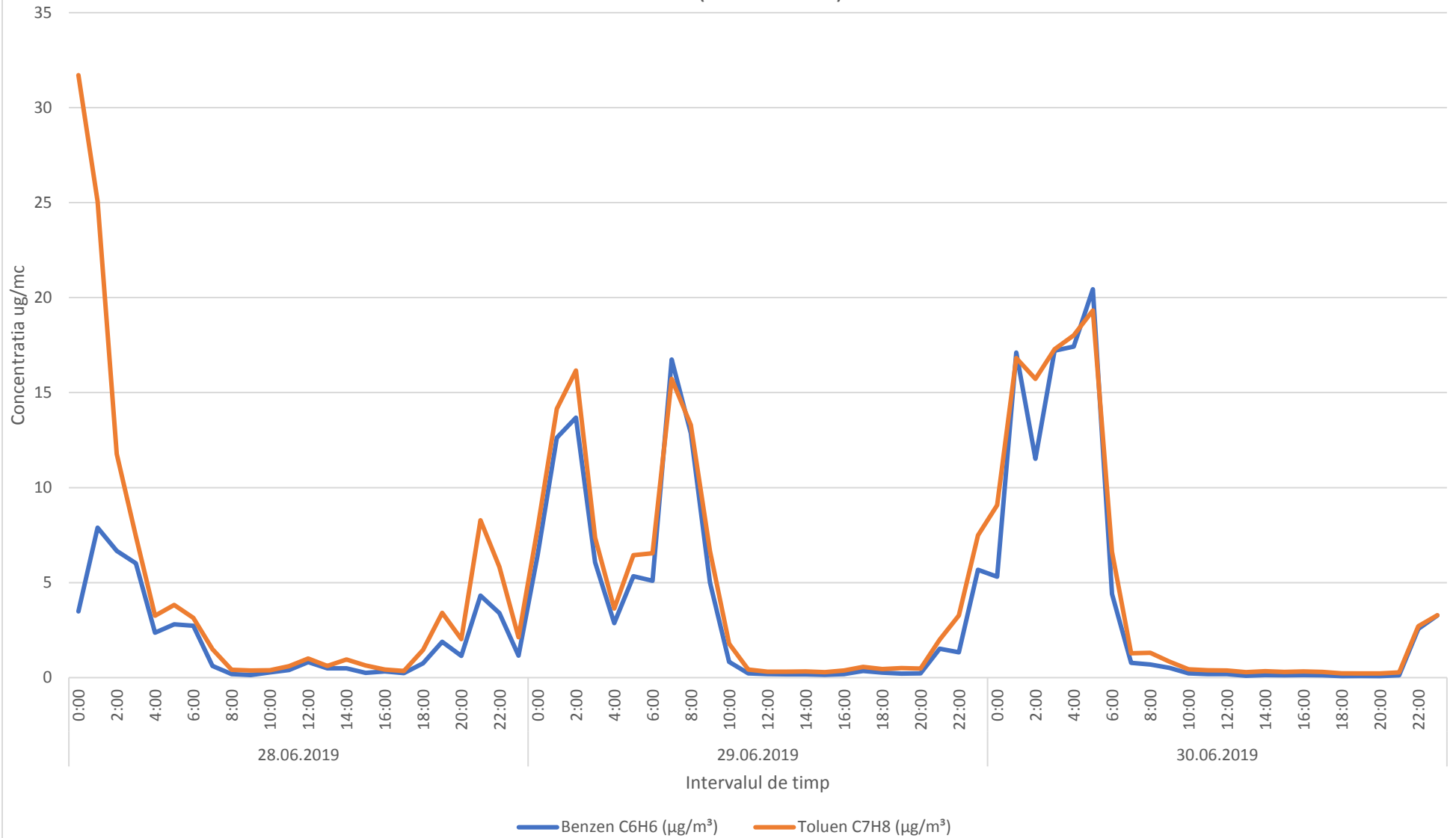


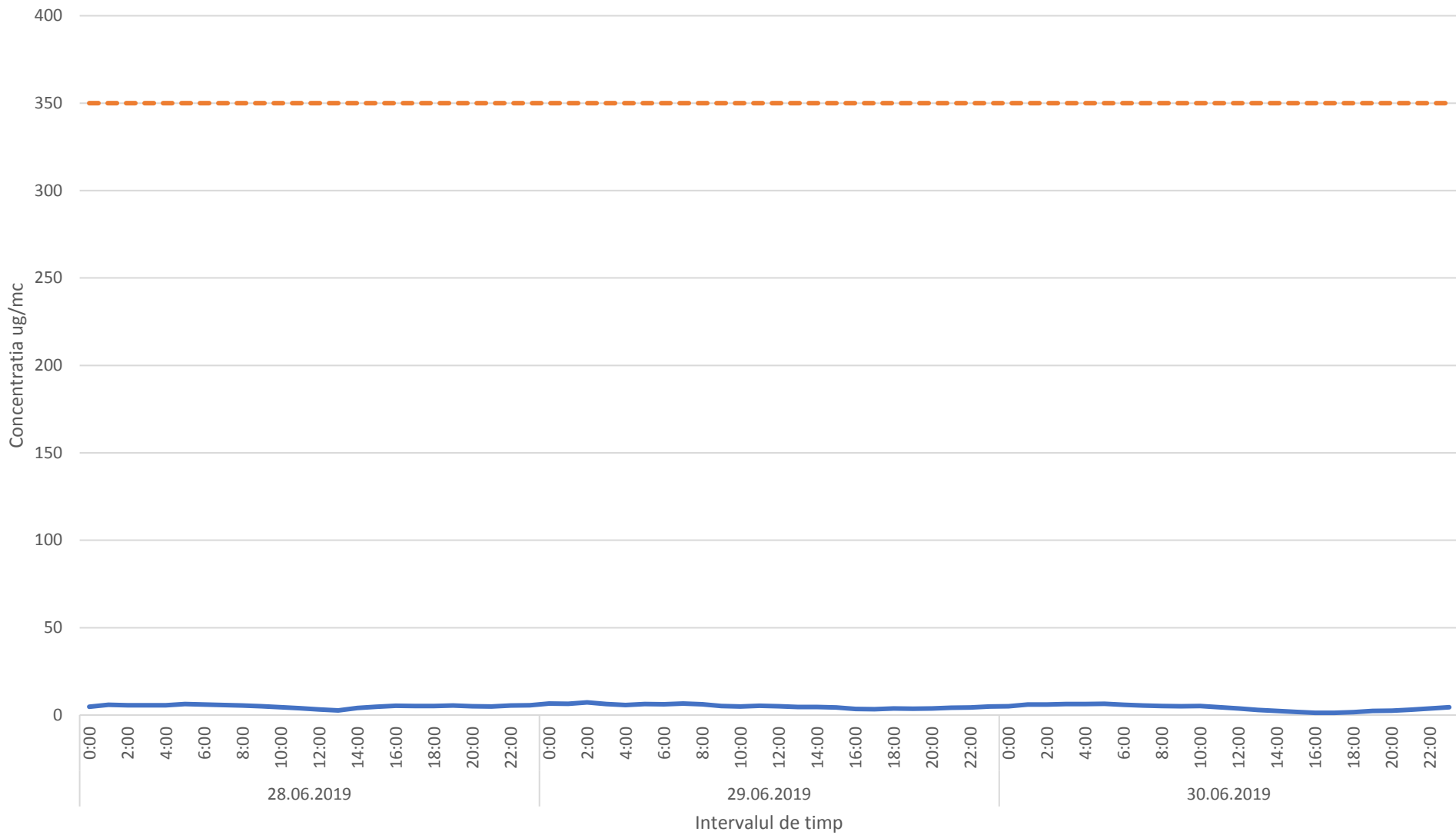
Variatia momentana a indicatorului H2S in perioada 28.06.2019-30.06.2019- zona cartierului Tintea, oras Baicoi (Class Beton)



Variatia indicatorilor C6H6,C7H8 in perioada 28.06.2019-30.06.2019- zona cartierului Tintea, oras Baicoi (Class Beton)



Variatia indicatorului SO2 in perioada 28.06.2019-30.06.2019- zona cartierului Tintea, oras Baicoi (Class Beton)



— Dioxid de sulf SO2 (ug/mc) - - - VL 350 ug/mc

Variatia indicatorului NO2 in perioada 28.06.2019-30.06.2019- zona cartierului Tintea, oras Baicoi (Class Beton)

