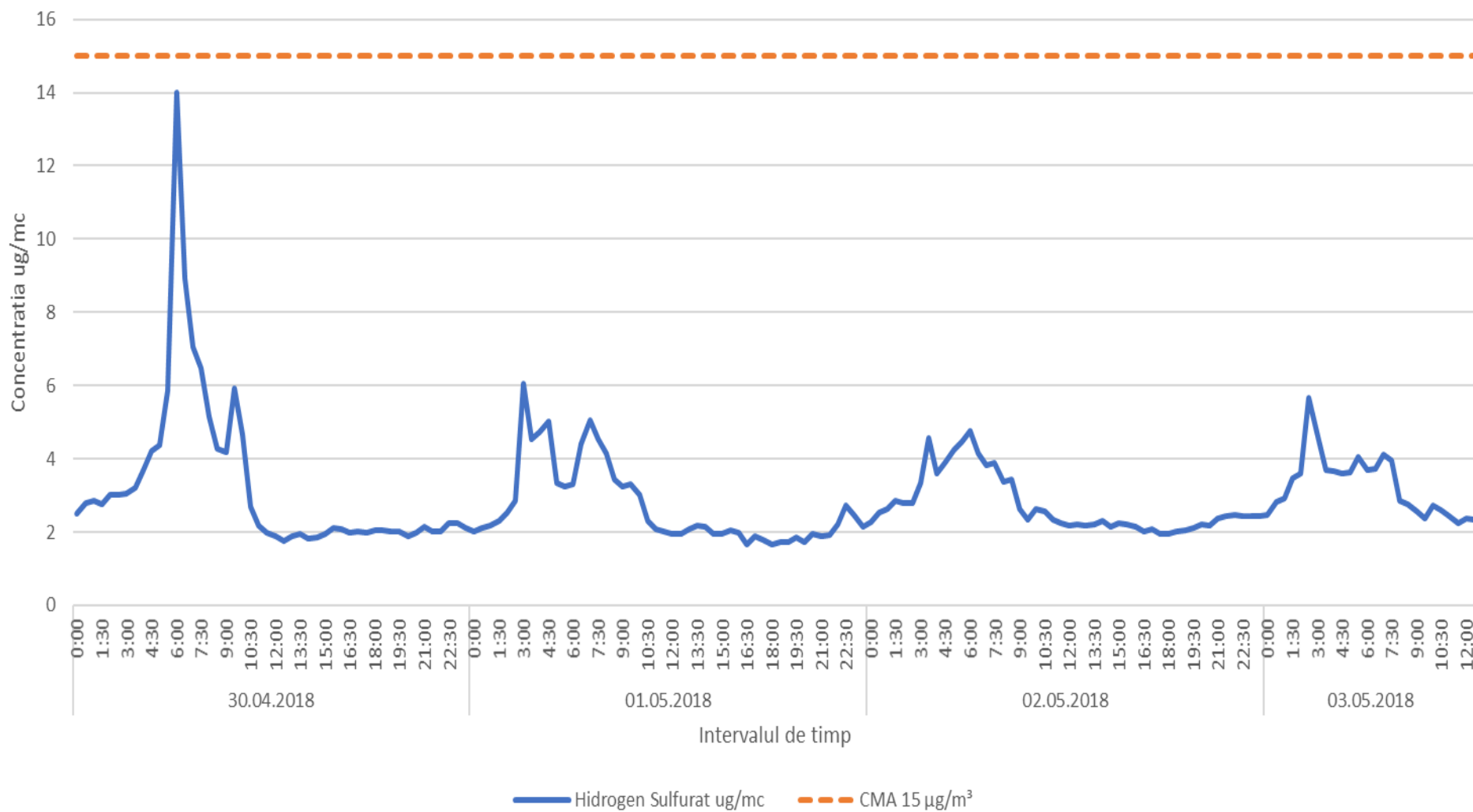


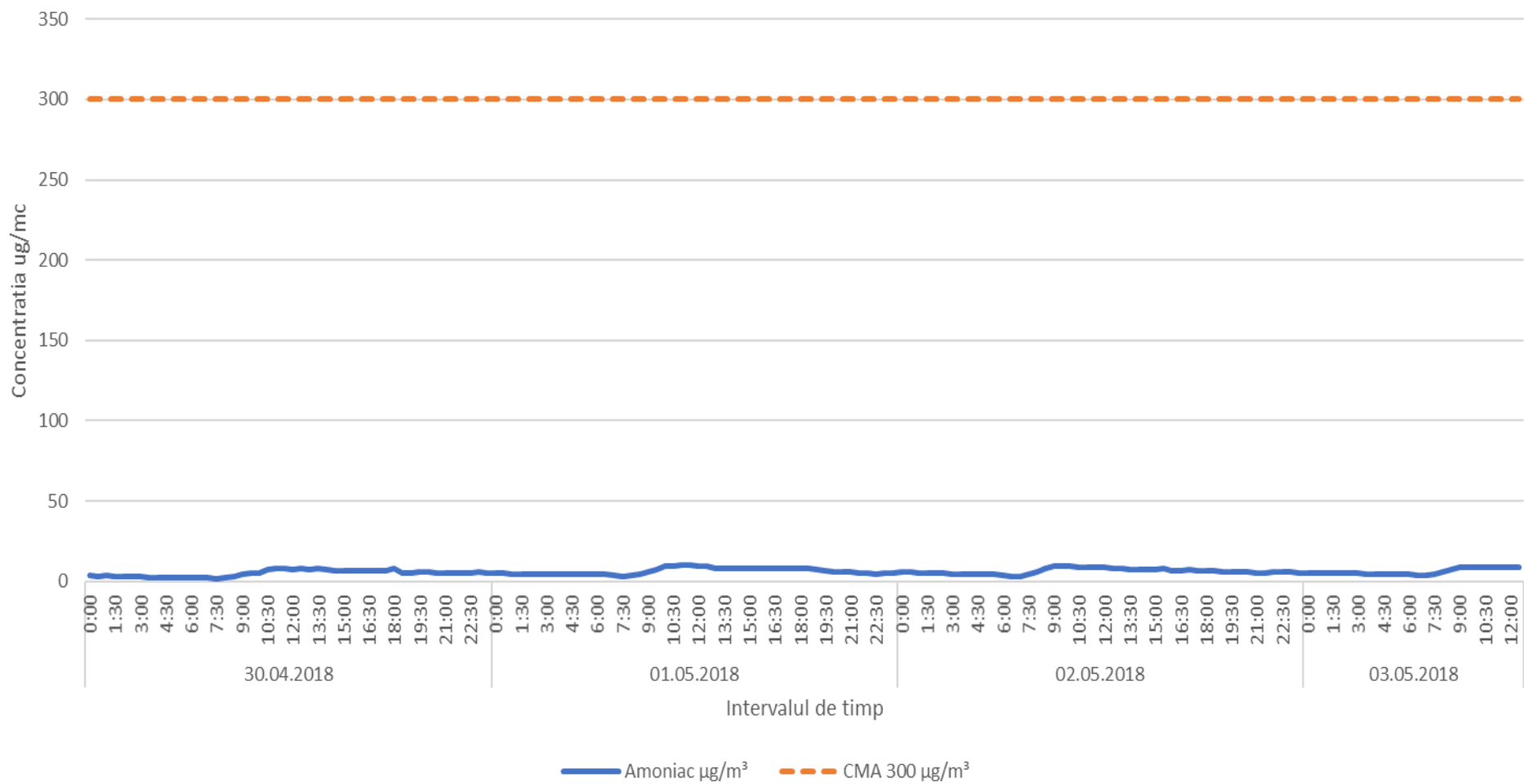
In data de 19.04.2018 laboratorul mobil a fost amplasat in zona de est a platformei industrial Brazi conform planului de monitorizare suplimentara al APM Prahova. Mai jos sunt prezentate rezultatele monitorizarii in perioada 30.04.2018-03.05.2018 precum si harta pozitionarii acestuia.



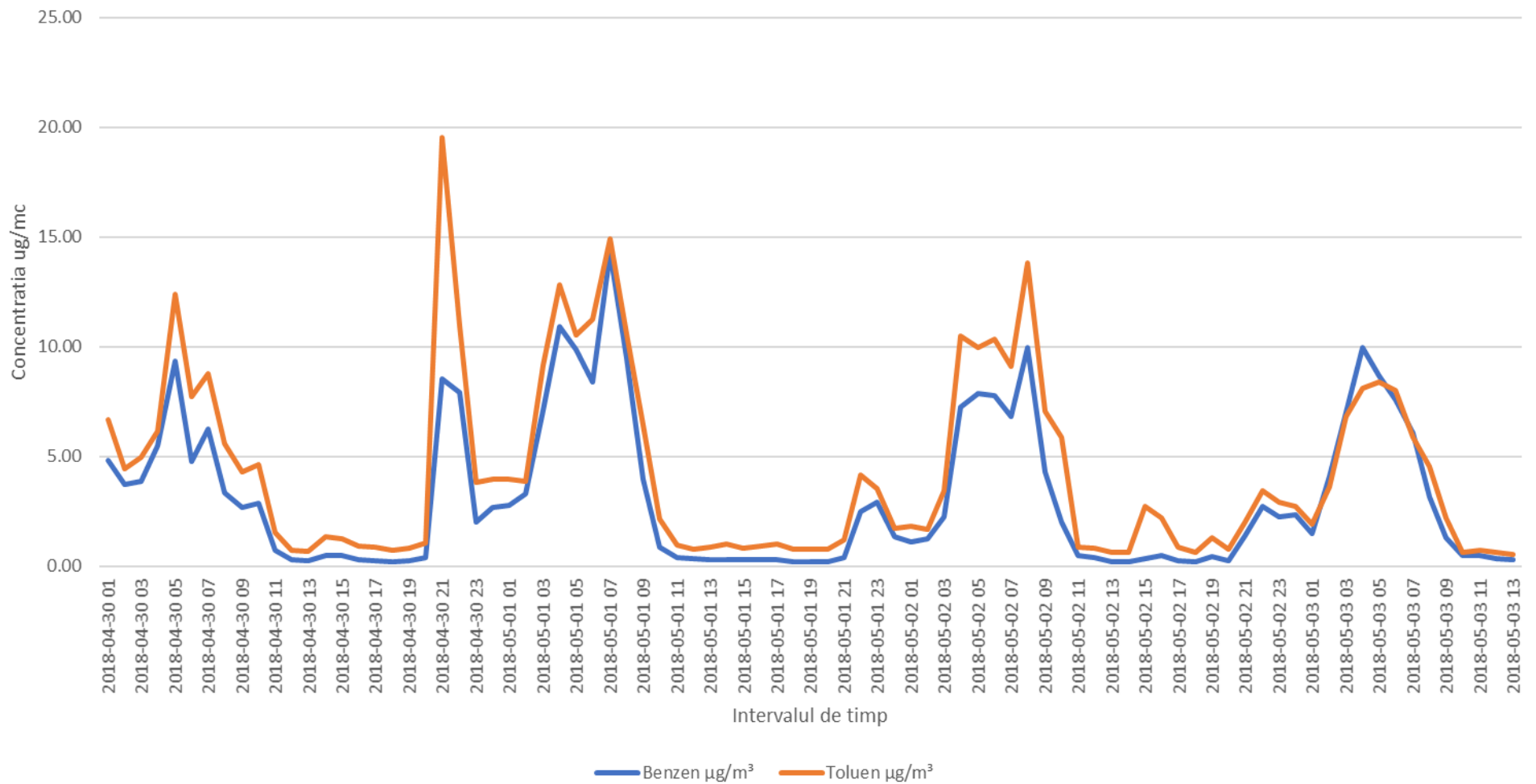
# Variatia indicatorului H2S in intervalul 30.04.2018 - 03.05.2018 in zona de E a platformei industriale Brazi



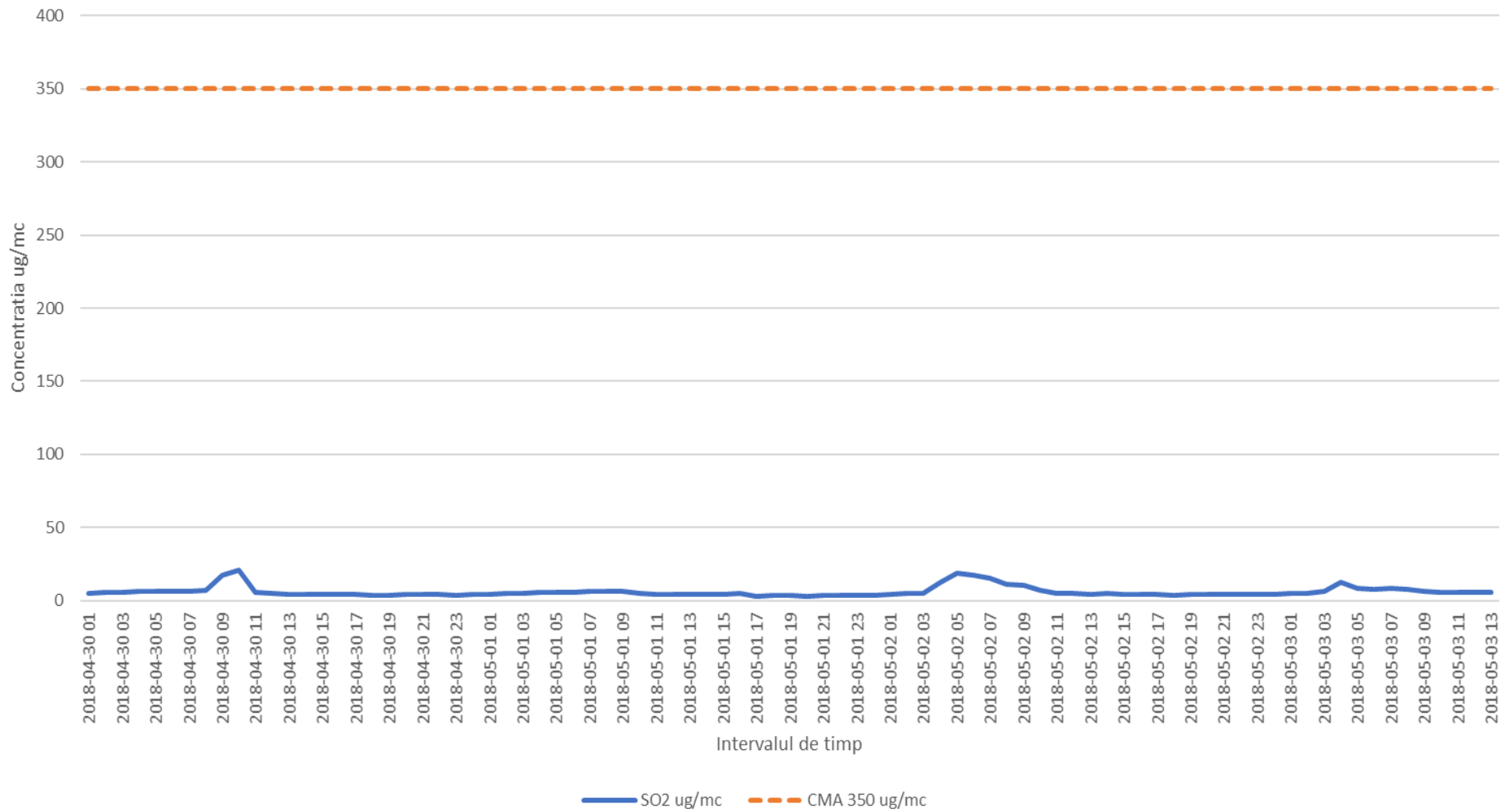
# Variatia indicatorului NH3 in intervalul 30.04.2018 - 03.05.2018 in zona de E a platformei industriale Brazi



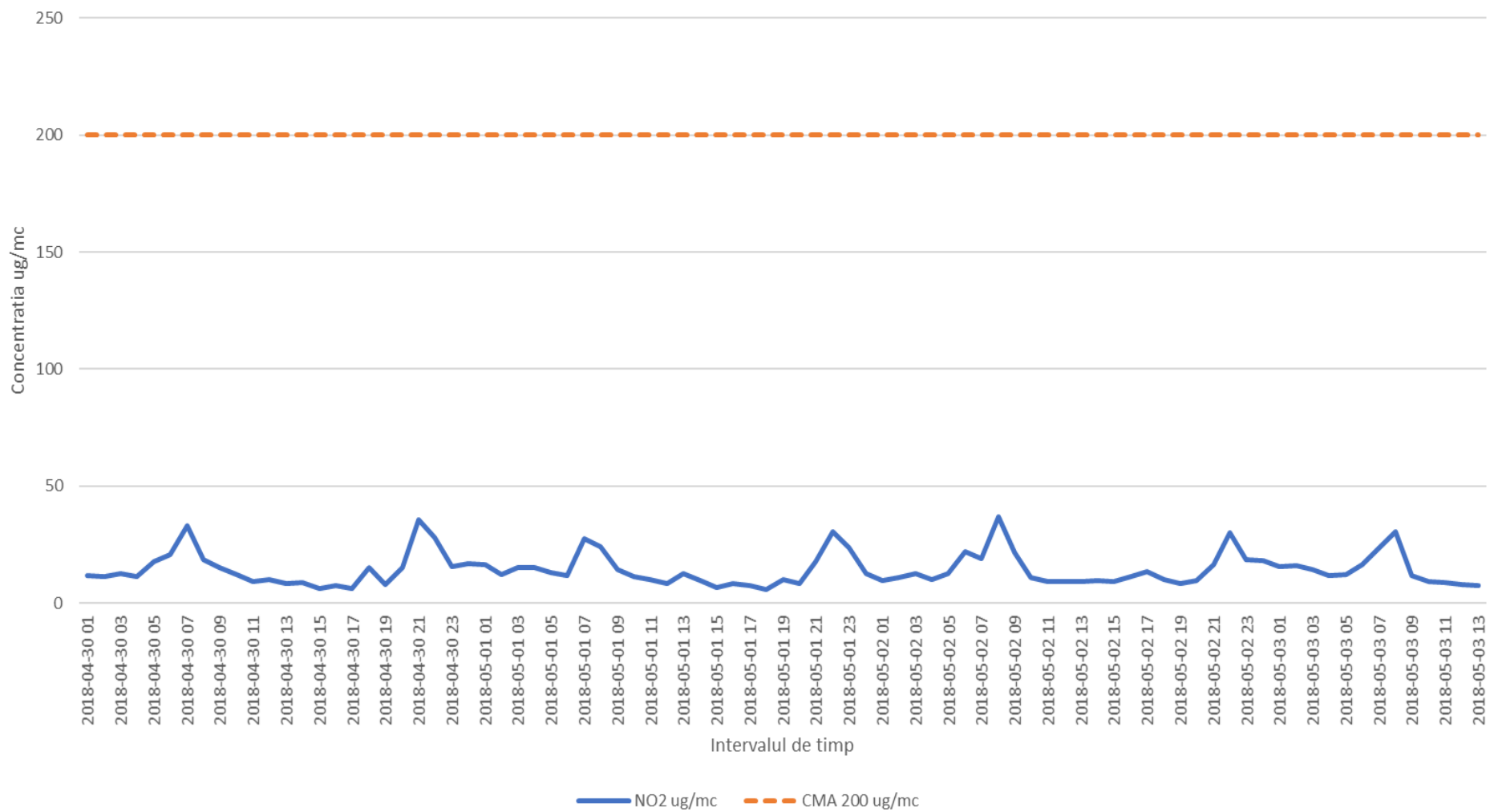
### Variatia indicatorilor Benzen/Toluen in intervalul 30.04.2018 - 03.05.2018 in zona de E a platformei industriale Brazi



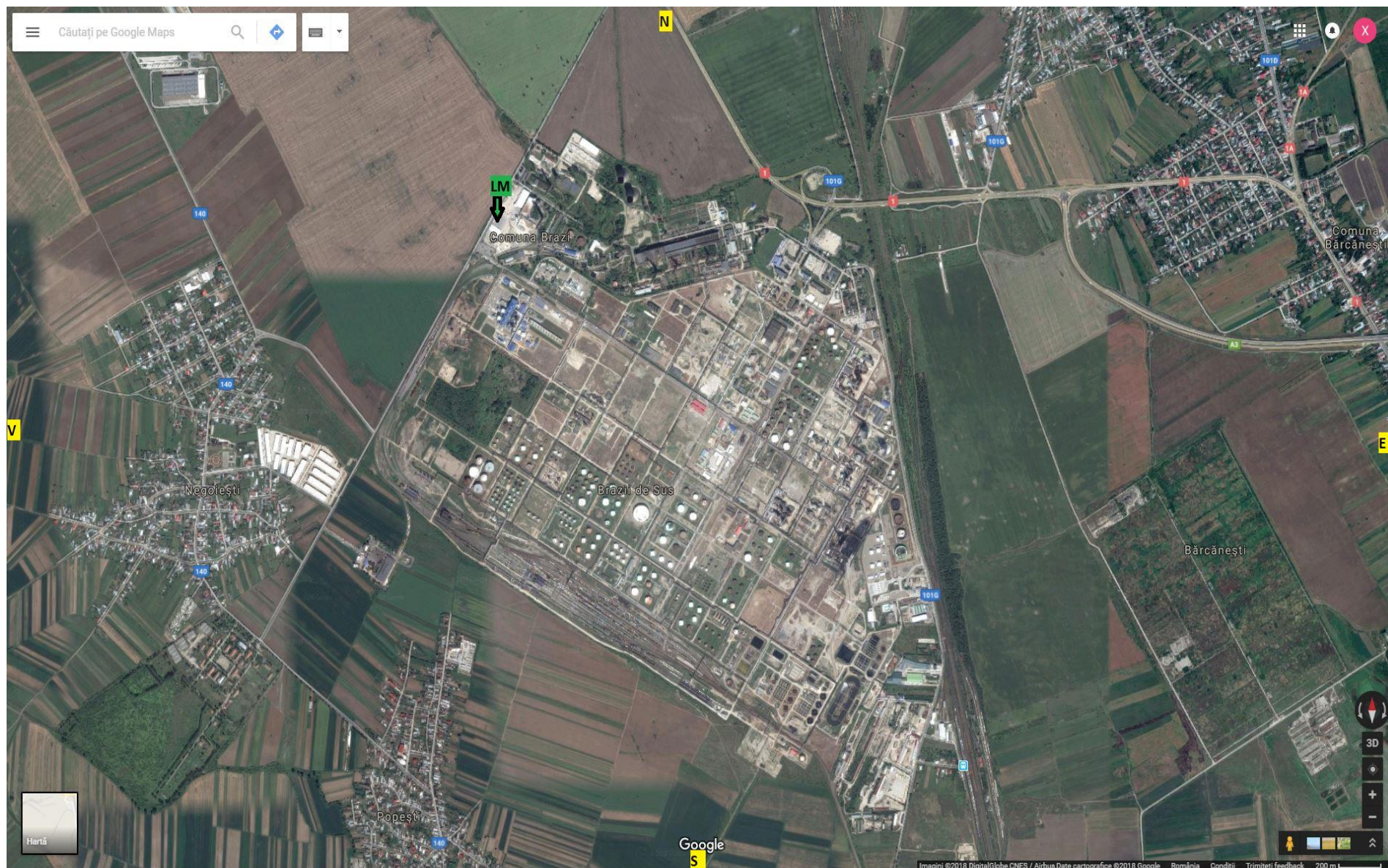
Variatia indicatorului SO2 in intervalul 30.04.2018 - 03.05.2018 in zona de E a platformei industriale Brazi



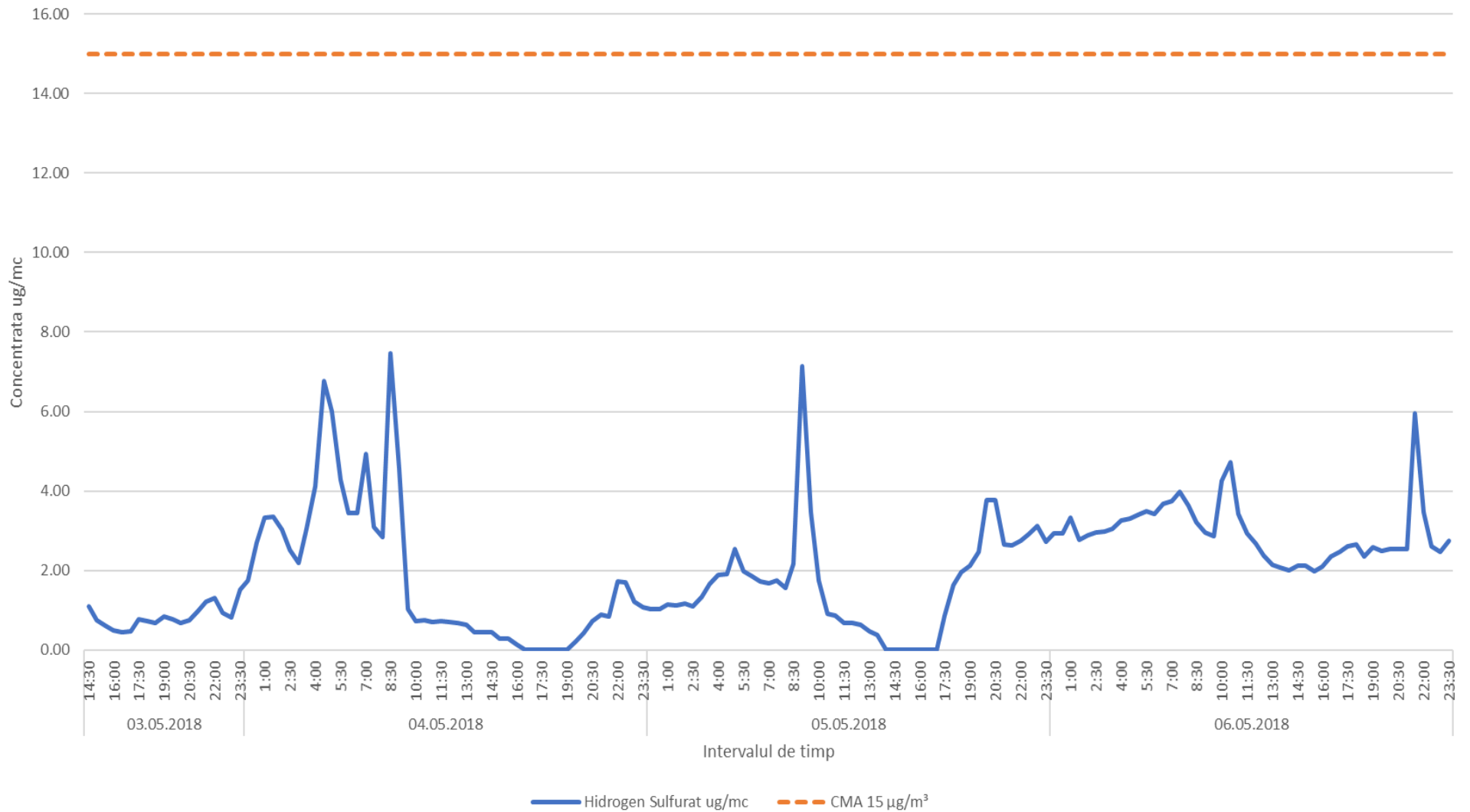
Variatia indicatorului NO2 in intervalul 30.04.2018 - 03.05.2018 in zona de E a platformei industriale Brazi



In data de 03.05.2018 laboratorul mobil a fost amplasat in zona de nord-vest a platformei industrial Brazi conform planului de monitorizare suplimentara al APM Prahova. Mai jos sunt prezentate rezultatele monitorizarii in perioada 03.05.2018-06.05.2018 precum si harta pozitionarii acestuia.

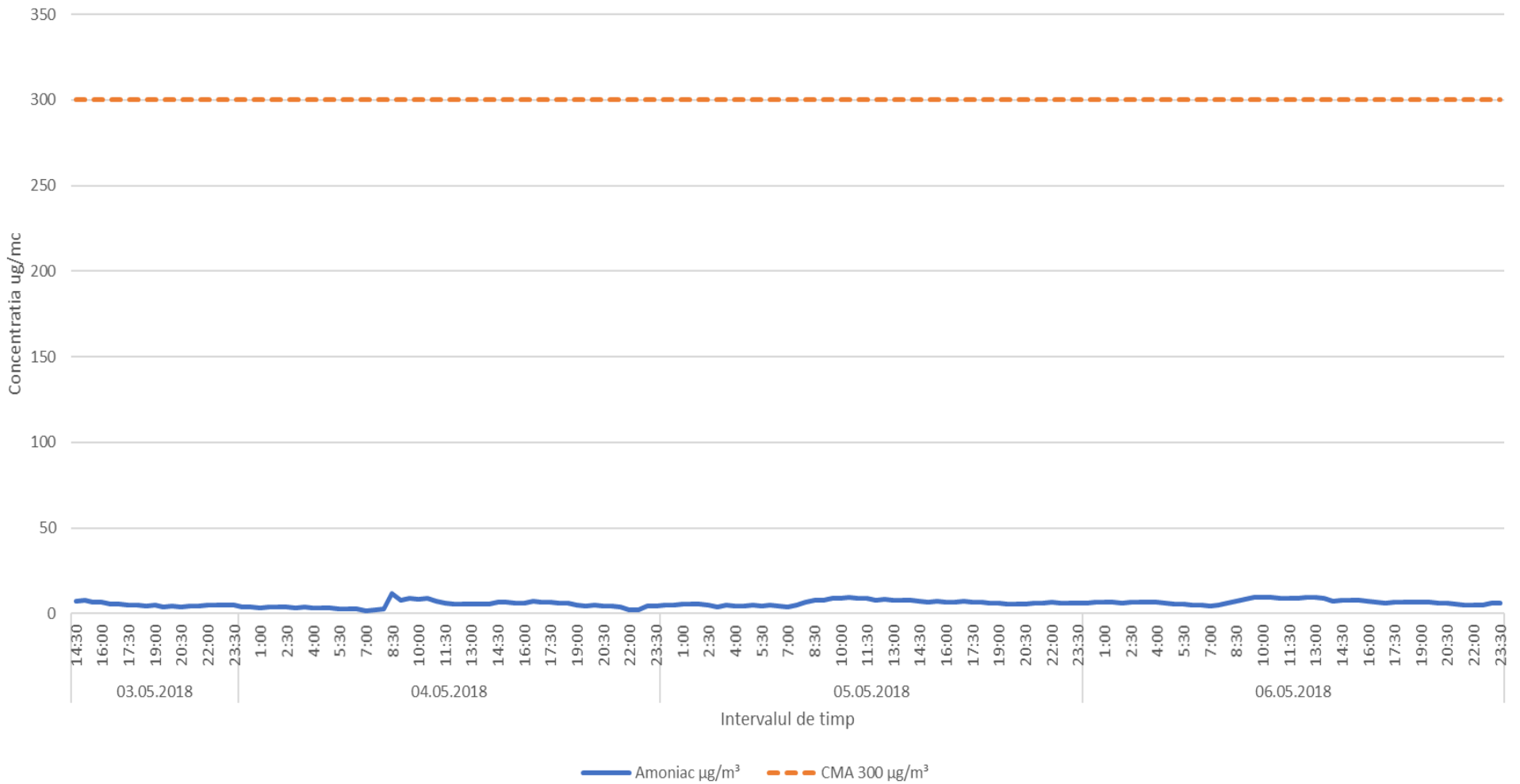


Variatia indicatorului H2S in intervalul 03.05.2018 - 06.05.2018 in zona de NV a platformei industriale Brazi

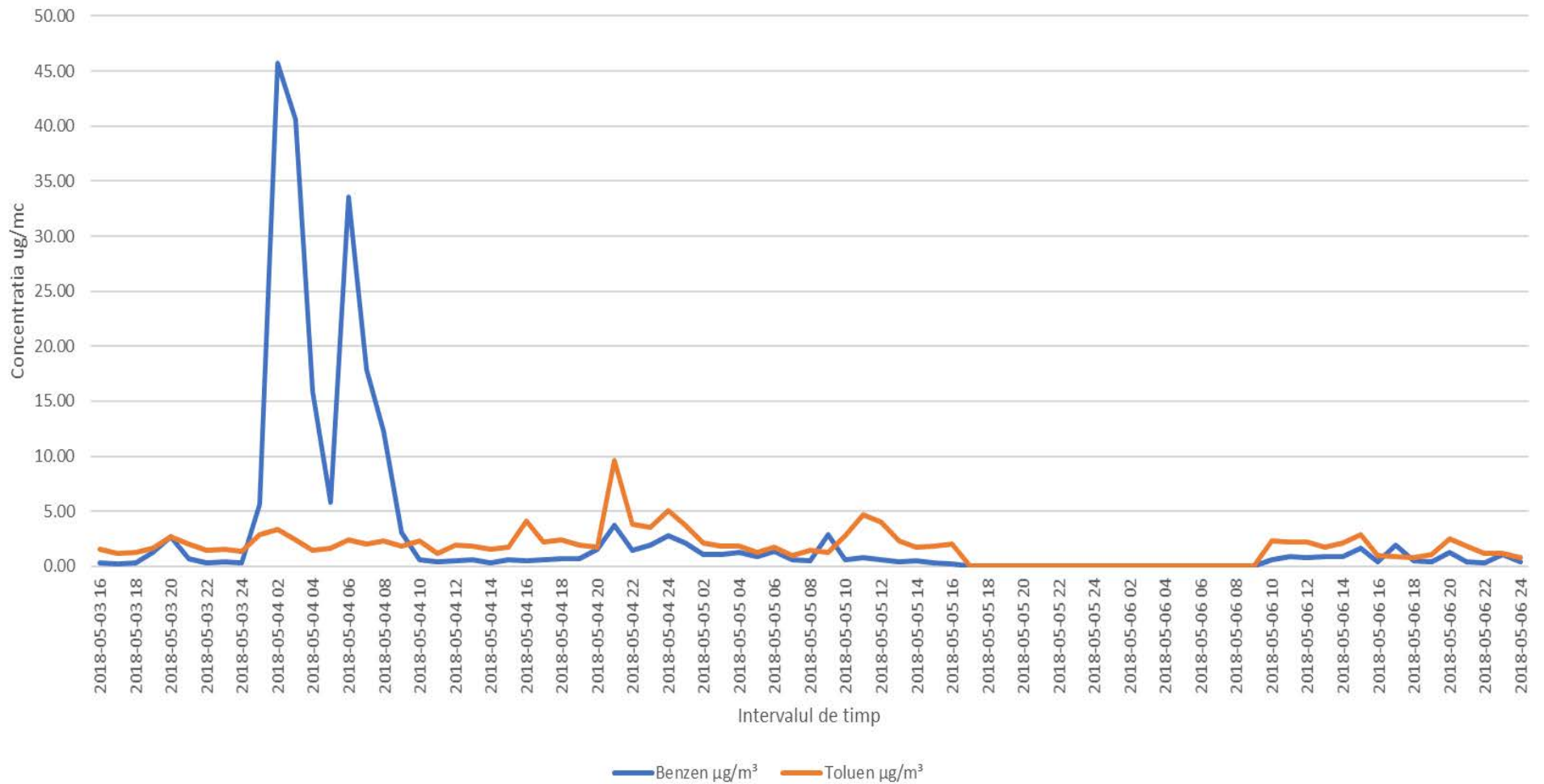




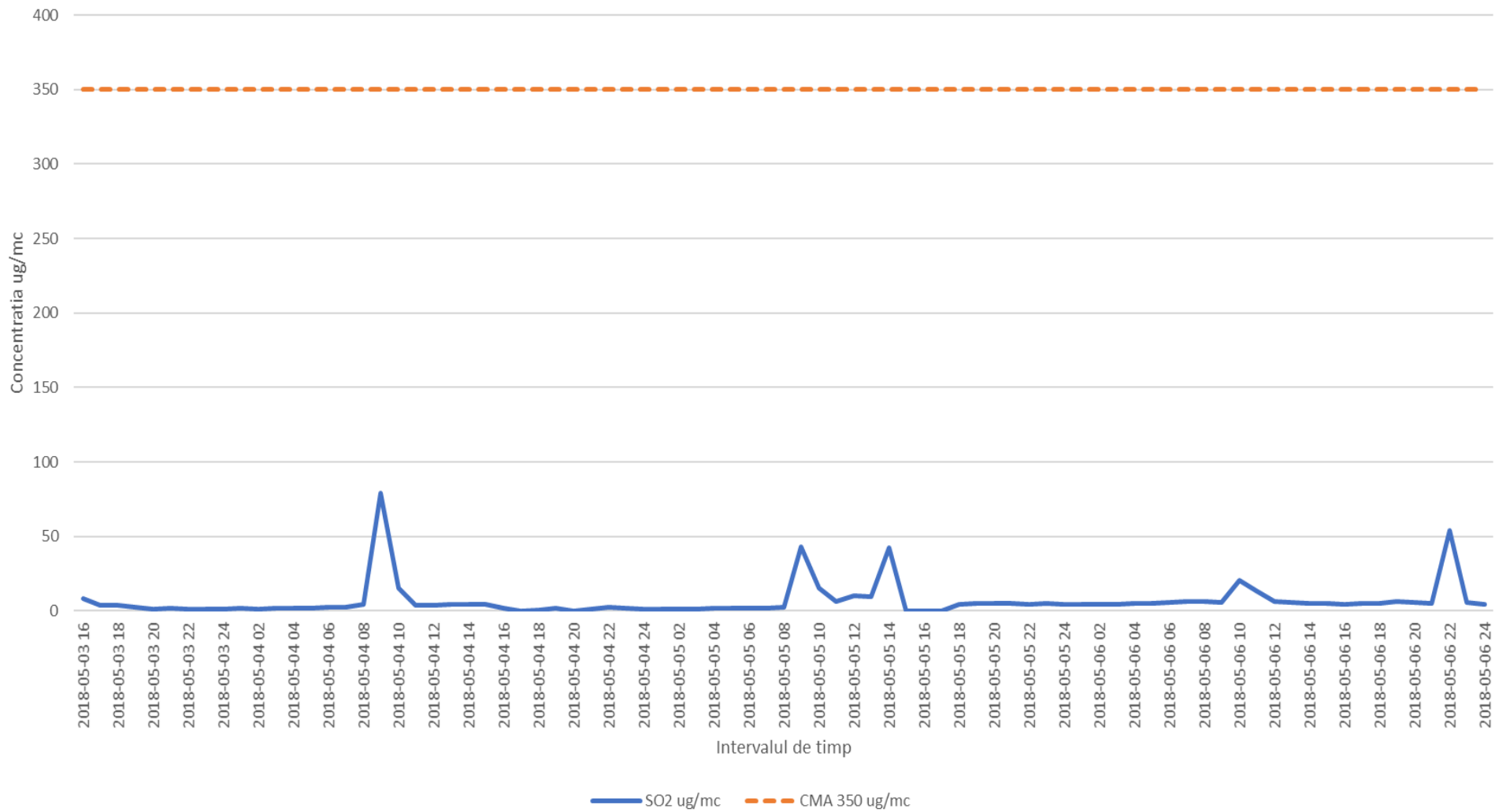
Variatia indicatorului NH3 in intervalul 03.05.2018 - 06.05.2018 in zona de NV a platformei industriale Brazi



Variatia indicatorilor C6H6, C7H8 in intervalul 03.05.2018 - 06.05.2018 in zona de NV a platformei industriale  
Brazi



Variatia indicatorului SO2 in intervalul 03.05.2018 - 06.05.2018 in zona de NV a platformei industriale Brazi



Variatia indicatorului NO2 in intervalul 03.05.2018 - 06.05.2018 in zona de NV a platformei industriale Brazi

