



Agenția pentru Protecția Mediului Prahova

ANEXA 10

Nr.12812/ 10.10.2016

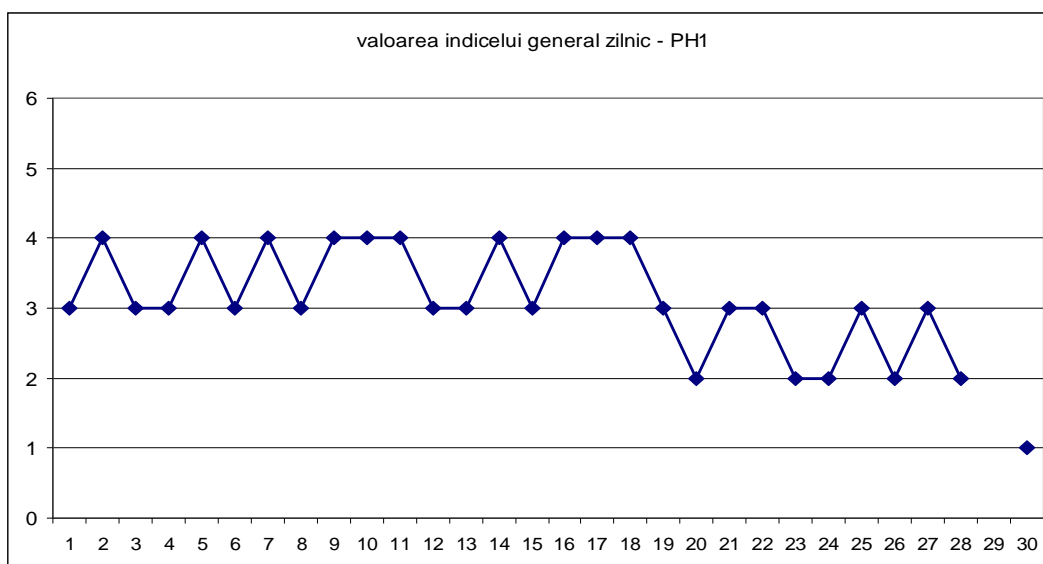
INFORMARE

Evolutia calitatii aerului in luna septembrie 2016

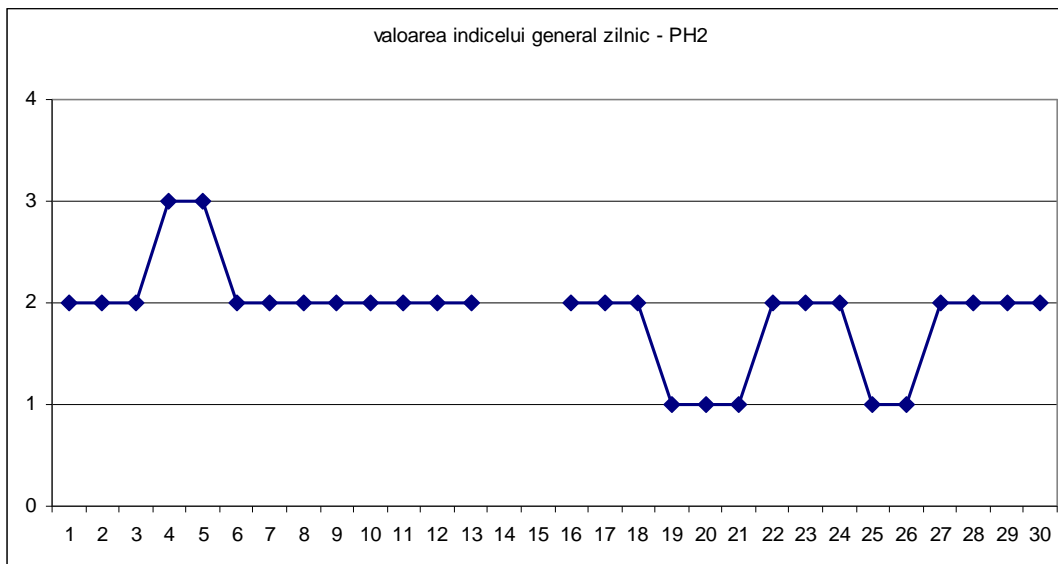
Prezentam mai jos evolutia indicelui general de calitatea aerului din rețeaua locala de monitorizare a calitatii aerului automata si manuala.

A. Evolutia indicelui general de calitate a aerului din rețeaua locala de monitorizare:

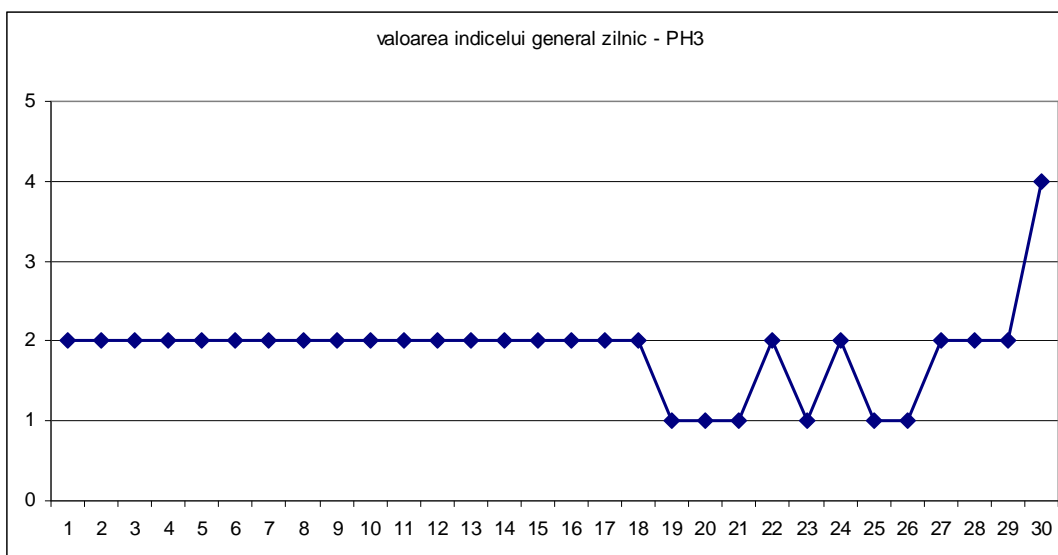
Statia PH1- str Ghe.Gr. Cantacuzino



Statia PH2 - p-ta Victoriei



Statia PH3 -Blejoi, primarie

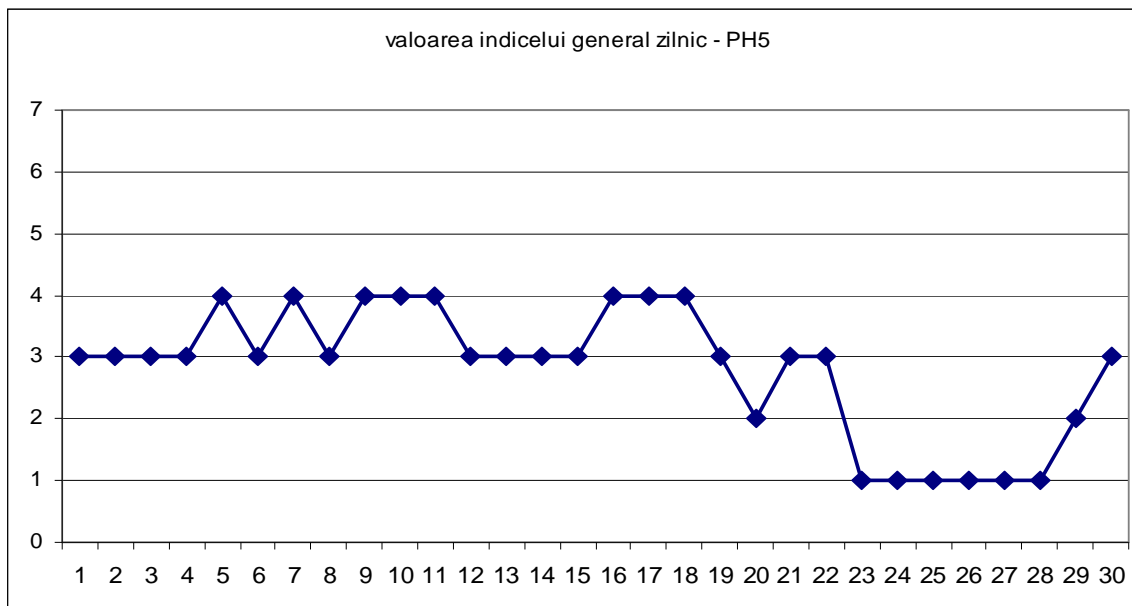


Statia PH4 - Brazi, primarie

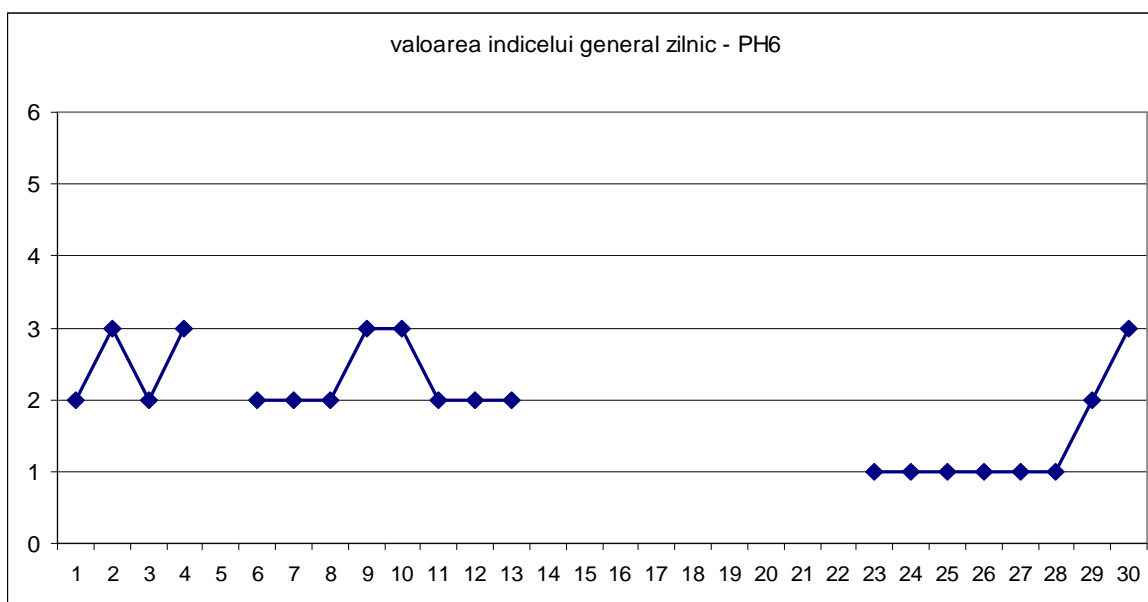
Pentru statia automata de monitorizare a calitatii aerului PH4, datorita unor probleme tehnice, nu a putut fi realizat graficul indicelui general de calitate al aerului.



Statia PH 5 – B-dul Bucuresti



Statia PH 6- Mihai Bravu

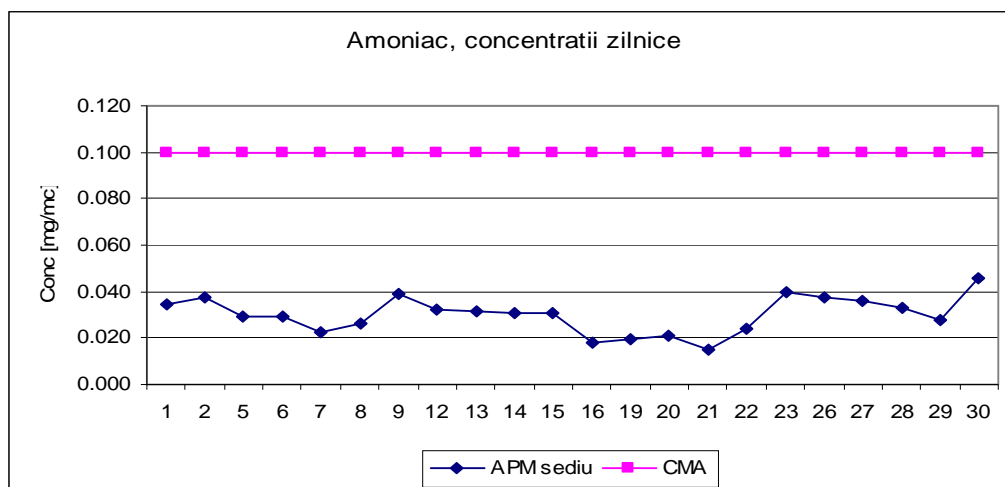


Datele sunt furnizate de statiile automate din Reteaua Nationala de Monitorizare a Calitatii Aerului.

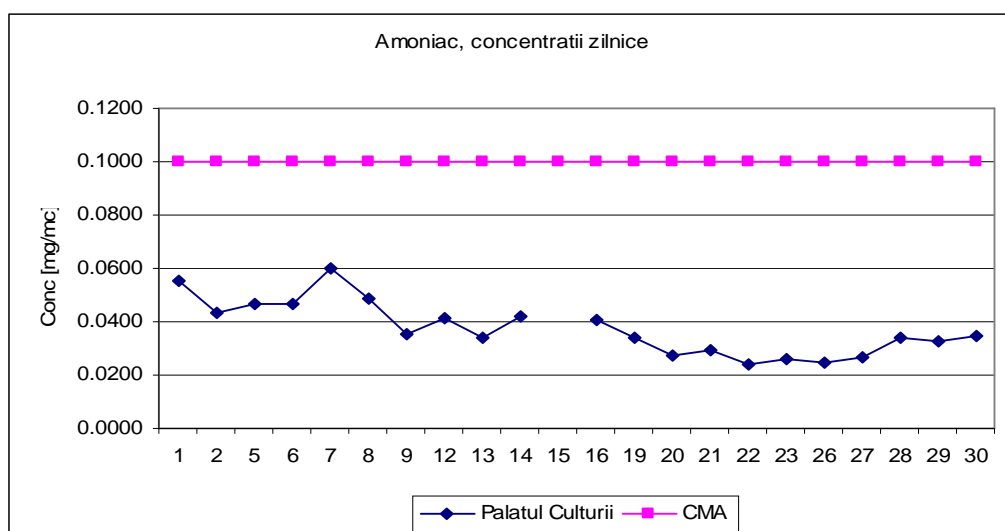


B. Variatia concentratiilor medii zilnice pentru indicatorii specifici –statii manuale de monitorizare

Punct de prelevare APM sediu, poluant masurat amoniac, adresa str Ghe Gr Cantacuzino

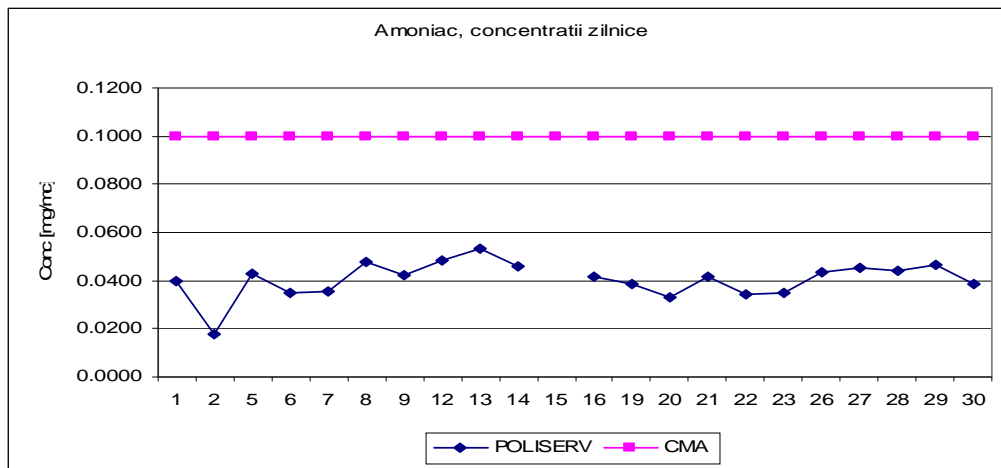


Punct de prelevare Palatul Culturii, poluant masurat amoniac, adresa b-dul Republicii

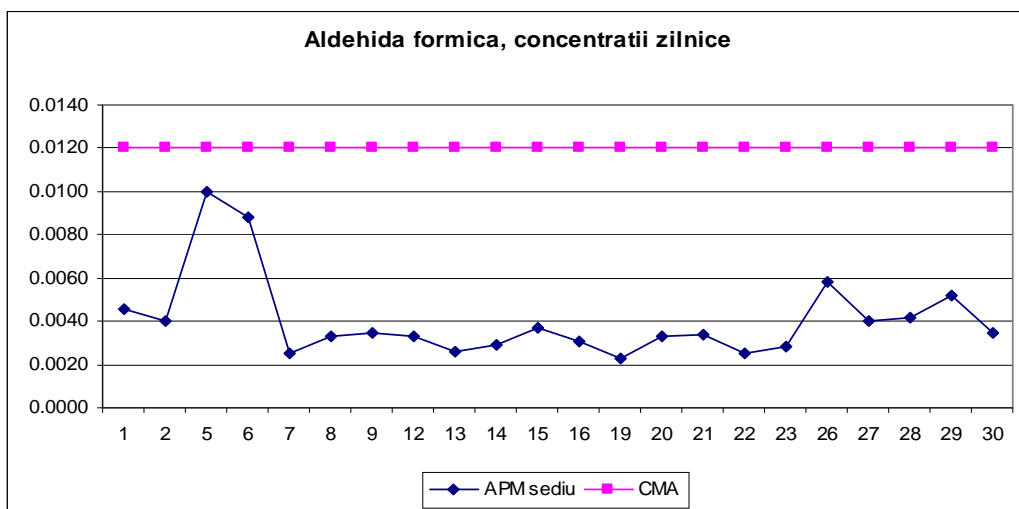


Punct de prelevare POLISERV , poluant masurat amoniac, adresa str Strandului

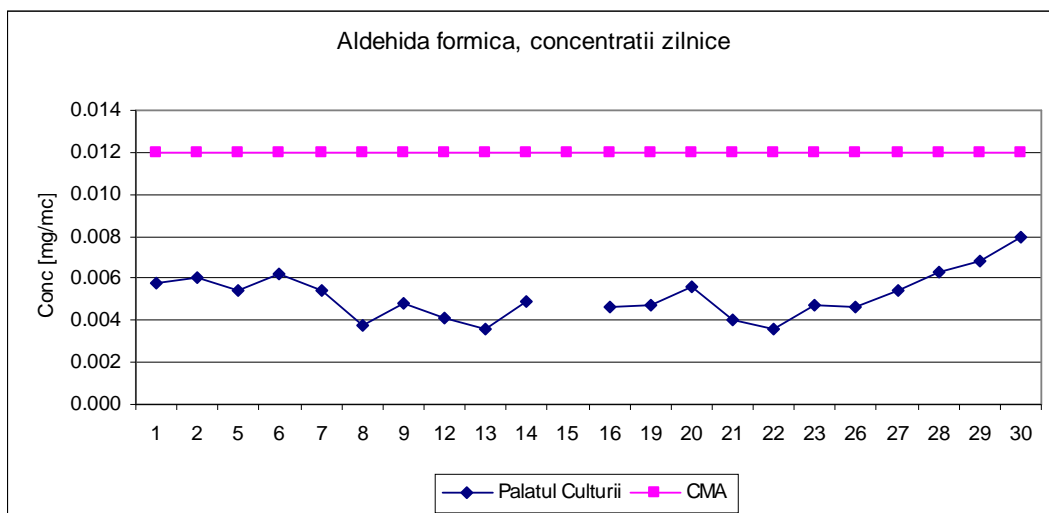




Punct de prelevare APM sediu, poluant masurat aldehida formica, adresa str Ghe Gr Cantacuzino

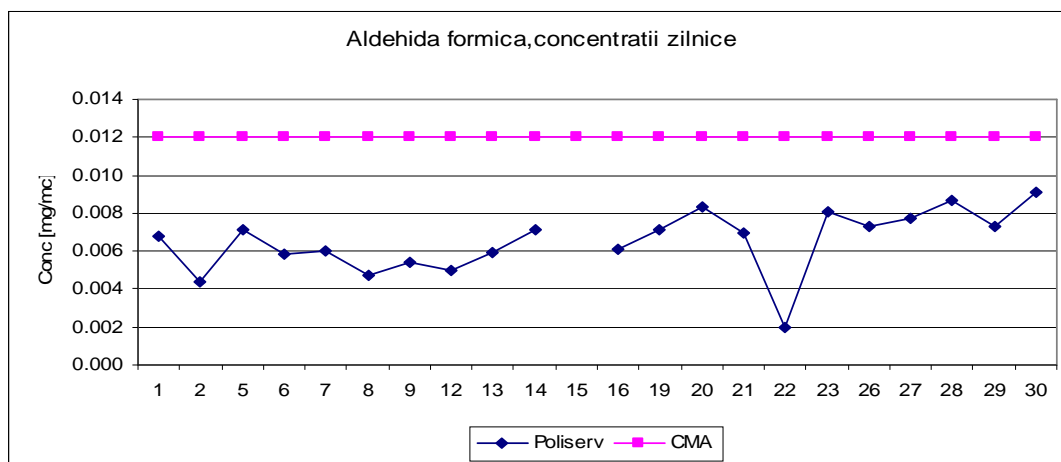


Punct de prelevare Palatul Culturii, poluant masurat aldehida formica, adresa b-dul Republicii

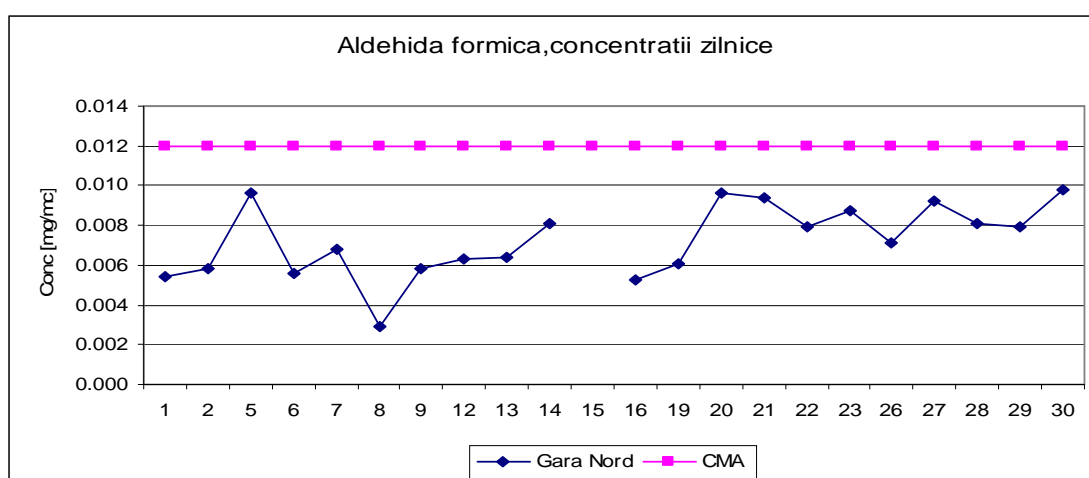


Punct de prelevare POLISERV , poluant masurat aldehida formica, adresa str Strandului

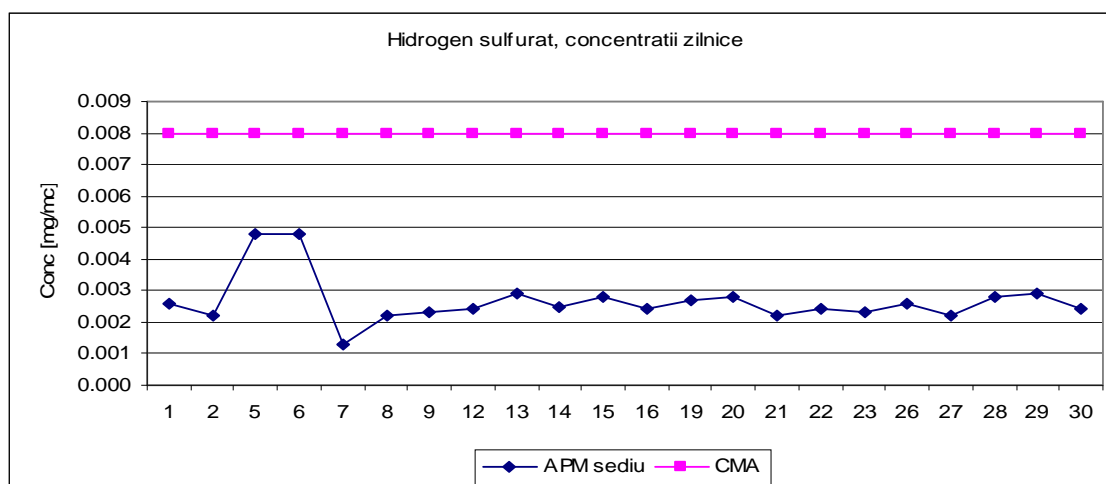




Punct de prelevare Gara Nord , poluant masurat aldehida formica, adresa str Dragalina

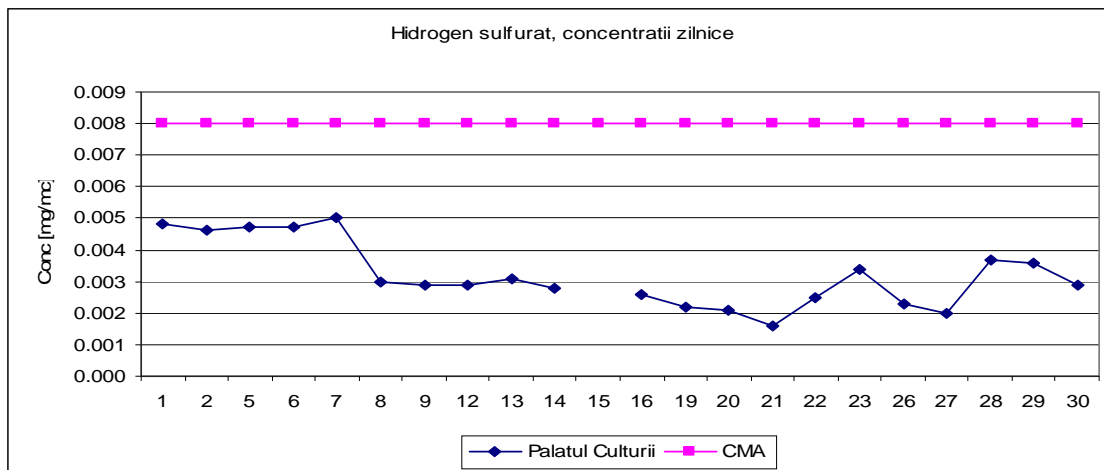


Punct de prelevare APM sediu, poluant masurat hidrogen sulfurat, adresa str Ghe Gr Cantacuzino

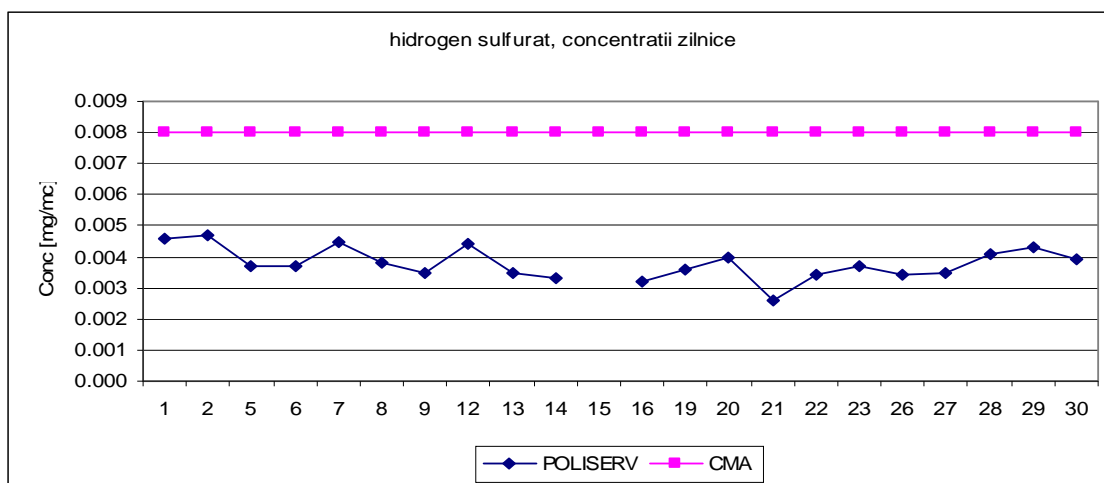


Punct de prelevare Palatul Culturii, poluant masurat hidrogen sulfurat, adresa b-dul Republicii

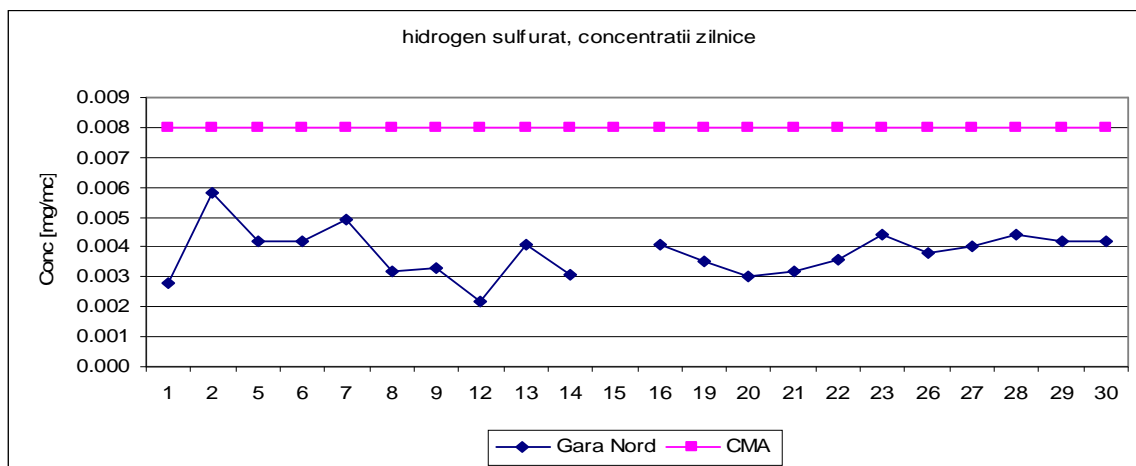




Punct de prelevare POLISERV , poluant masurat hidrogen sulfurat, adresa str Strandului

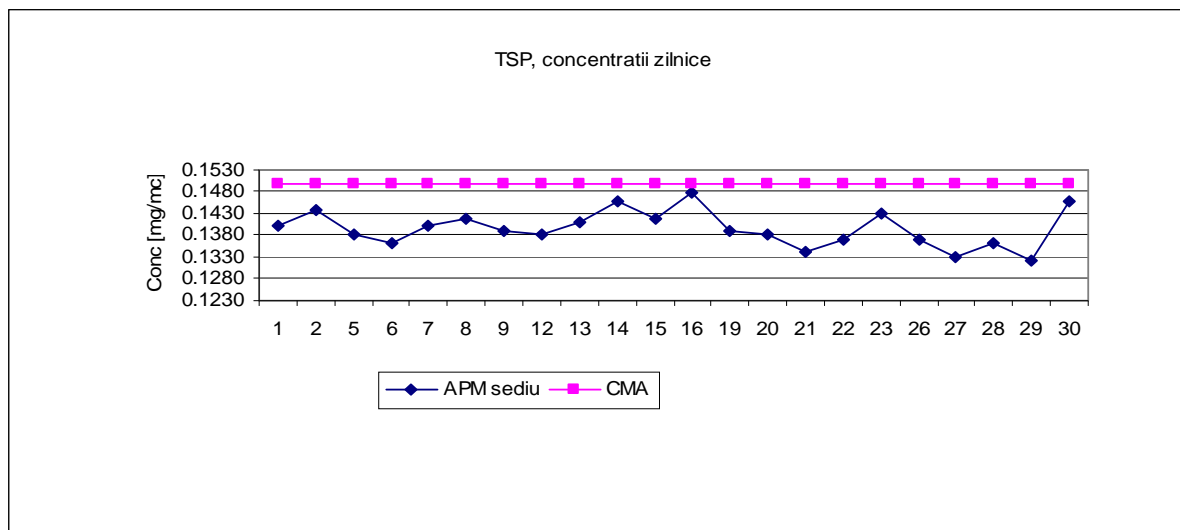


Punct de prelevare Gara Nord , poluant masurat hidrogen sulfurat, adresa str Dragalina



Punct de prelevare APM sediu, poluant masurat TSP, adresa str Ghe Gr Cantacuzino





Datele sunt furnizate in urma prelevarii manuale si determinarilor chimice efectuate in laboratorul APM Prahova.

Sef serviciu Monitorizare si Laboratoare,

Ing. Mateescu Cornelia

Contact APM Prahova

Nume/prenume: Mateescu Cornelia (conform Anexei 6, din OM 546/2008)

Adresa de e-mail: office@apmph.anpm.ro Telefon: 0244-544134

