



---

**Agenția pentru Protecția Mediului Prahova**

---

ANEXA 10

Nr.13949/ 10.11.2016

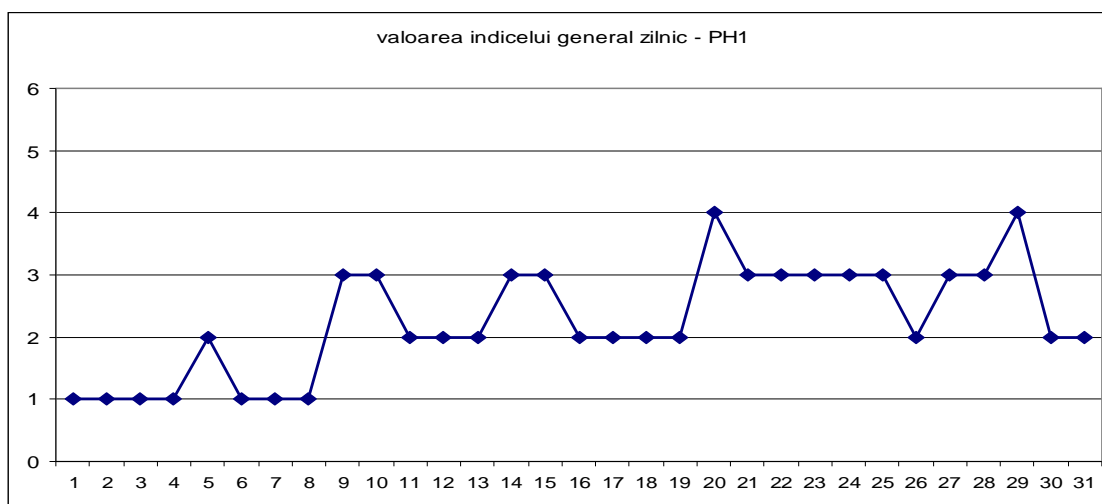
INFORMARE

Evoluția calitatii aerului în luna octombrie 2016

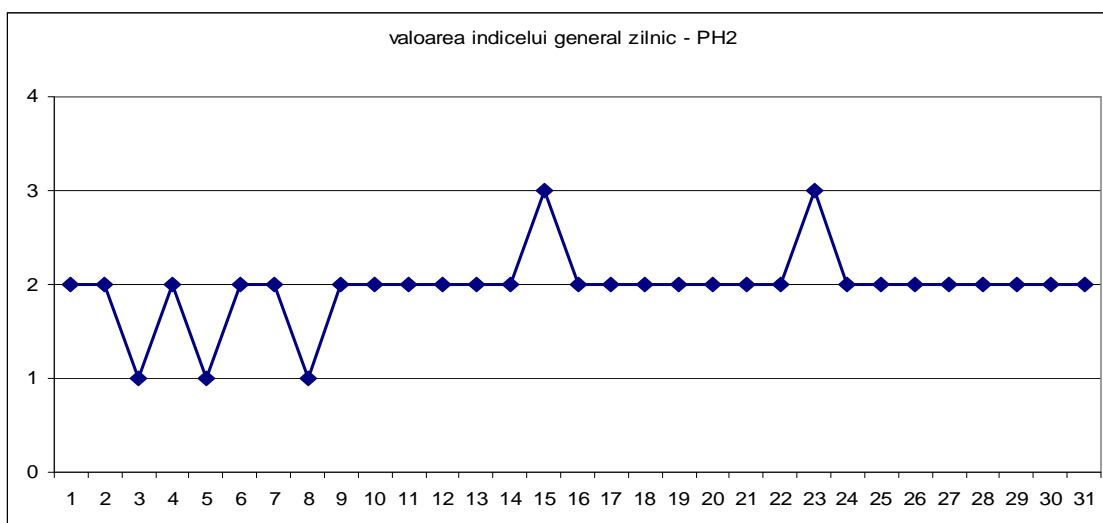
Prezentăm mai jos evoluția indicelui general de calitate a aerului din rețeaua locală de monitorizare a calitatii aerului automată și manuală.

A. Evoluția indicelui general de calitate a aerului din rețeaua locală de monitorizare:

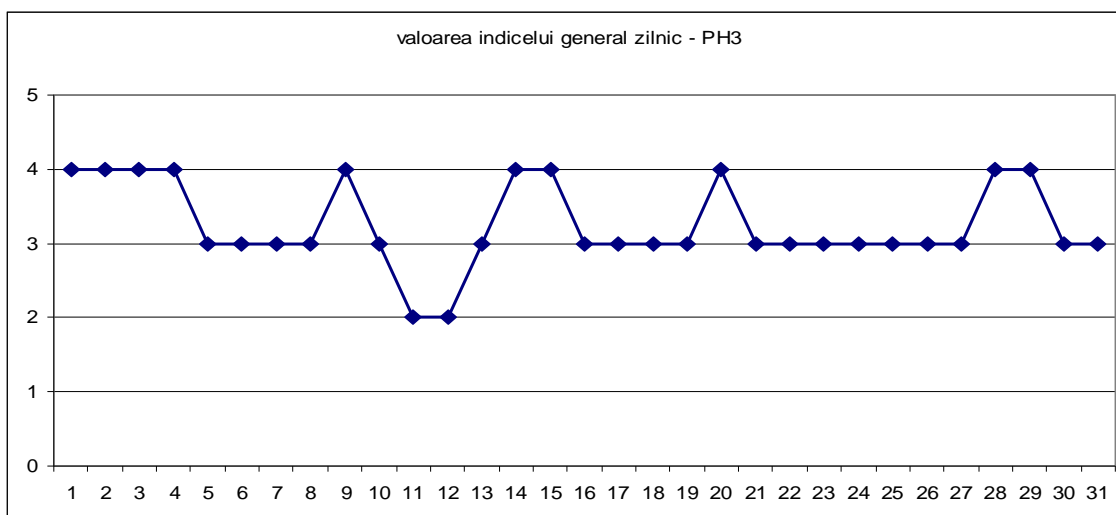
Stația PH1- str Ghe.Gr. Cantacuzino



### Statia PH2 - p-ta Victoriei

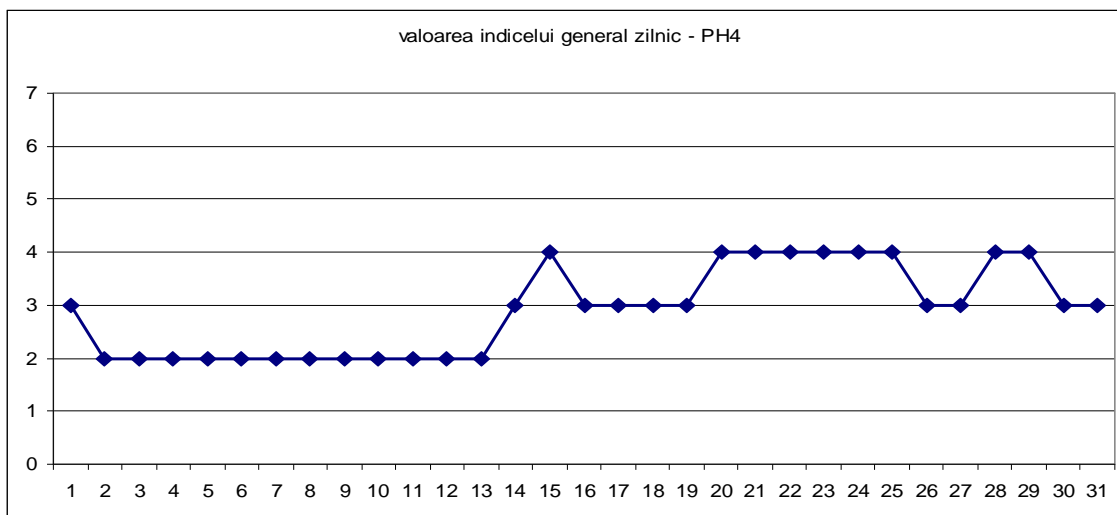


### Statia PH3 -Blejoi, primarie

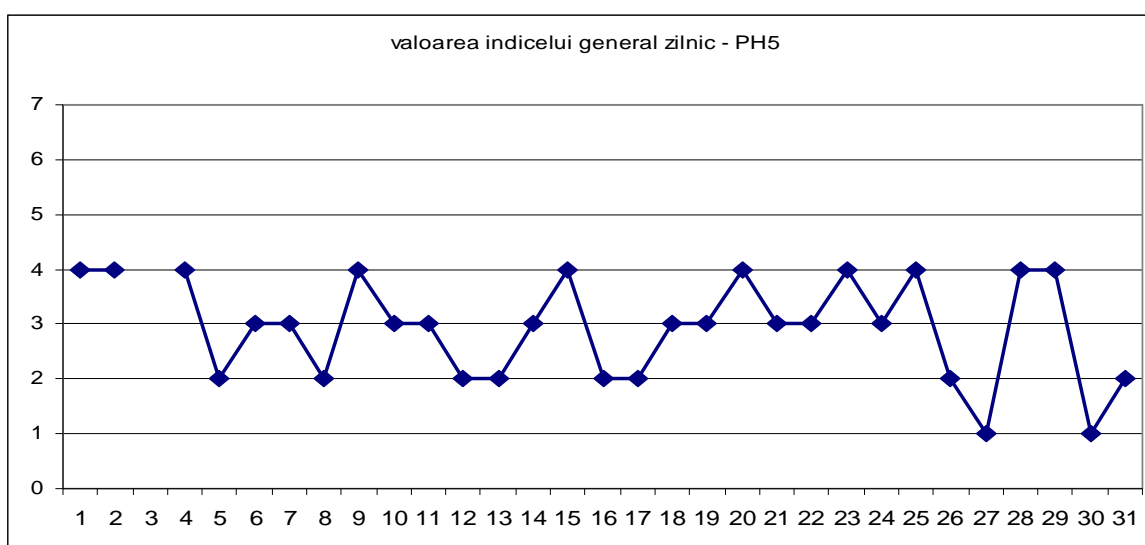


### Statia PH4 - Brazi, primarie

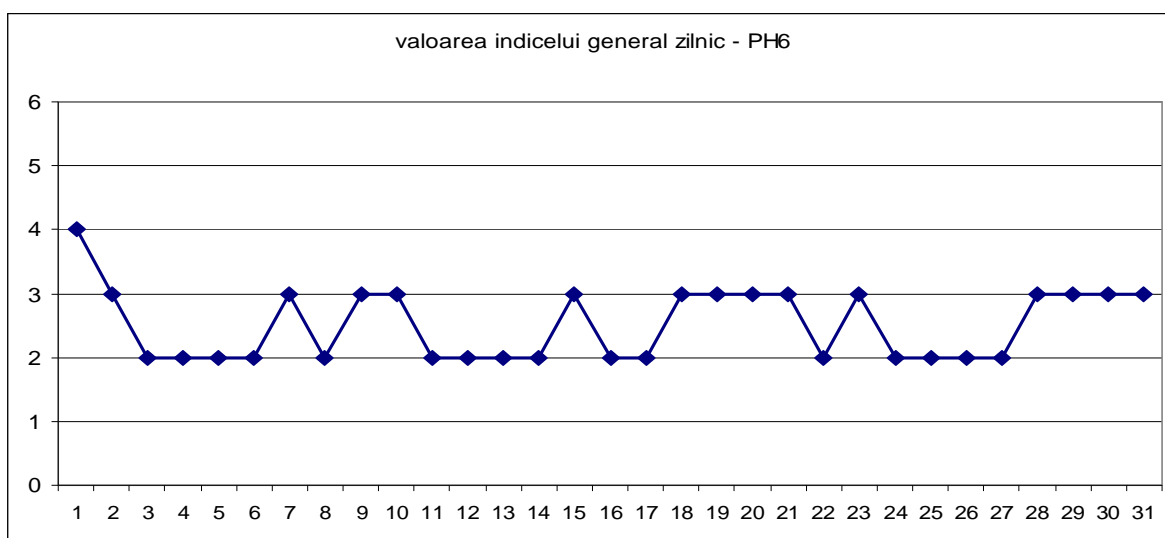




### Statia PH 5 – B-dul Bucuresti



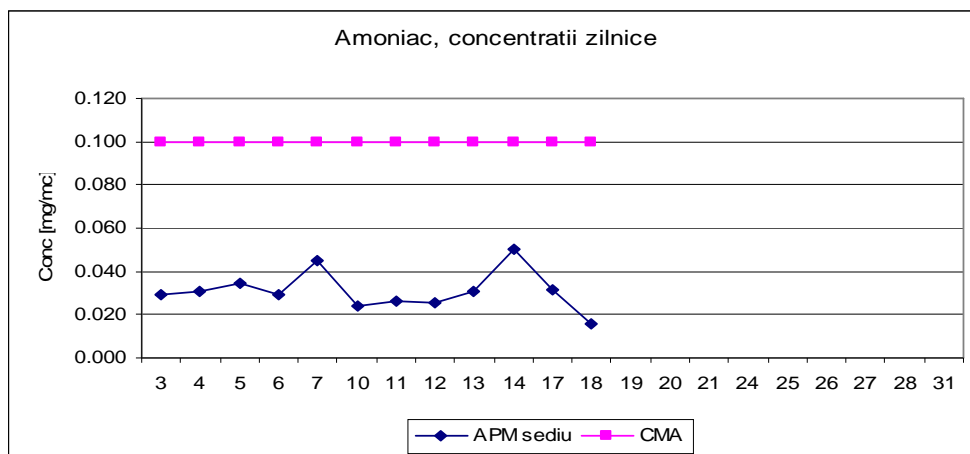
### Statia PH 6- Mihai Bravu



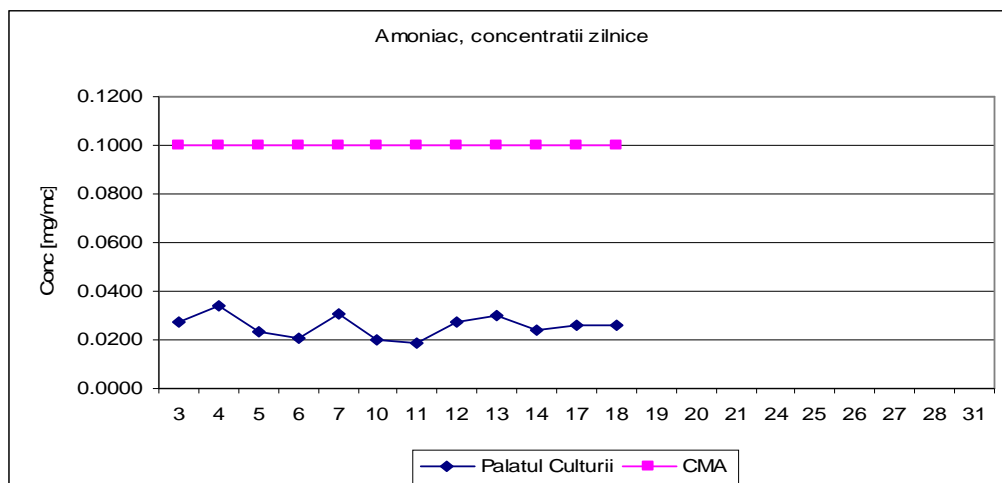
Datele sunt furnizate de statiile automate din Reteaua Nationala de Monitorizare a Calitatii Aerului.

B. Variatia concentratiilor medii zilnice pentru indicatorii specifici –statii manuale de monitorizare

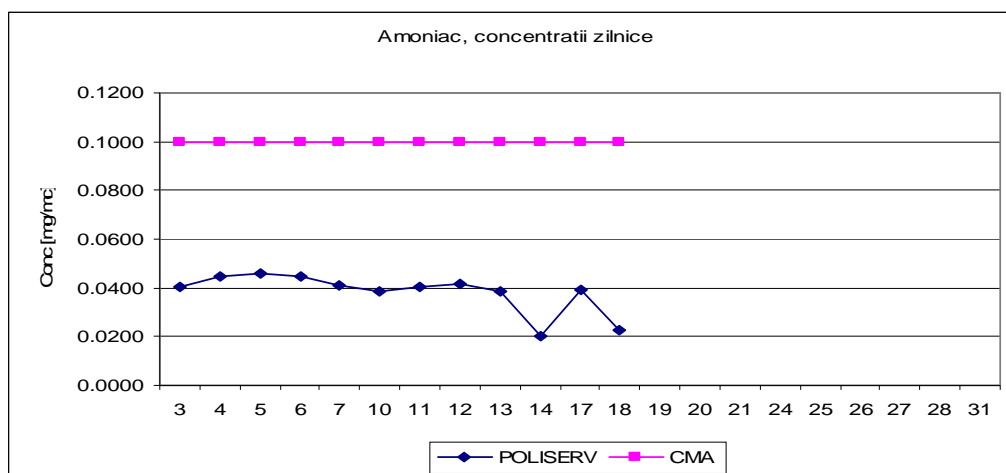
Punct de prelevare APM sediu, poluant masurat amoniac, adresa str Ghe Gr Cantacuzino



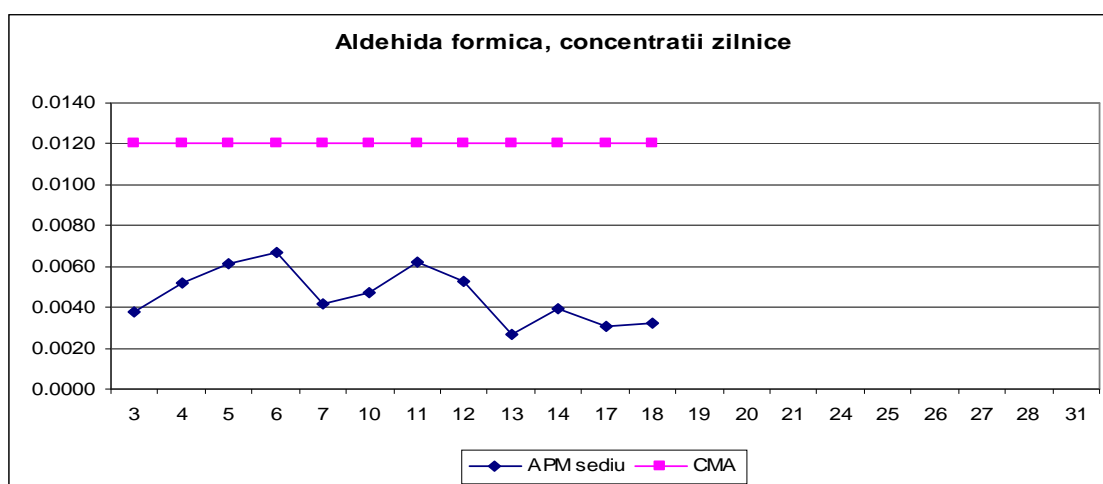
Punct de prelevare Palatul Culturii, poluant masurat amoniac, adresa b-dul Republicii



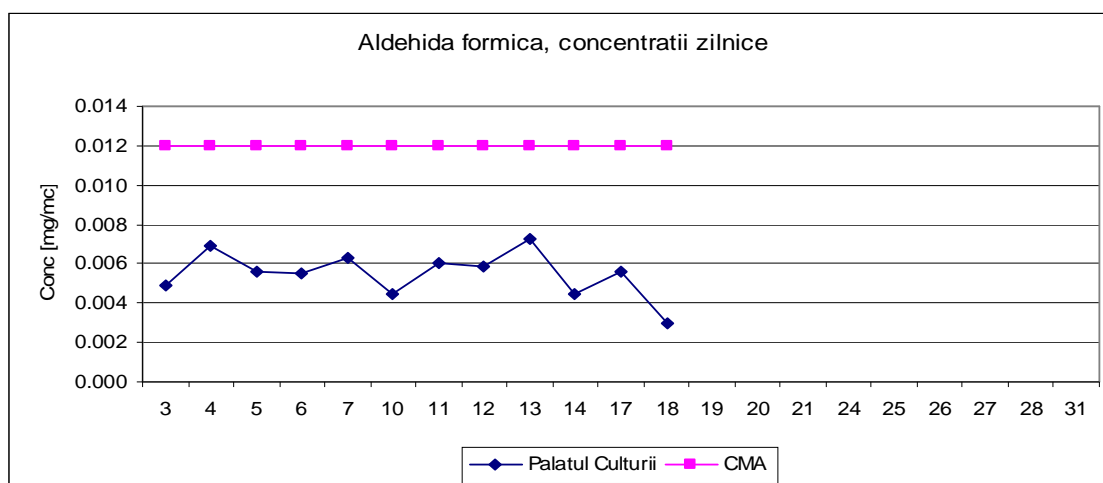
Punct de prelevare POLISERV , poluant masurat amoniac, adresa str Strandului



Punct de prelevare APM sediu, poluant masurat aldehida formica, adresa str Ghe Gr Cantacuzino

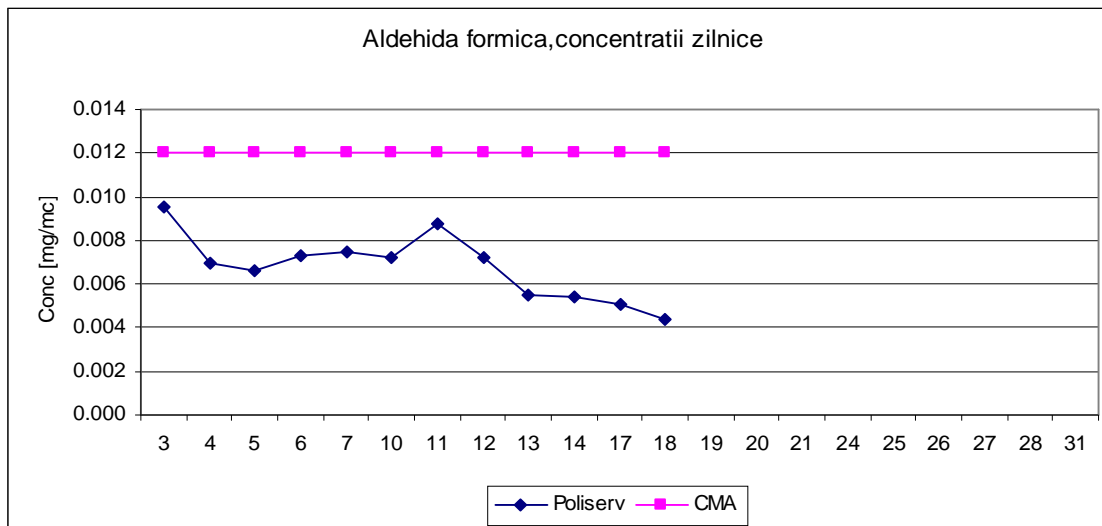


Punct de prelevare Palatul Culturii, poluant masurat aldehida formica, adresa b-dul Republicii

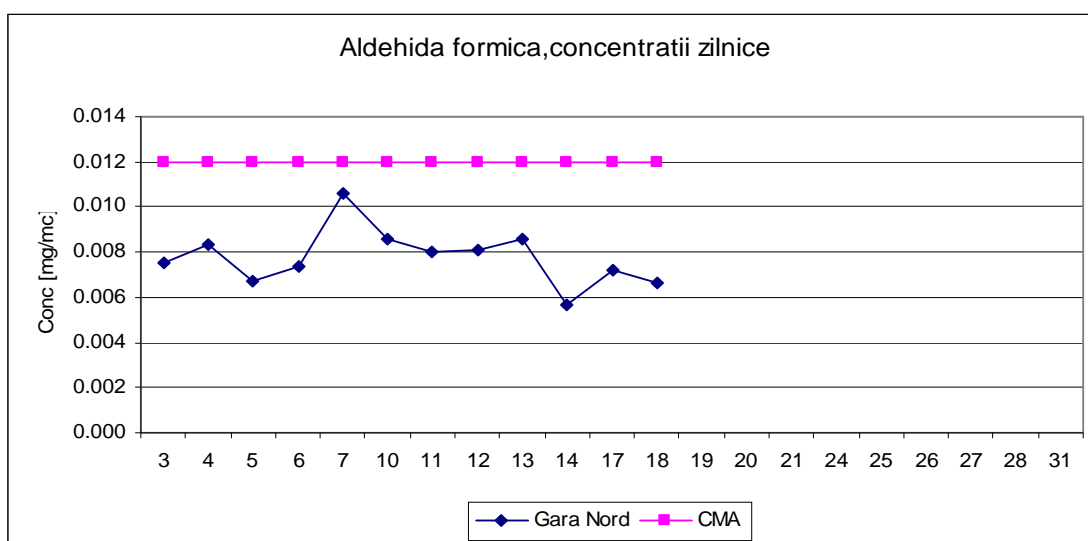


Punct de prelevare POLISERV , poluant masurat aldehida formica, adresa str Strandului

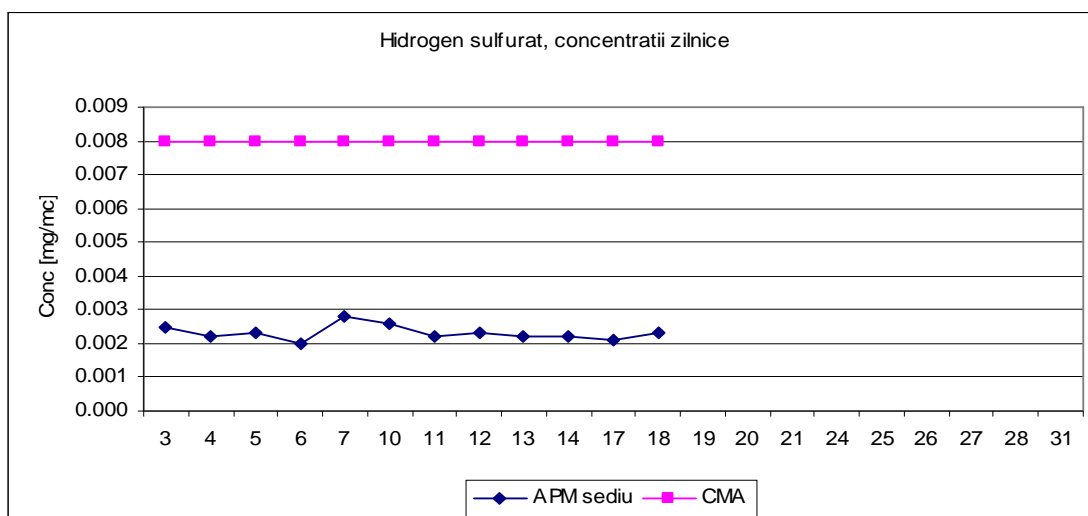




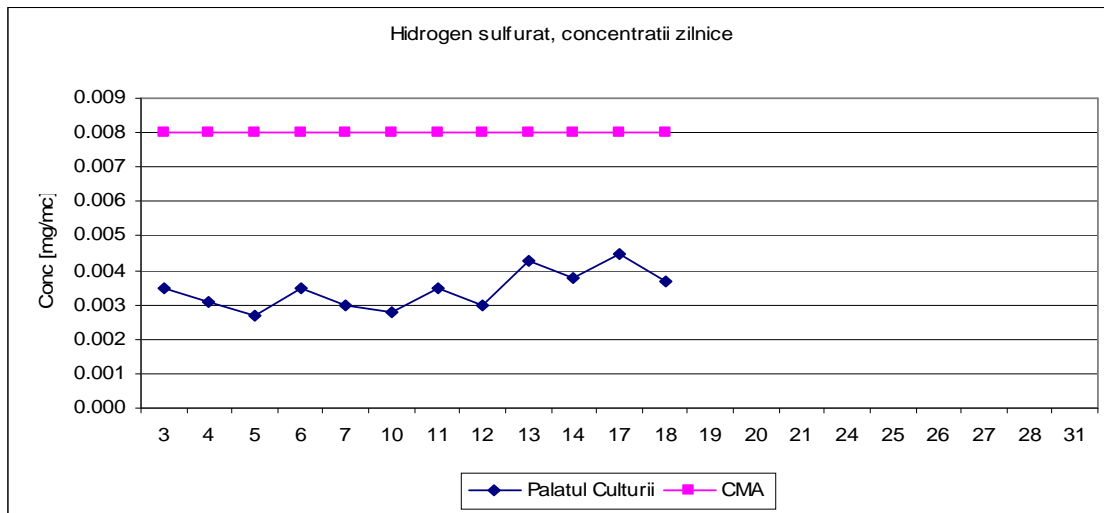
Punct de prelevare Gara Nord , poluant masurat aldehida formica, adresa str Dragalina



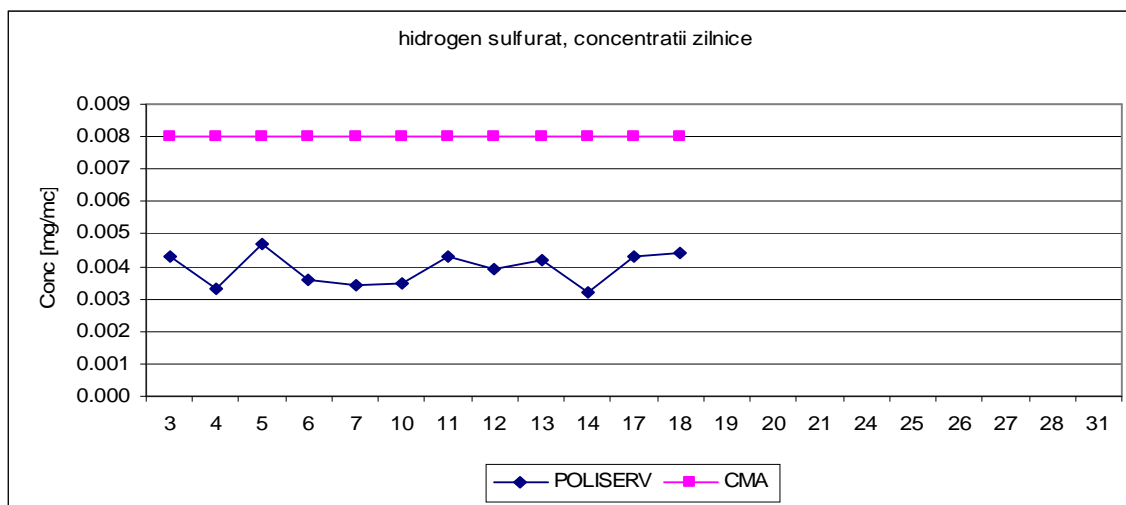
Punct de prelevare APM sediu, poluant masurat hidrogen sulfurat, adresa str Ghe Gr Cantacuzino



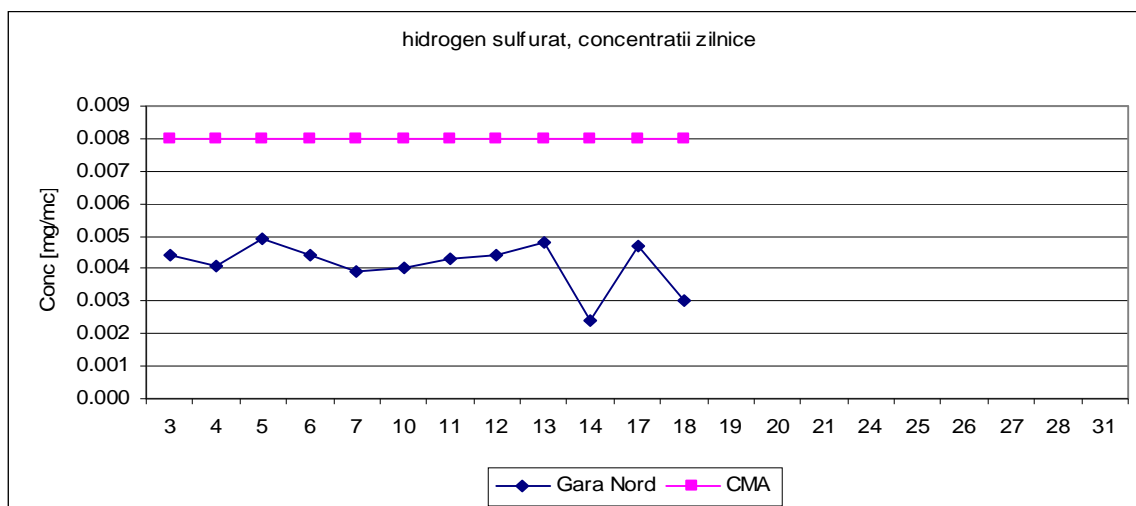
Punct de prelevare Palatul Culturii, poluant masurat hidrogen sulfurat, adresa b-dul Republicii



Punct de prelevare POLISERV , poluant masurat hidrogen sulfurat, adresa str Strandului

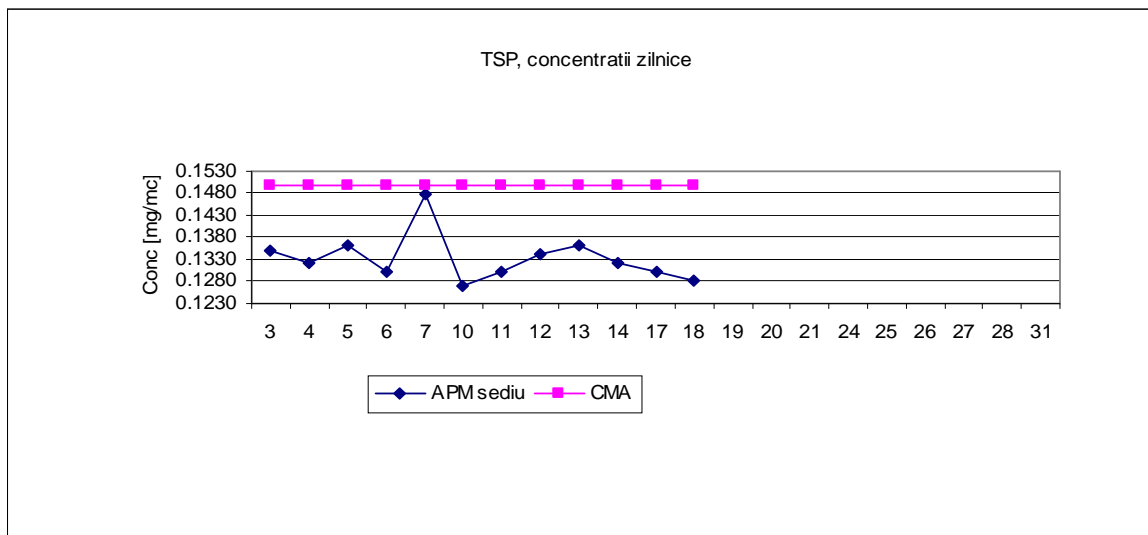


Punct de prelevare Gara Nord , poluant masurat hidrogen sulfurat, adresa str Dragalina



Punct de prelevare APM sediu, poluant masurat TSP, adresa str Ghe Gr Cantacuzino





Incepand cu data de 19.10.2016, aparatele de monitorizare manuala au fost imprumutate la ANPM Bucuresti pentru monitorizare (la punerea lor in functiune, se vor reconsidera punctele de amplasare a statiilor in urma analizelor primite de la DSP).

Datele sunt furnizate in urma prelevarii manuale si determinarilor chimice efectuate in laboratorul APM Prahova.

Sef serviciu Monitorizare si Laboratoare,

Ing. Mateescu Cornelia





Contact APM Prahova

Nume/prenume: Mateescu Cornelia (*conform Anexei 6, din OM 546/2008*)

Adresă de e-mail: [office@apmph.anpm.ro](mailto:office@apmph.anpm.ro) Telefon: 0244-544134



---

**AGENȚIA PENTRU PROTECȚIA MEDIULUI PRAHOVA**

Str. Gh.Gr.Cantacuzino, nr.306, Ploiești, Cod 100466

E-mail: [office@apmph.anpm.ro](mailto:office@apmph.anpm.ro); Tel. 0244 544134; Fax. 0244 515811