



Agenția pentru Protecția Mediului Prahova

ANEXA 10

Nr.5152/ 11.04.2016

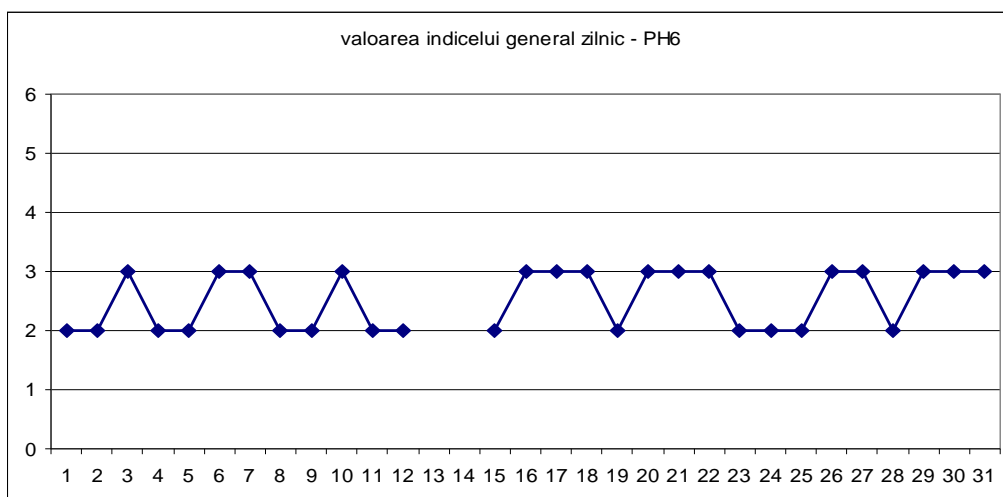
INFORMARE

Evolutia calitatii aerului in luna martie 2016

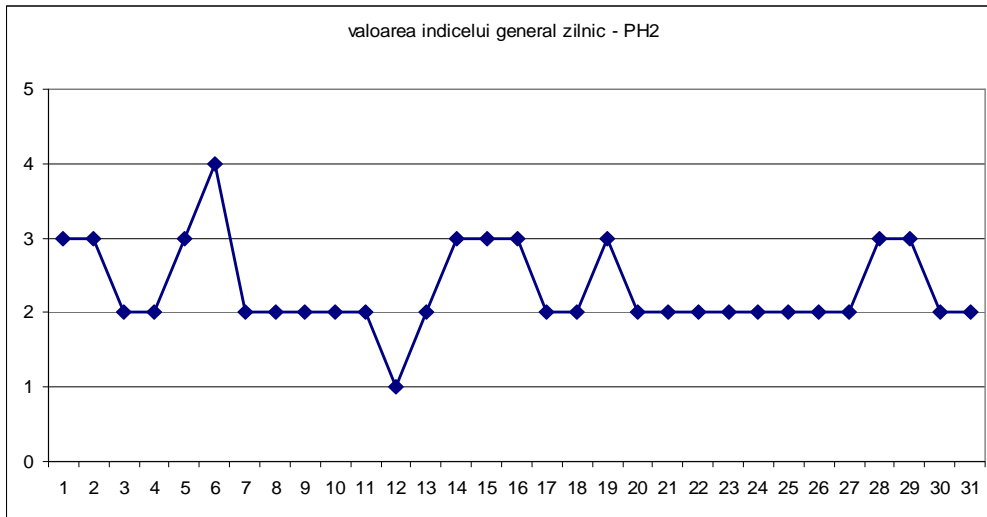
Prezentam mai jos evolutia indicelui general de calitatea aerului din rețeaua locala de monitorizare a calitatii aerului automata si manuala.

A. Evolutia indicelui general de calitate a aerului din rețeaua locala de monitorizare:

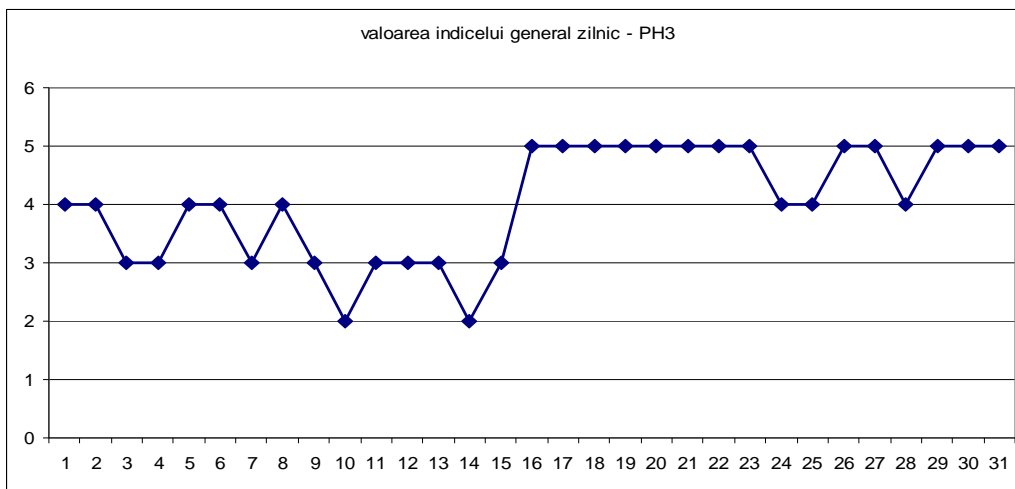
Statia PH1- str Ghe.Gr. Cantacuzino



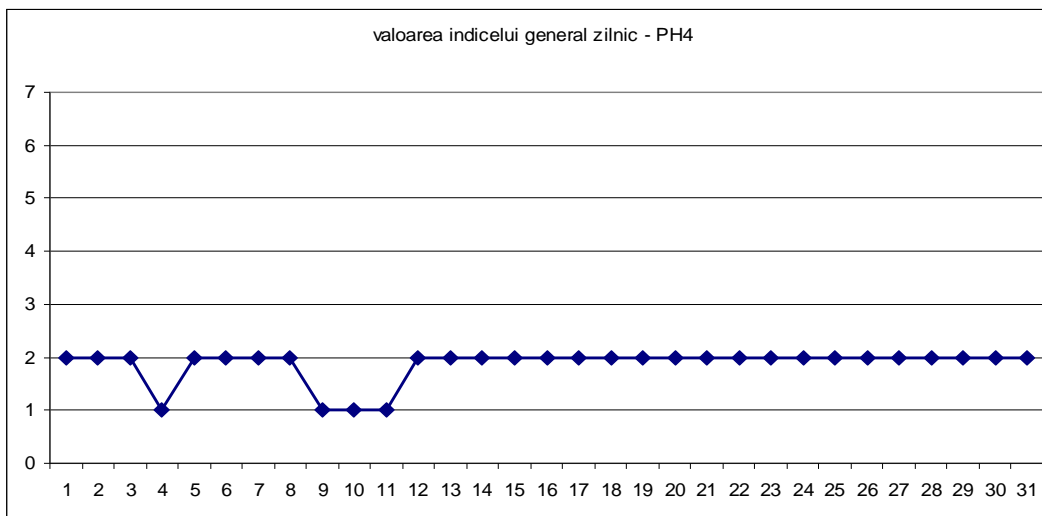
Statia PH2 - p-ta Victoriei



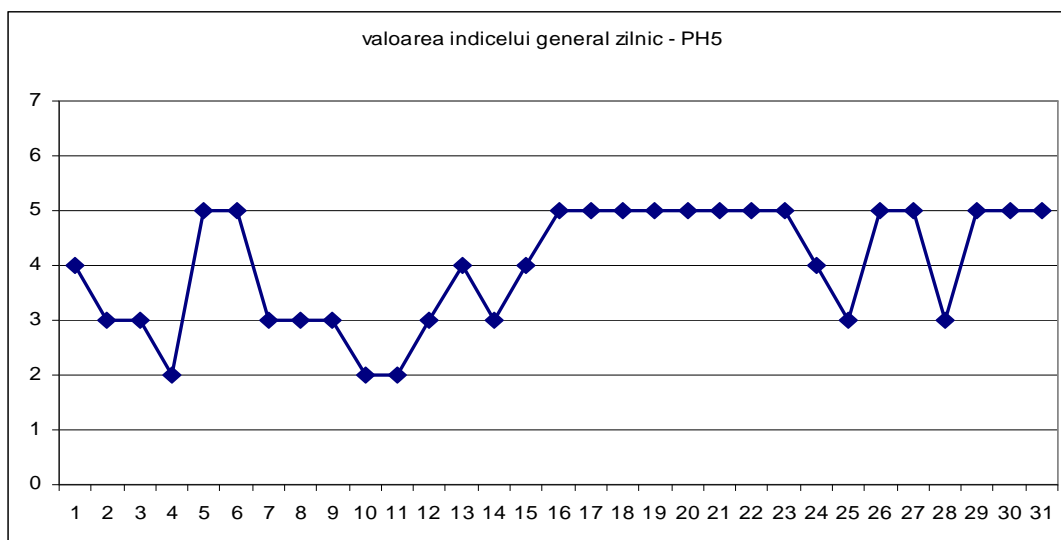
Statia PH3 -Blejoi, primarie



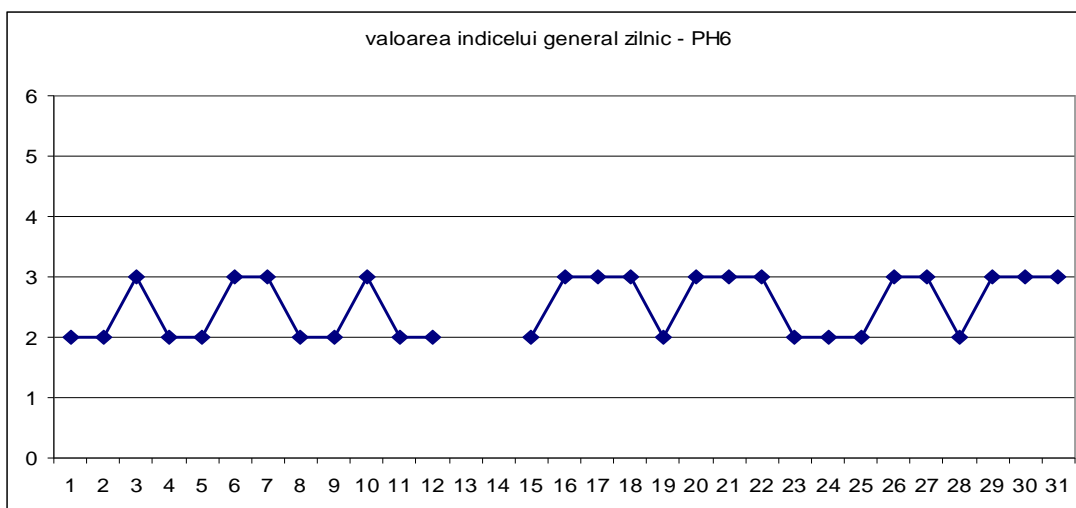
Statia PH4 - Brazi, primarie



Statia PH 5 – B-dul Bucuresti



Statia PH 6- Mihai Bravu

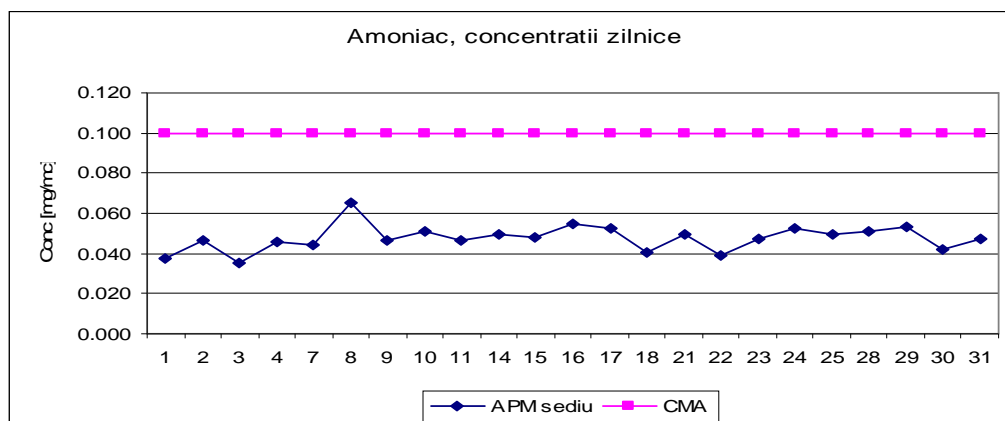


Datele sunt furnizate de statiile automate din Reteaua nationala de Monitorizare a Calitatii Aerului.

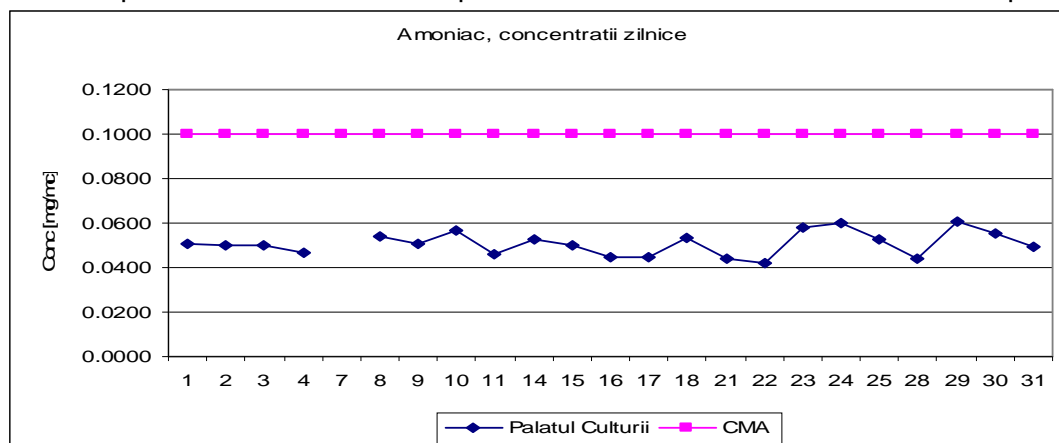


B. Variatia concentratiilor medii zilnice pentru indicatorii specifici –statii manuale de monitorizare

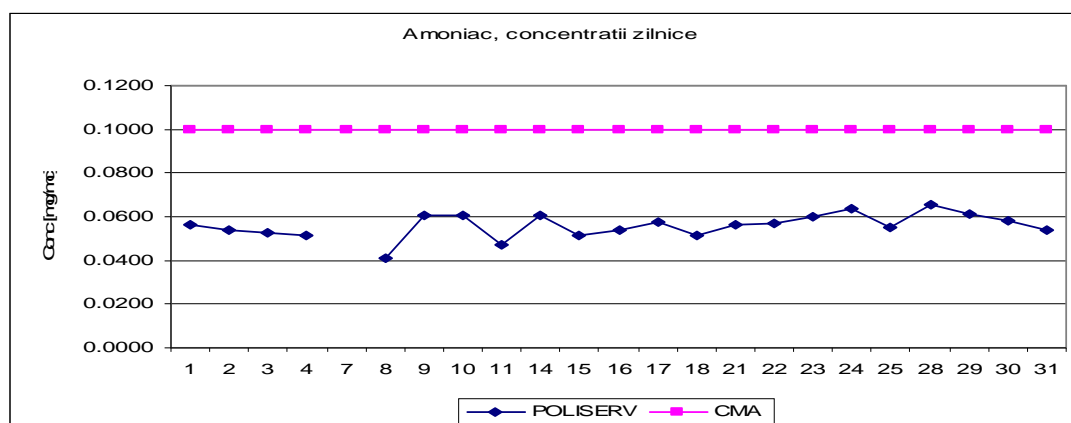
Punct de prelevare APM sediu, poluant masurat amoniac, adresa str Ghe Gr Cantacuzino



Punct de prelevare Palatul Culturii, poluant masurat amoniac, adresa b-dul Republicii



Punct de prelevare POLISERV , poluant masurat amoniac, adresa str Strandului



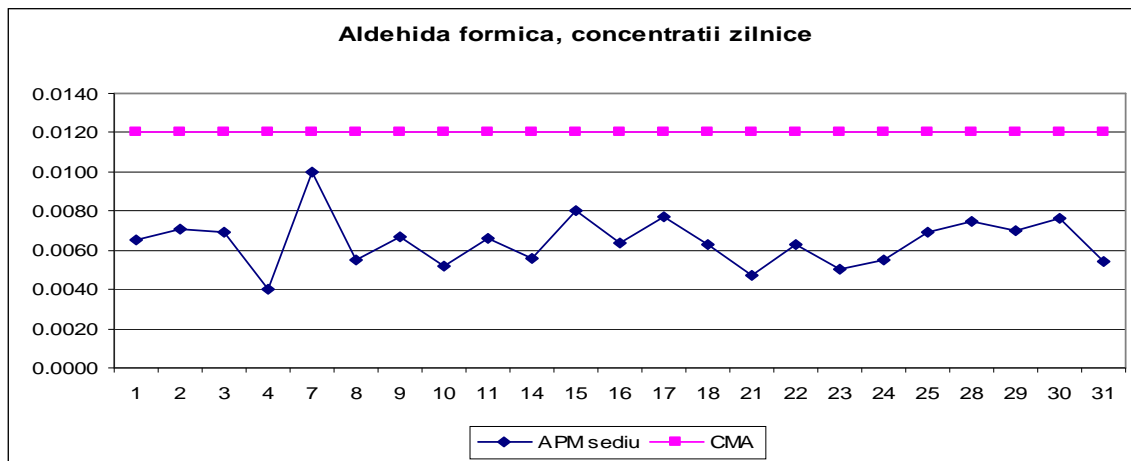
Punct de prelevare APM sediu, poluant masurat aldehida formica, adresa str Ghe Gr Cantacuzino



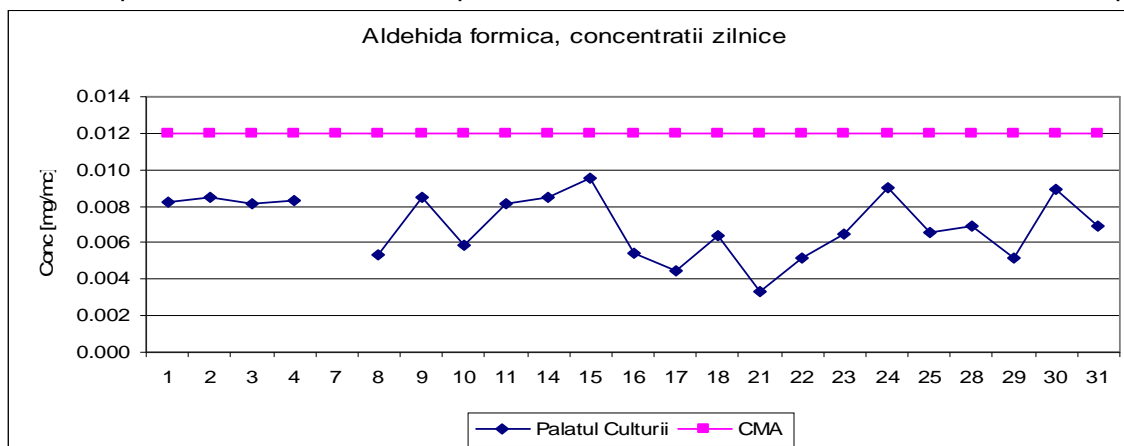
AGENȚIA PENTRU PROTECȚIA MEDIULUI PRAHOVA

Str. Gh.Gr.Cantacuzino, nr.306, Ploiești, Cod 100466

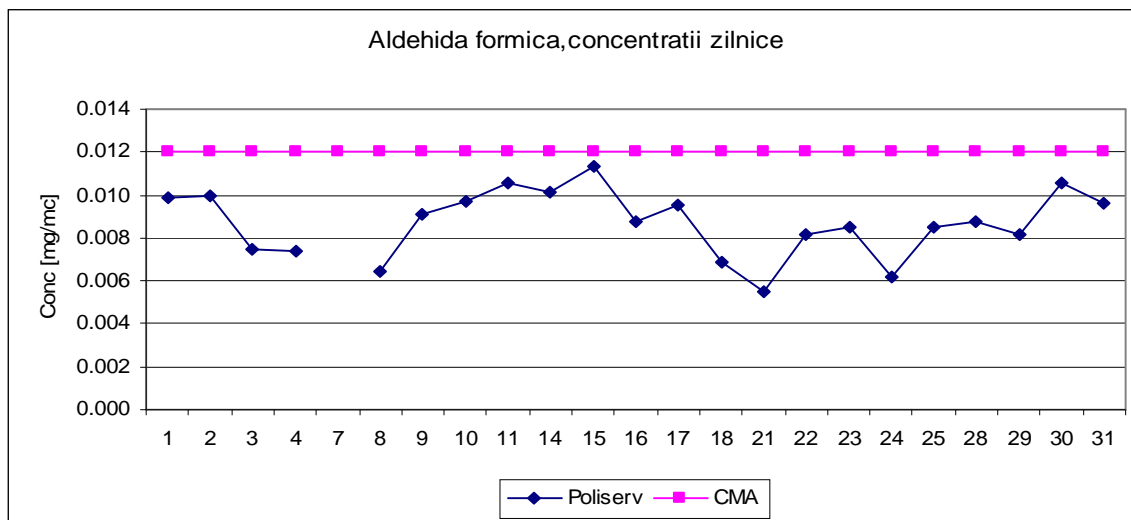
E-mail: office@apmph.anpm.ro; Tel. 0244 544134; Fax. 0244 515811



Punct de prelevare Palatul Culturii, poluant masurat aldehida formica, adresa b-dul Republicii

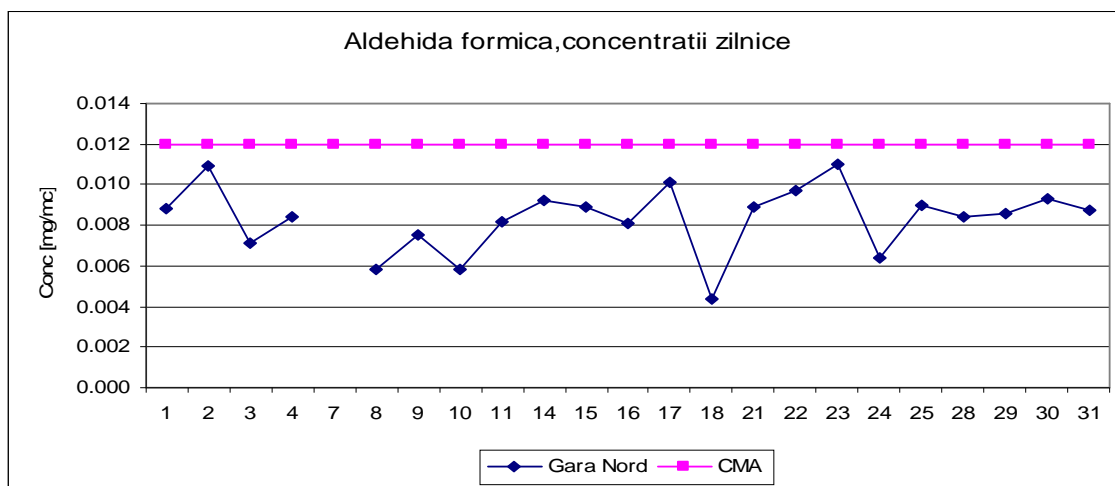


Punct de prelevare POLISERV , poluant masurat aldehida formica, adresa str Strandului

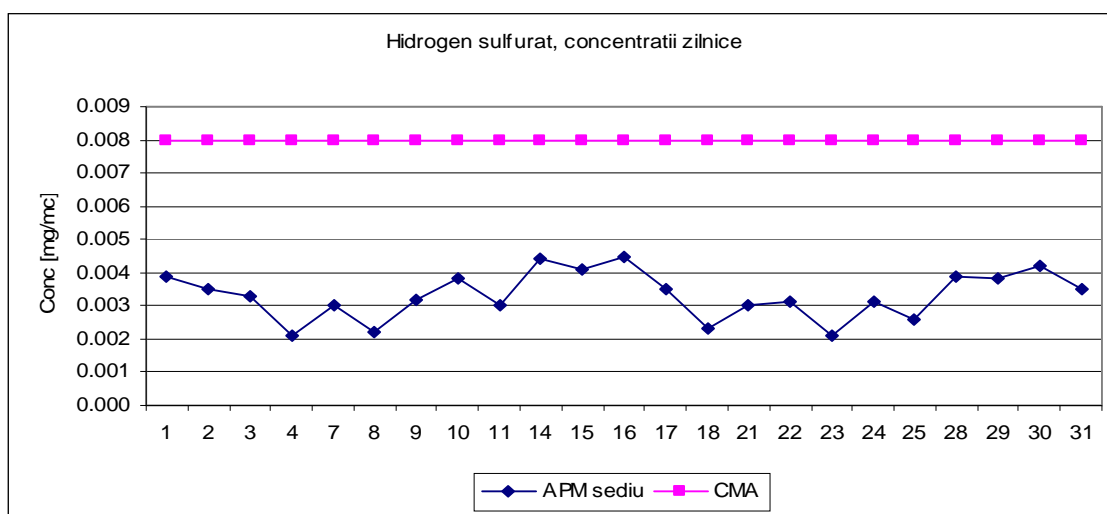


Punct de prelevare Gara Nord , poluant masurat aldehida formica, adresa str Dragalina

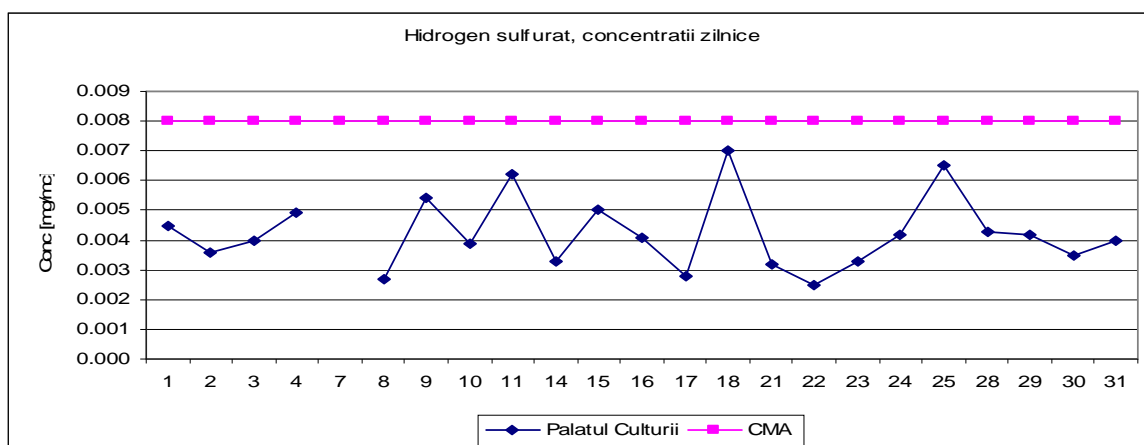




Punct de prelevare APM sediu, poluant masurat hidrogen sulfurat, adresa str Ghe Gr Cantacuzino

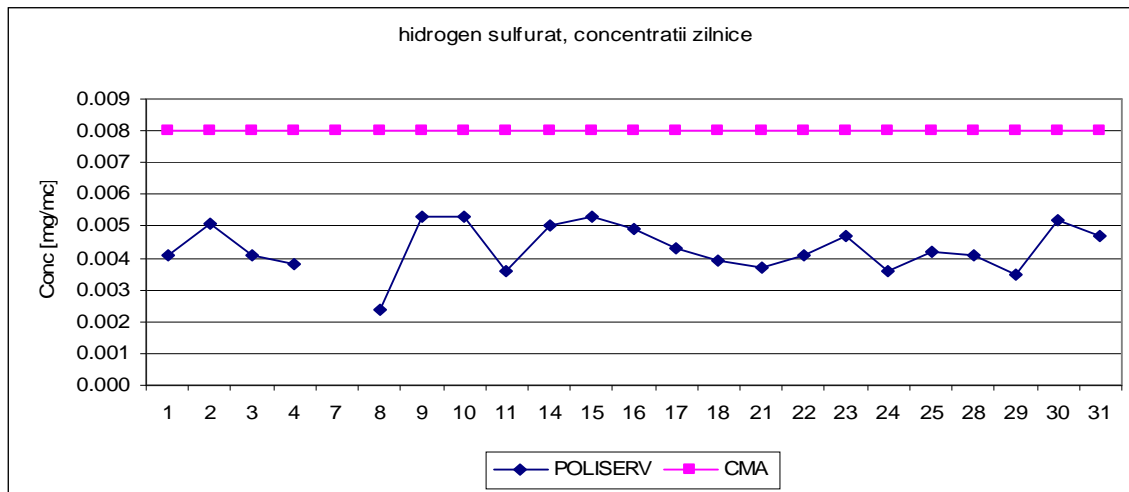


Punct de prelevare Palatul Culturii, poluant masurat hidrogen sulfurat, adresa b-dul Republicii

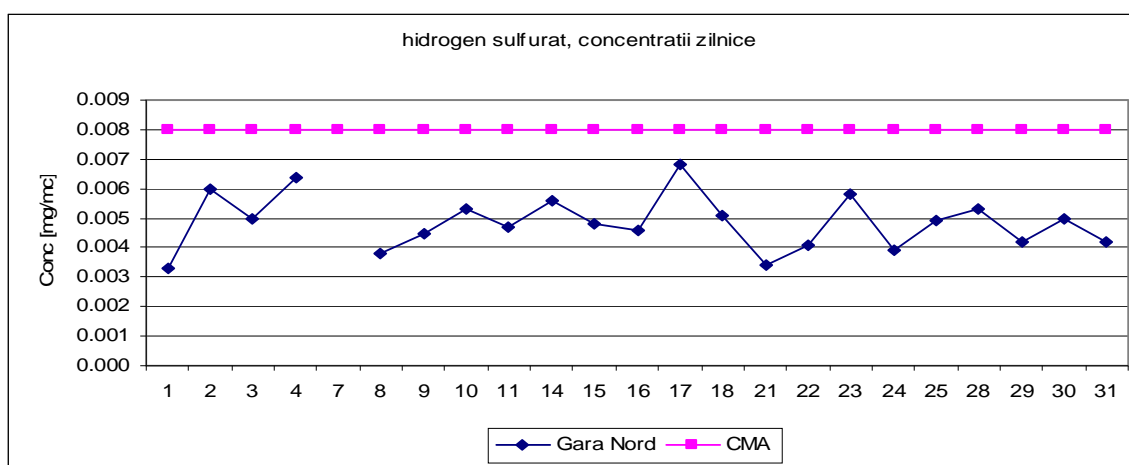


Punct de prelevare POLISERV , poluant masurat hidrogen sulfurat, adresa str Strandului

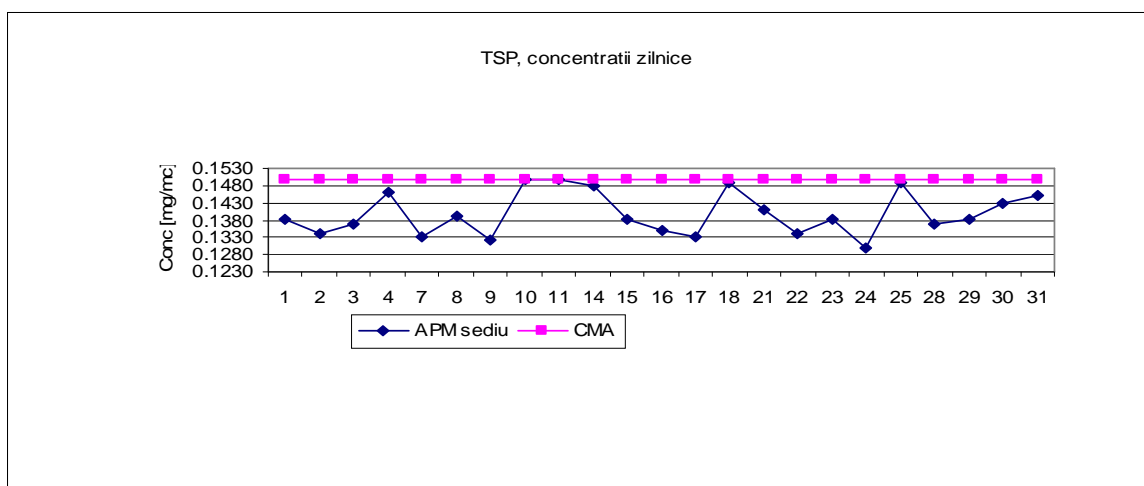




Punct de prelevare Gara Nord , poluant masurat hidrogen sulfurat, adresa str Dragalina



Punct de prelevare APM sediu, poluant masurat TSP, adresa str Ghe Gr Cantacuzino



Datele sunt furnizate in urma prelevarii manuale si determinarilor chimice efectuate in laboratorul APM Prahova.

Sef serviciu Monitorizare si Laboratoare,

Ing. Mateescu Cornelia

Contact APM Prahova

Nume/prenume: Mateescu Cornelia (*conform Anexei 6, din OM 546/2008*)

Adresă de e-mail: office@apmph.anpm.ro Telefon: 0244-544134



AGENȚIA PENTRU PROTECȚIA MEDIULUI PRAHOVA

Str. Gh.Gr.Cantacuzino, nr.306, Ploiești, Cod 100466

E-mail: office@apmph.anpm.ro; Tel. 0244 544134; Fax. 0244 515811