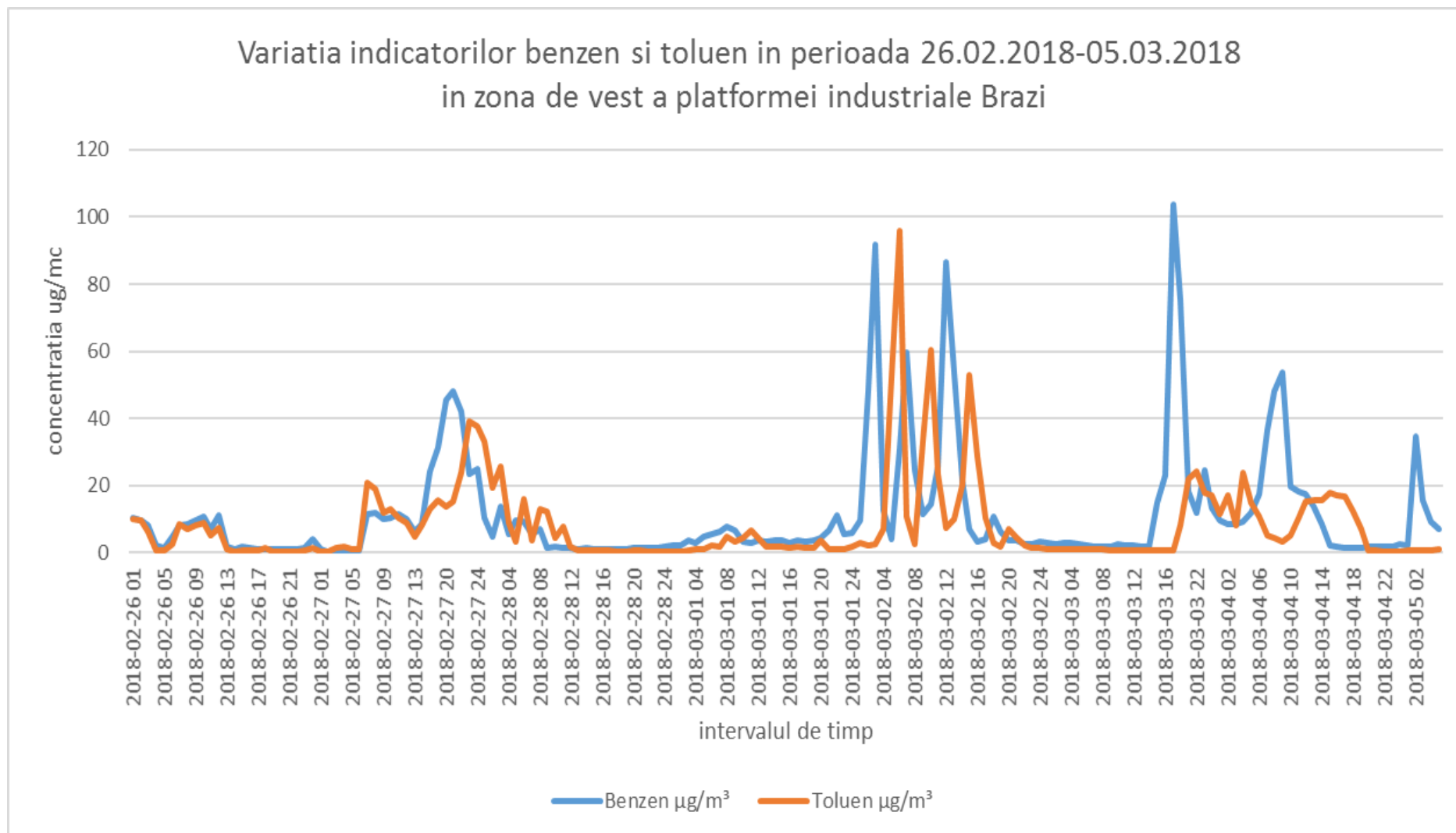
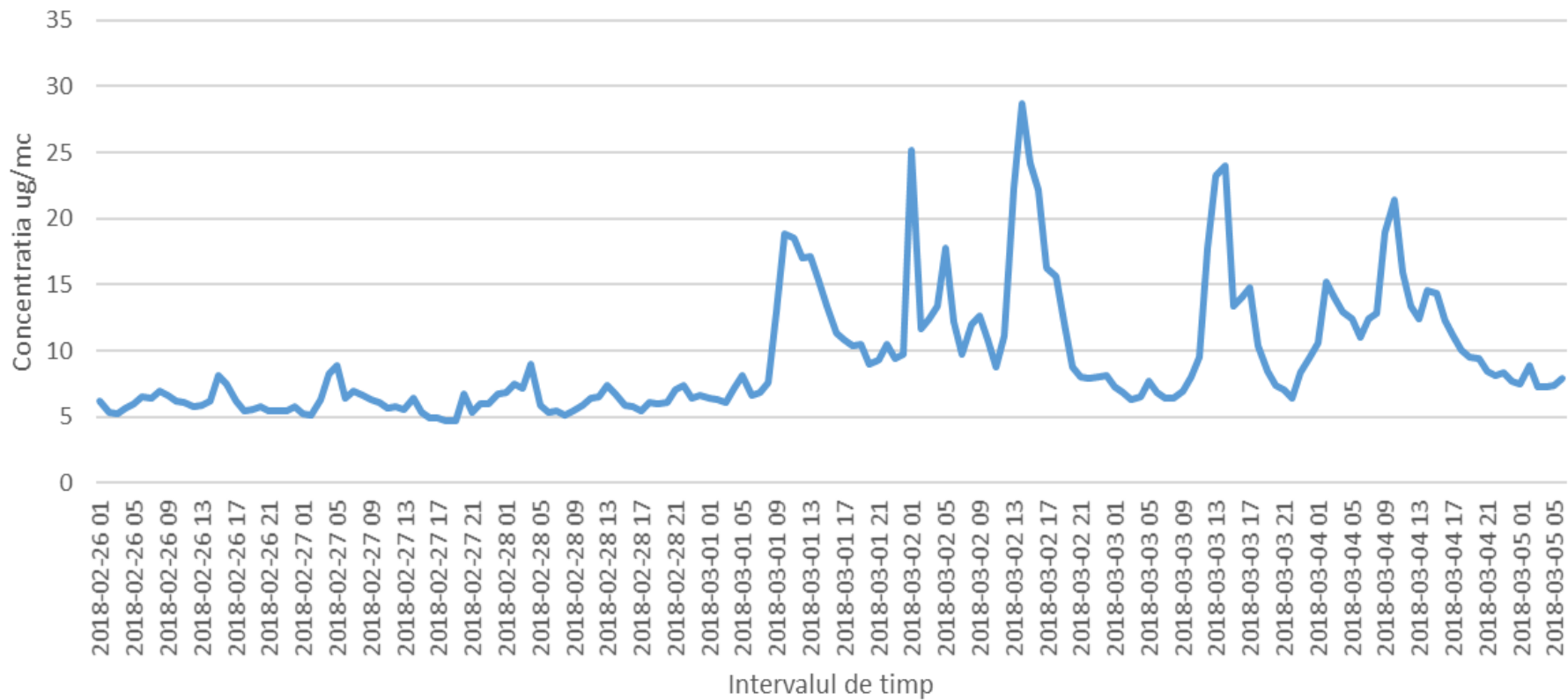


Nota* In data de 21.02.2018 laboratorul mobil a fost mutat pe latura vestica a platformei industrial Brazi

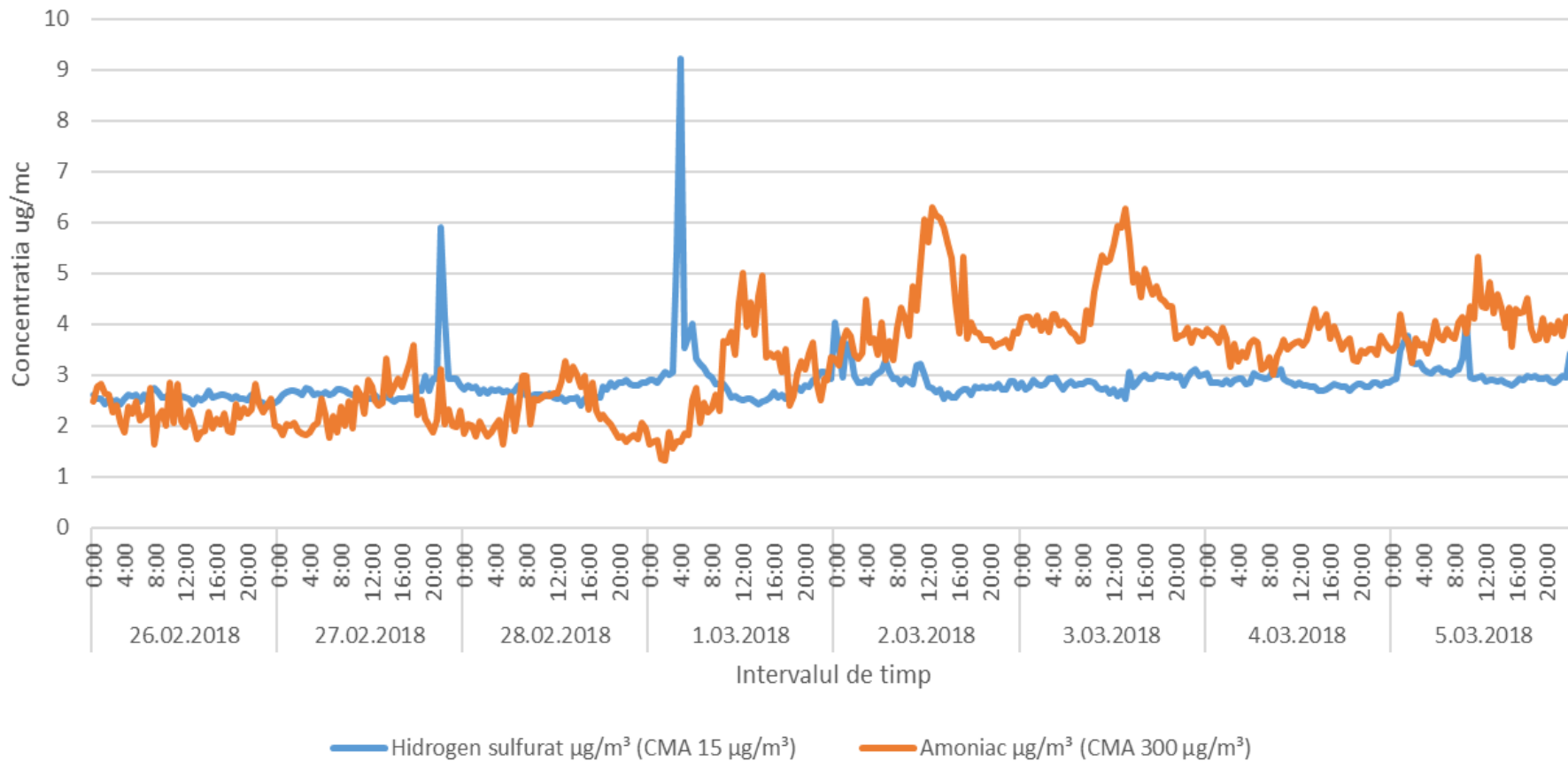


Variatia indicatorului dioxid de sulf in perioada 26.02.2018-05.03.2018 in zona de vest a platformei industriale Brazi

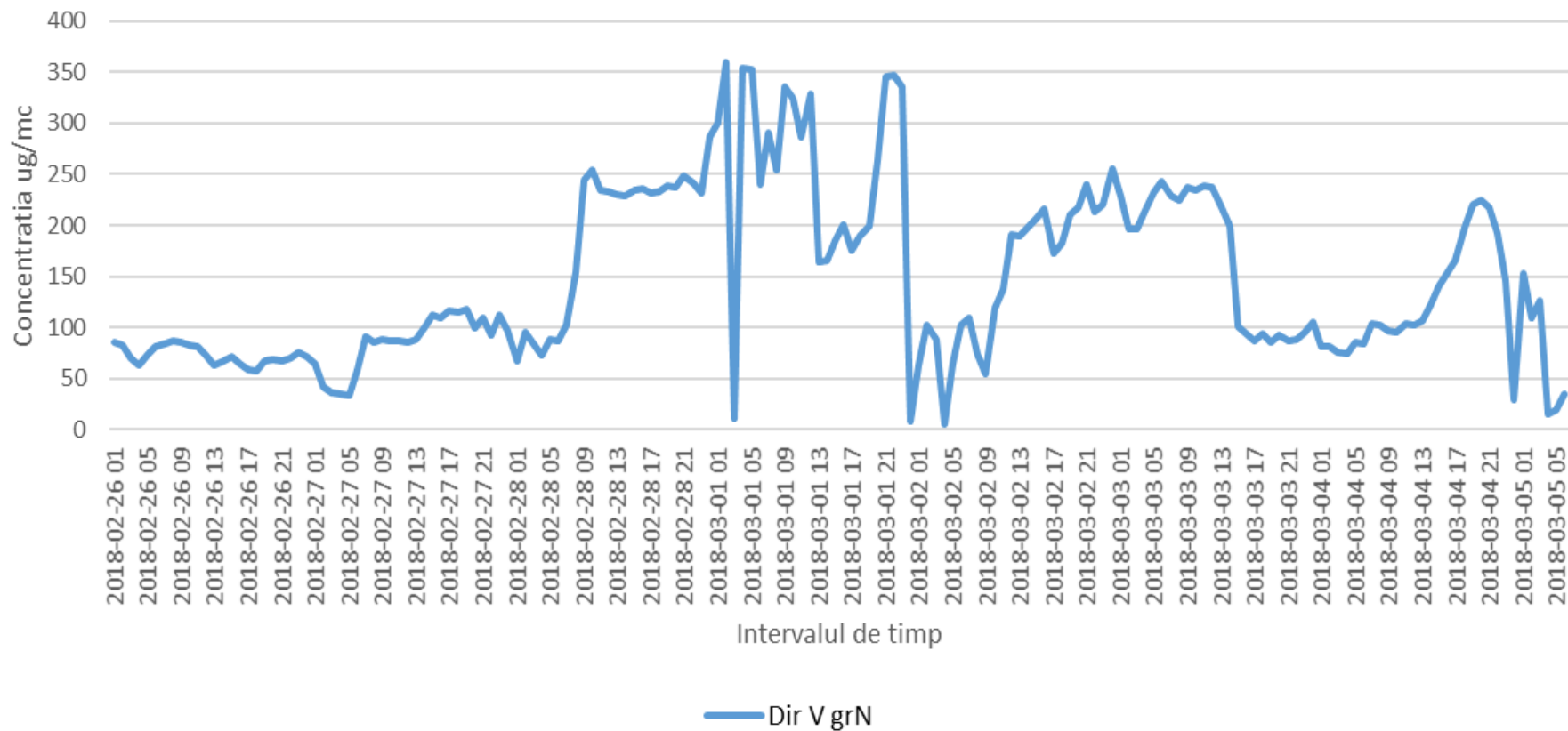


— Dioxid de sulf $\mu\text{g}/\text{m}^3$ (VLE 350 ug/mc)

Variatia indicatorilor hidrogen sulfurat si amoniac in perioada 26.02.2018-05.03.2018
in zona de vest a platformei industriale Brazi



Variatia directiei vantului in perioada 26.02.2018-05.03.2018 in zona de nord/vest a platformei industriale Brazi



Variatia vitezei vantului in perioada 26.02.2018-05.03.2018
in zona de vest a platformei industriale Brazi

