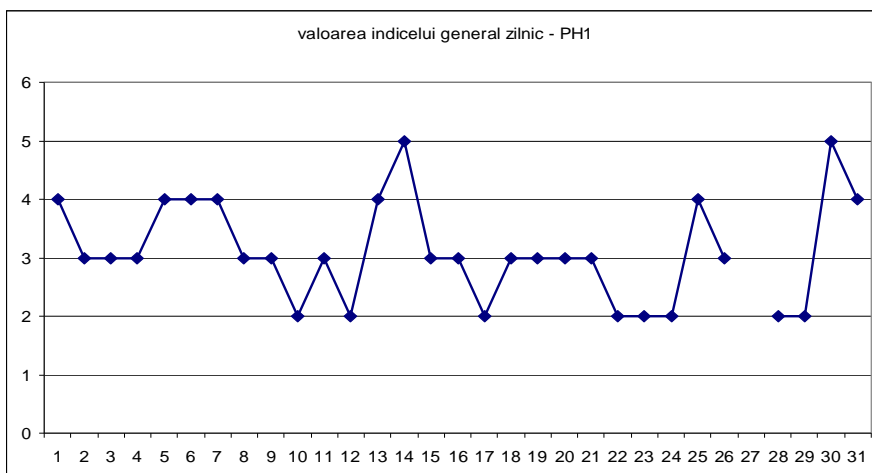
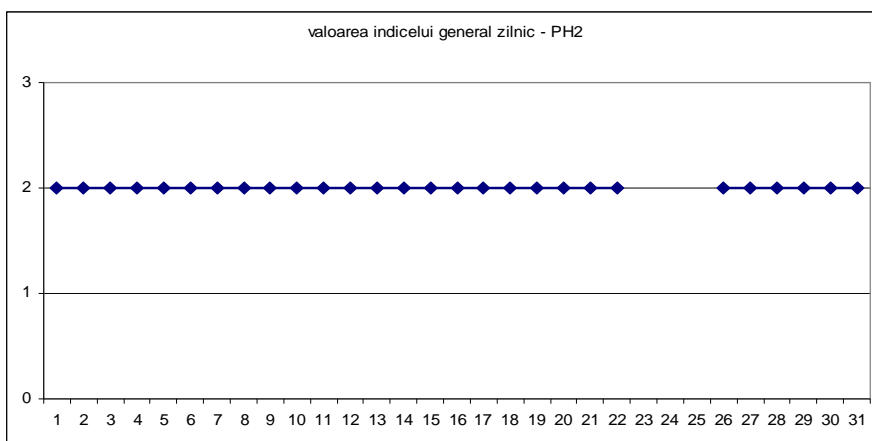


Evolutia indicelui general de calitate a aerului din rețeaua locala de monitorizare:

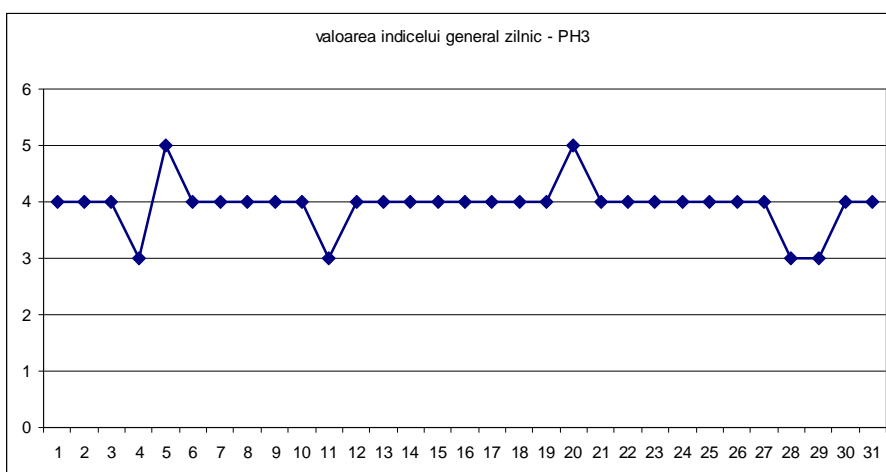
Statia PH1- str Ghe.Gr. Cantacuzino



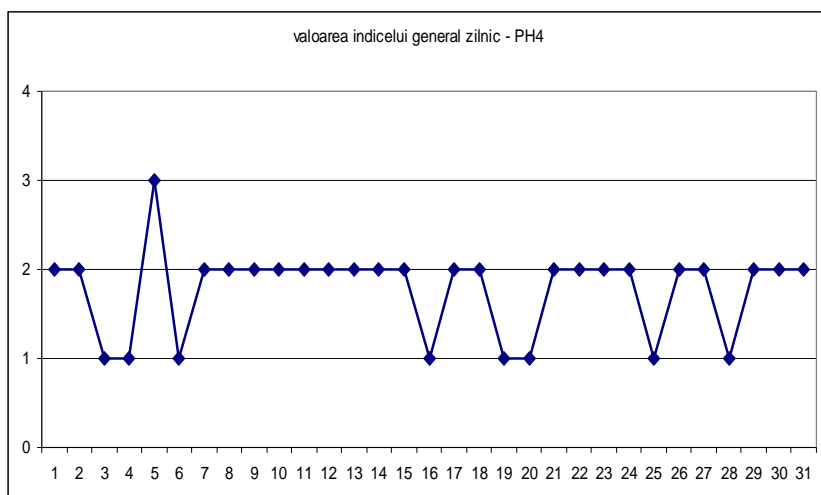
Statia PH2 - p-ta Victoriei



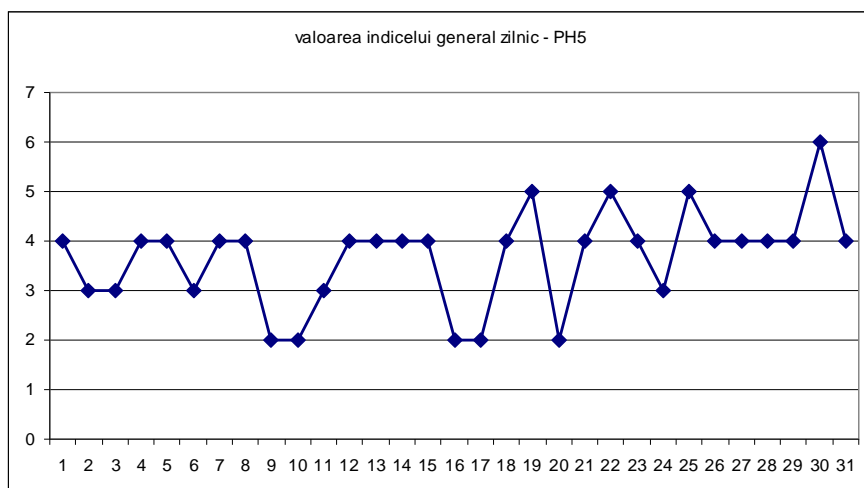
Statia PH3 -Blejoi, primarie



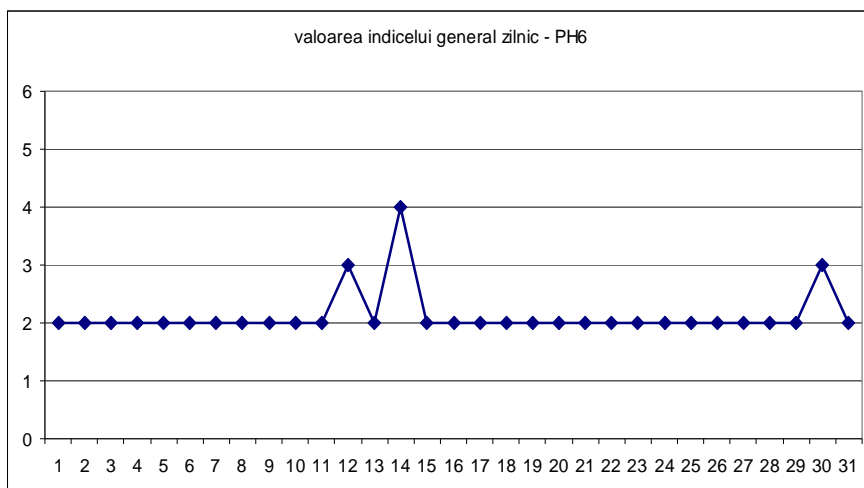
Statia PH4 - Brazi, primarie



Statia PH 5 – B-dul Bucuresti



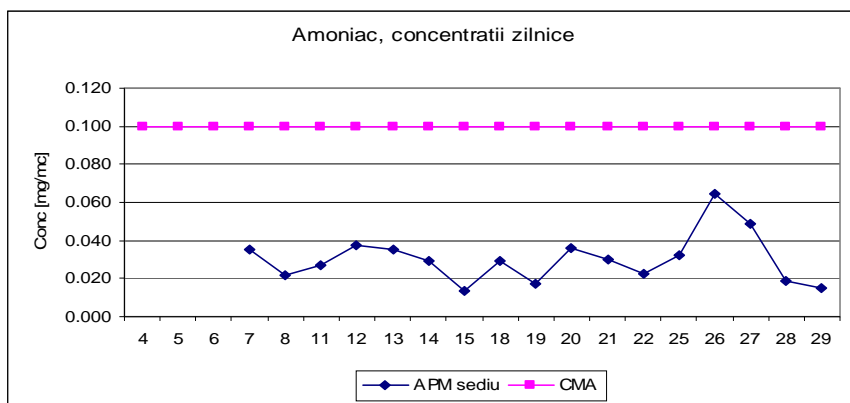
Statia PH 6- Mihai Bravu



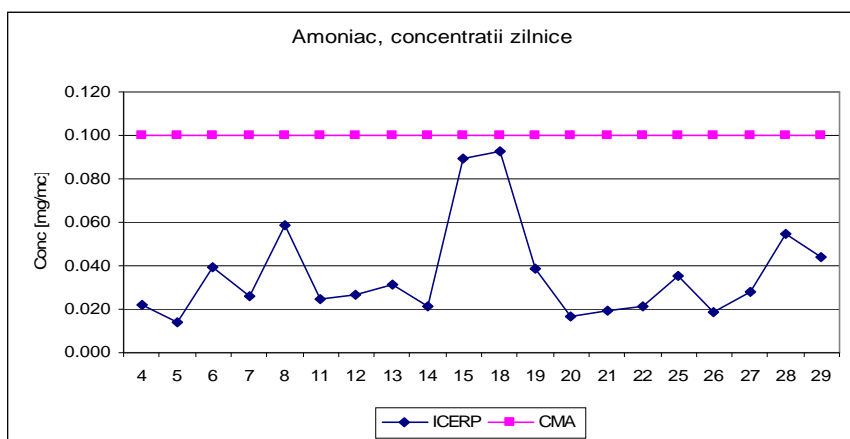
Datele sunt furnizate de statiile automate din Reteaua nationala de Monitorizare a Calitatii Aerului.

B. Variatia concentratiilor medii zilnice pentru indicatorii specifici –statii manuale de monitorizare

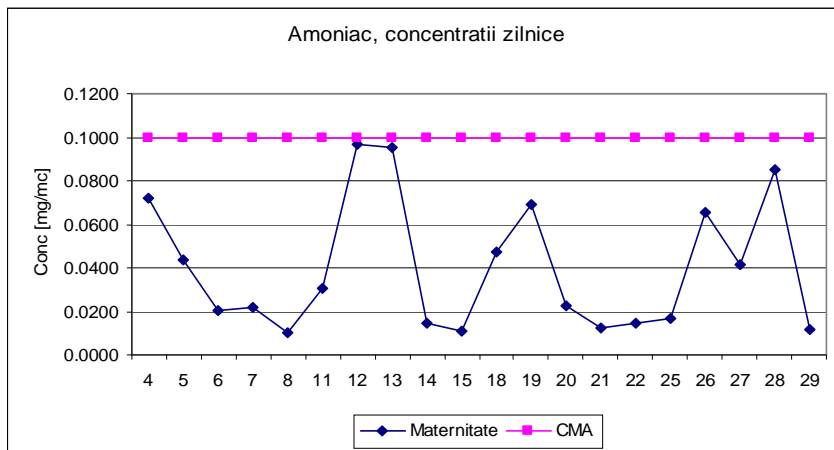
Punct de prelevare APM sediu, poluant masurat amoniac, adresa str Ghe Gr Cantacuzino



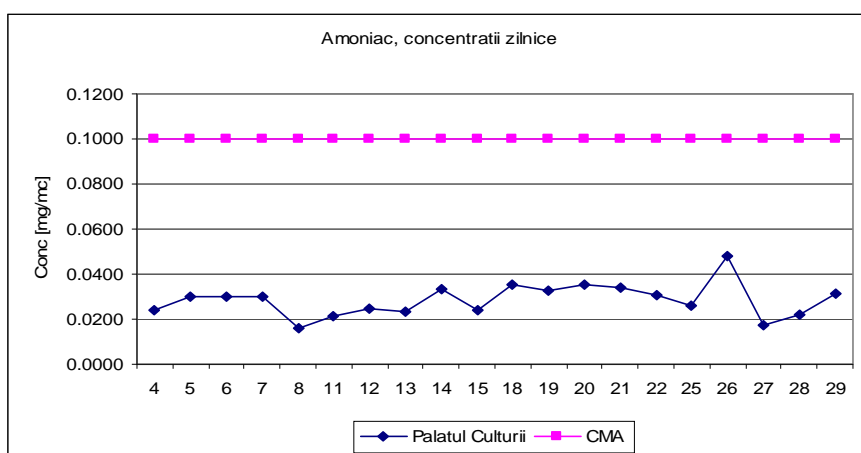
Punct de prelevare ICERP, poluant masurat amoniac, adresa soseaua Vestului



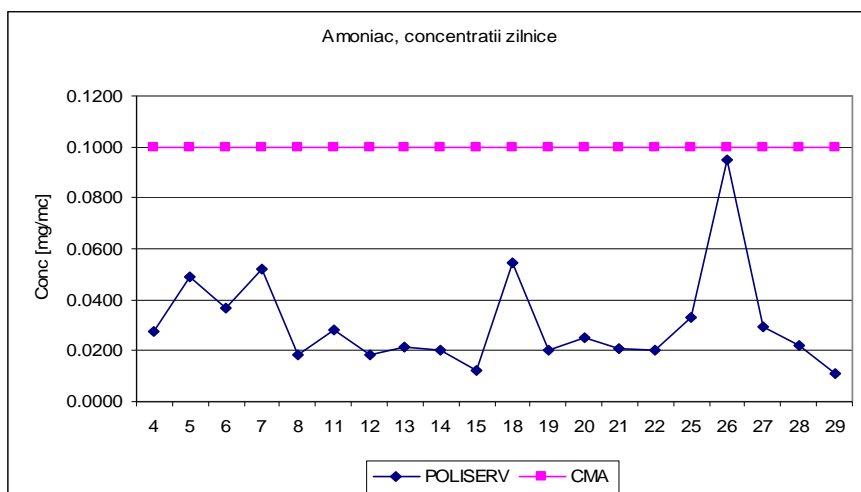
Punct de prelevare Sp de Obstetrica si Ginecologie, poluant masurat amoniac ,adresa str. M. Bravu



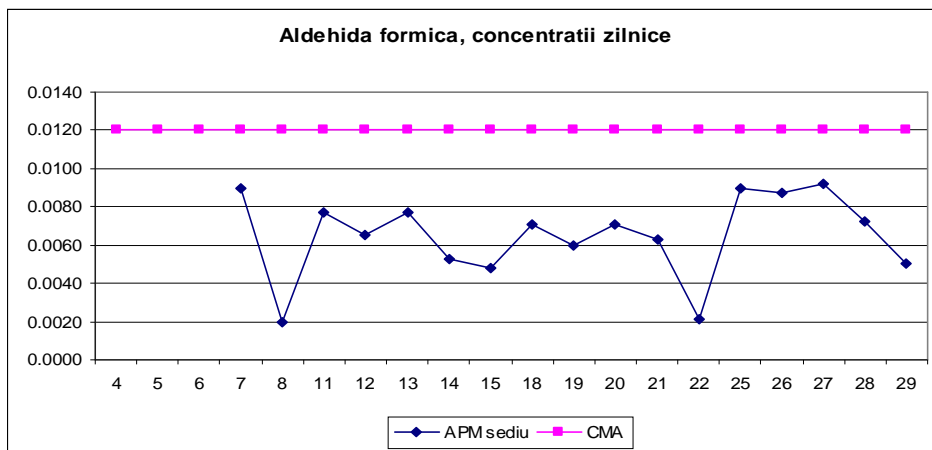
Punct de prelevare Palatul Culturii, poluant masurat amoniac, adresa b-dul Republicii



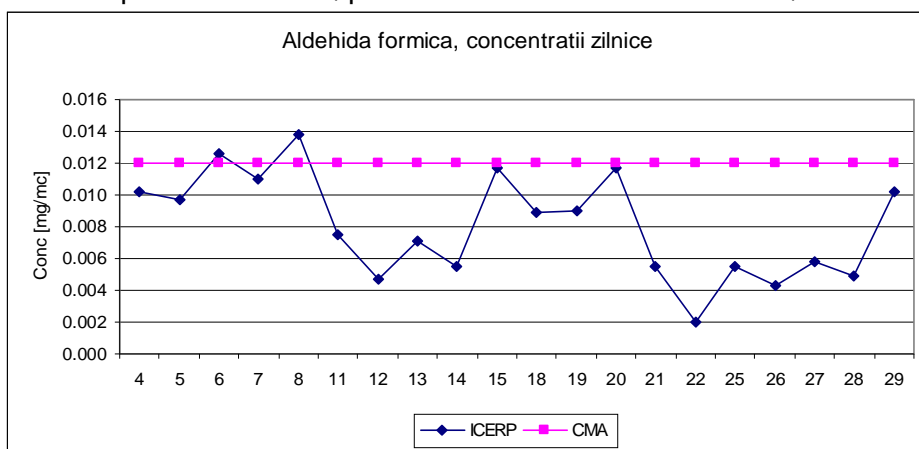
Punct de prelevare POLISERV , poluant masurat amoniac, adresa str Strandului



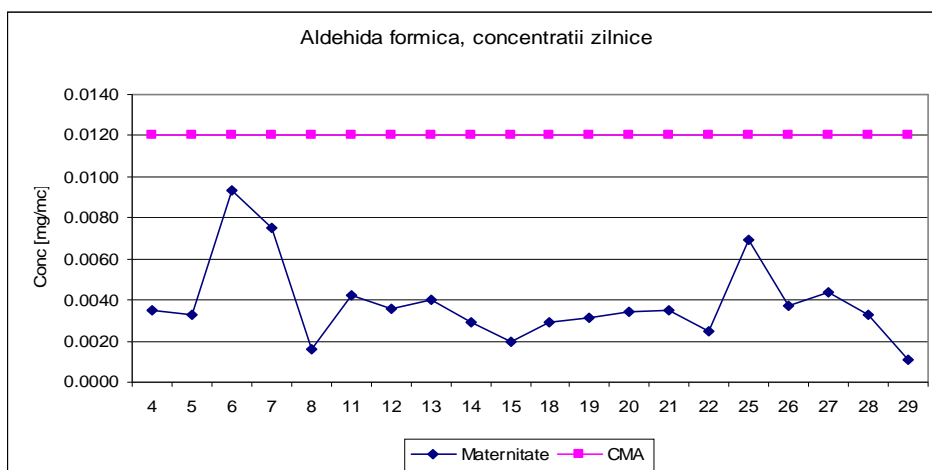
Punct de prelevare APM sediu, poluant masurat aldehida formica, adresa str Ghe Gr Cantacuzino



Punct de prelevare ICERP , poluant masurat aldehida formica, adresa soseaua Vestului

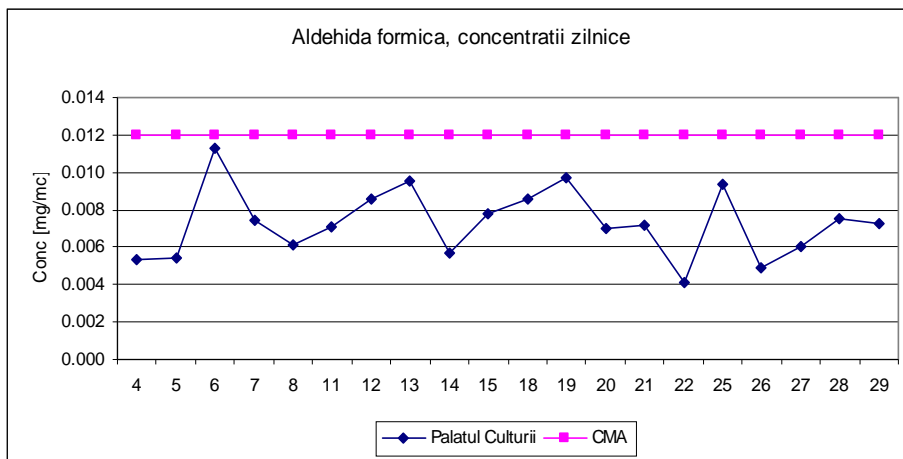


Punct de prelevare Sp de Obstetrica si Ginecologie, poluant masurat aldehida formica, adresa str M. Bravu

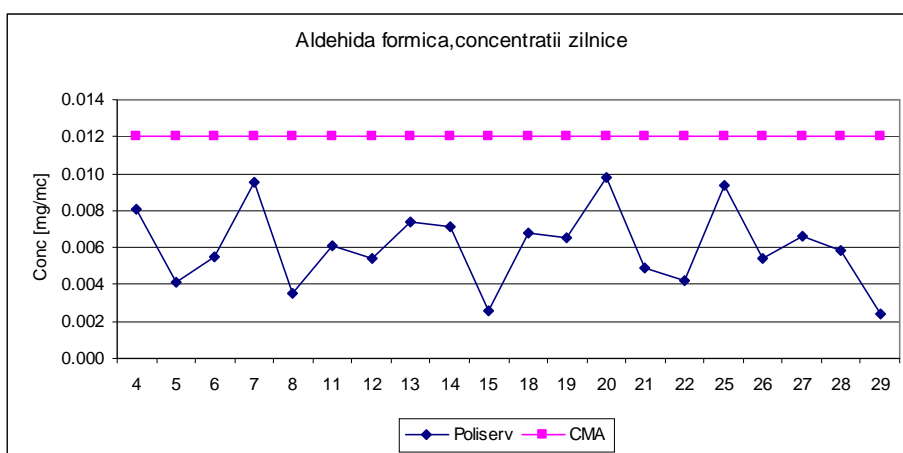


Punct de prelevare Palatul Culturii, poluant masurat aldehida formica, adresa b-dul Republicii

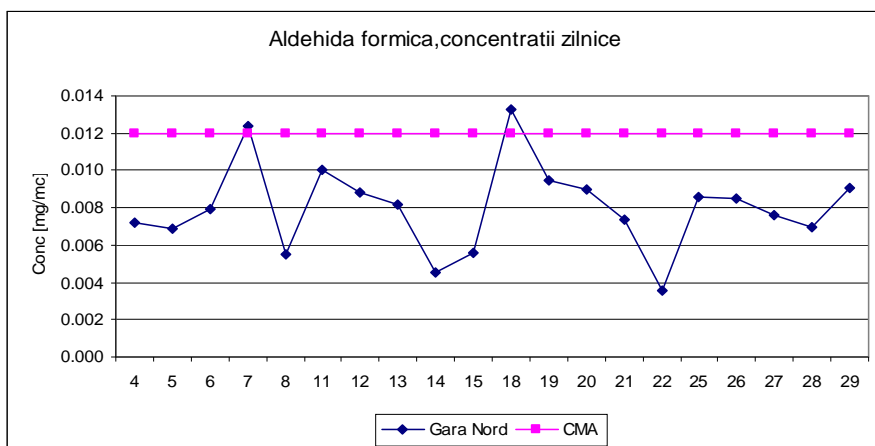




Punct de prelevare POLISERV , poluant masurat aldehida formica, adresa str Strandului

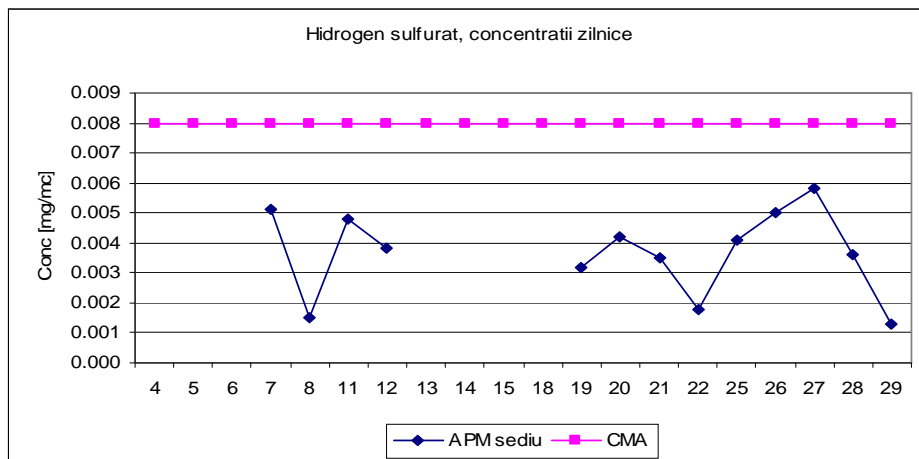


Punct de prelevare Gara Nord , poluant masurat aldehida formica, adresa str Dragalina

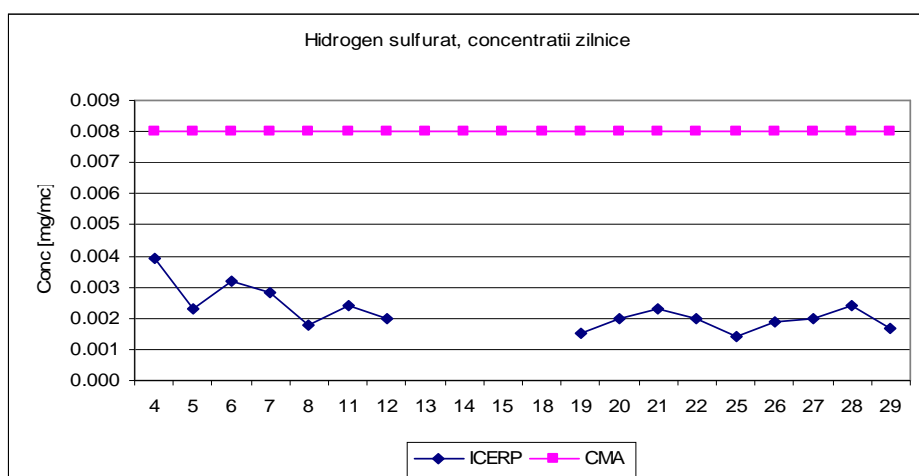


Punct de prelevare APM sediu, poluant masurat hidrogen sulfurat, adresa str Ghe Gr Cantacuzino

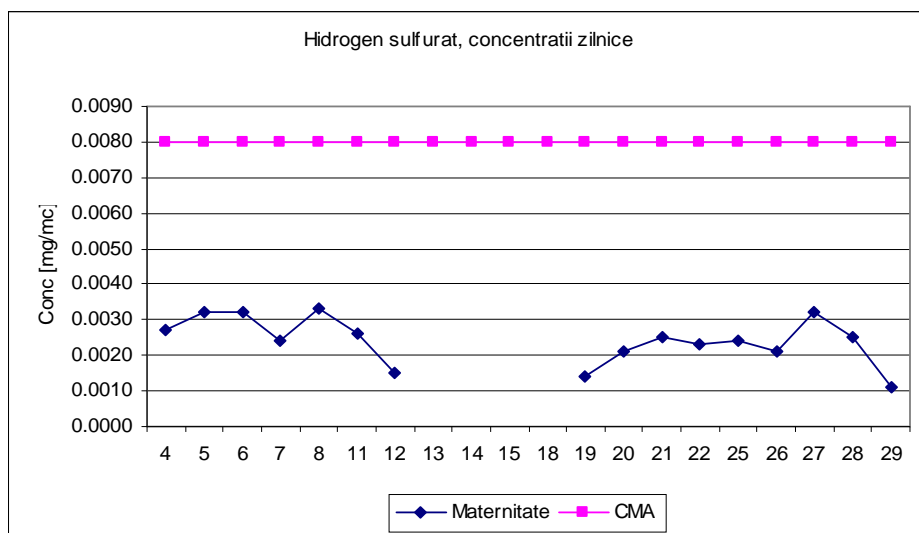




Punct de prelevare ICERP, poluant masurat hidrogen sulfurat, adresa soseaua Vestului

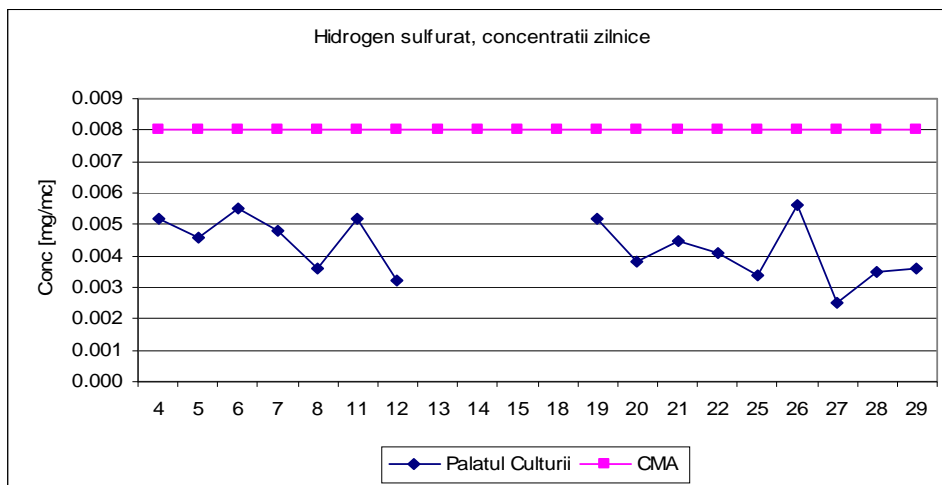


Punct de prelevare Sp de Obstetrica si Ginecologie, poluant masurat hidrogen sulfurat, adresa str M. Bravu

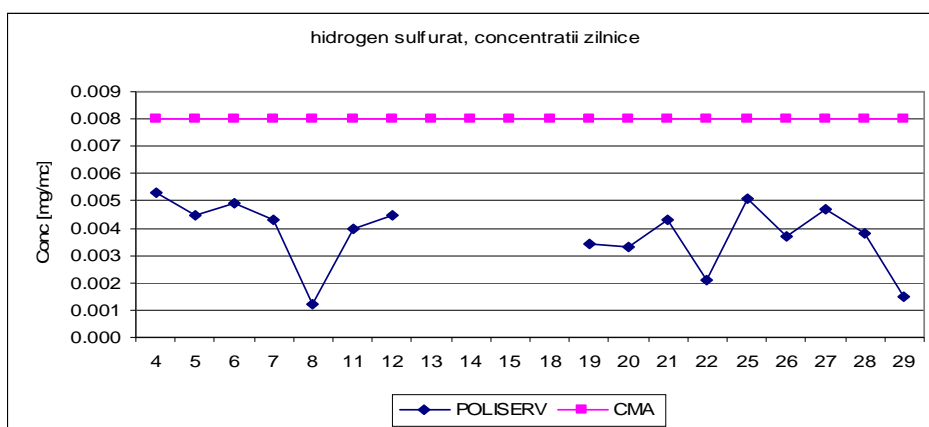


Punct de prelevare Palatul Culturii, poluant masurat hidrogen sulfurat, adresa b-dul Republicii

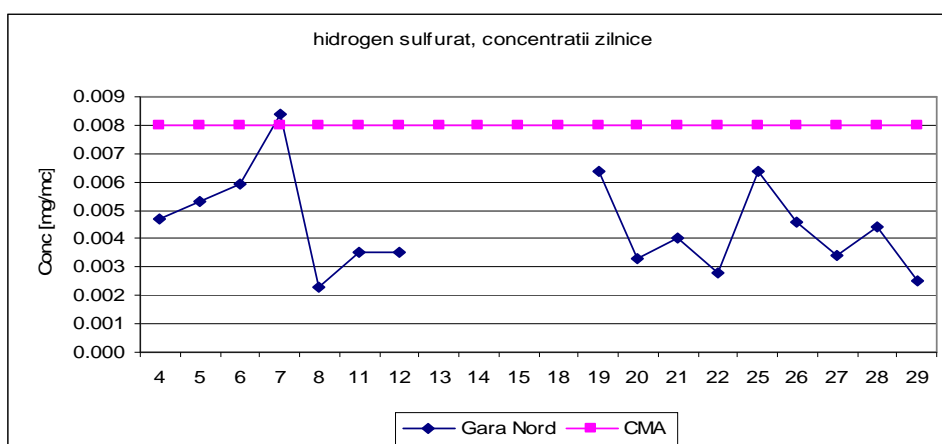




Punct de prelevare POLISERV , poluant masurat hidrogen sulfurat, adresa str Strandului

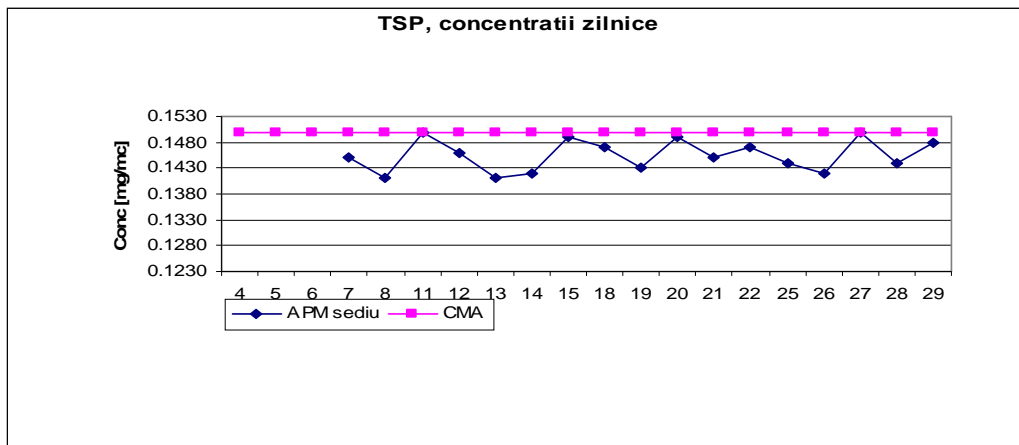


Punct de prelevare Gara Nord , poluant masurat hidrogen sulfurat, adresa str Dragalina

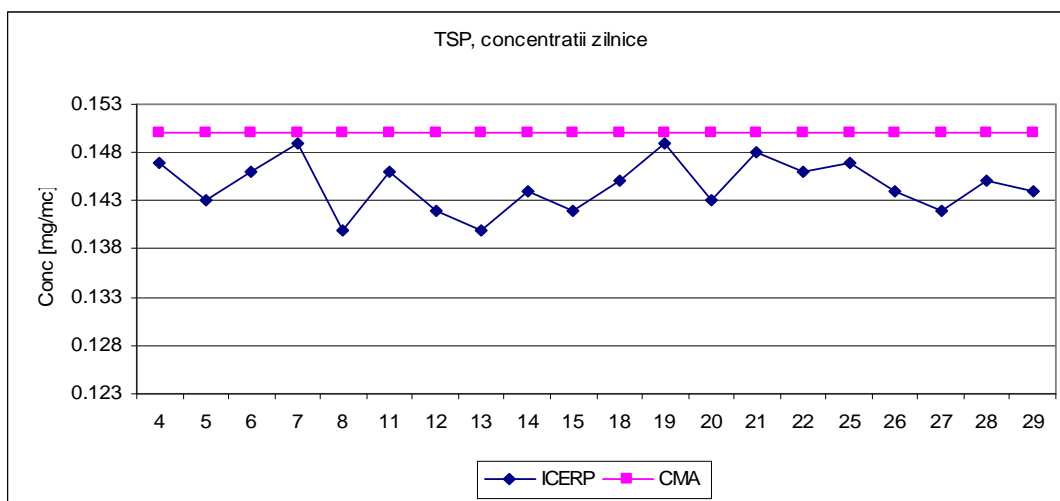


Punct de prelevare APM sediu, poluant masurat TSP, adresa str Ghe Gr Cantacuzino

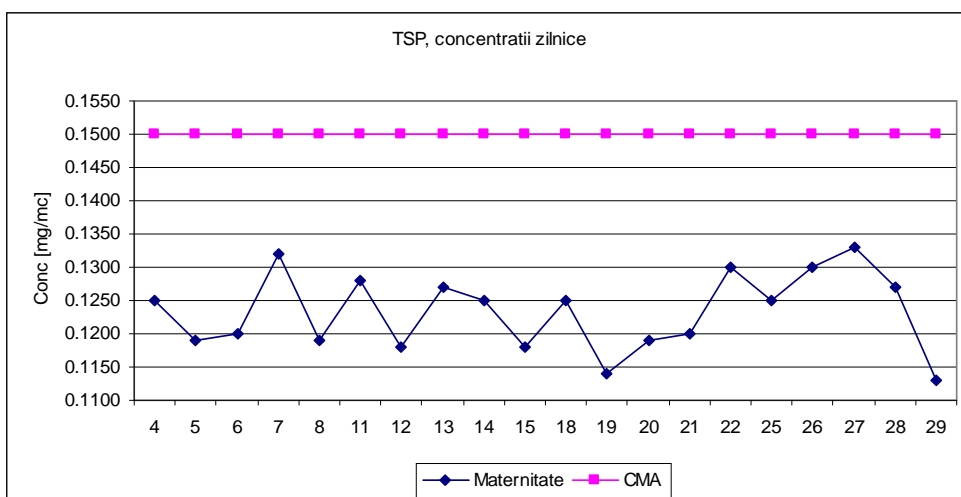




Punct de prelevare ICERP , poluant masurat TSP, adresa soseaua Vestului



Punct de prelevare Sp de Obstetrica si Ginecologie, poluant masurat TSP, adresa str M. Bravu



Datele sunt furnizate in urma prelevarii manuale si determinarilor chimice efectuate in laboratorul APM Prahova.

Sef serviciu Monitorizare si Laboratoare,

Ing. Mateescu Cornelia

Contact APM Prahova

Nume/prenume: Mateescu Cornelia (*conform Anexei 6, din OM 546/2008*)

Adresă de e-mail: office@apmph.anpm.ro Telefon: 0244-544134

