



Agenția pentru Protecția Mediului Prahova

ANEXA 10

Nr.7575/ 10.07.2015

INFORMARE

Evoluția calitatii aerului în luna iunie 2015

Prezentăm mai jos evoluția indicelui general de calitate a aerului din rețeaua locală de monitorizare a calitatii aerului automată și manuală.

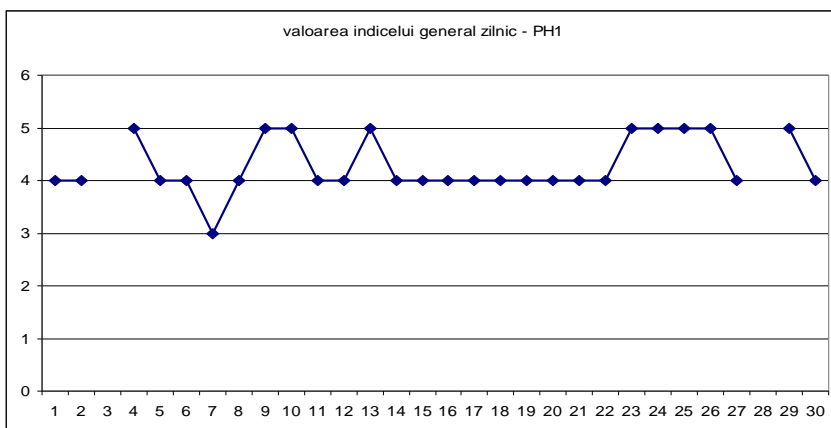


A.

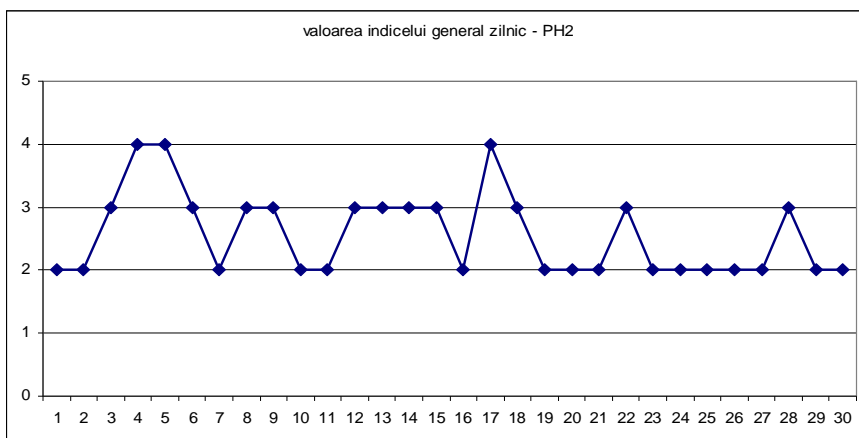


Evoluția indicelui general de calitate a aerului din rețeaua locală de monitorizare:

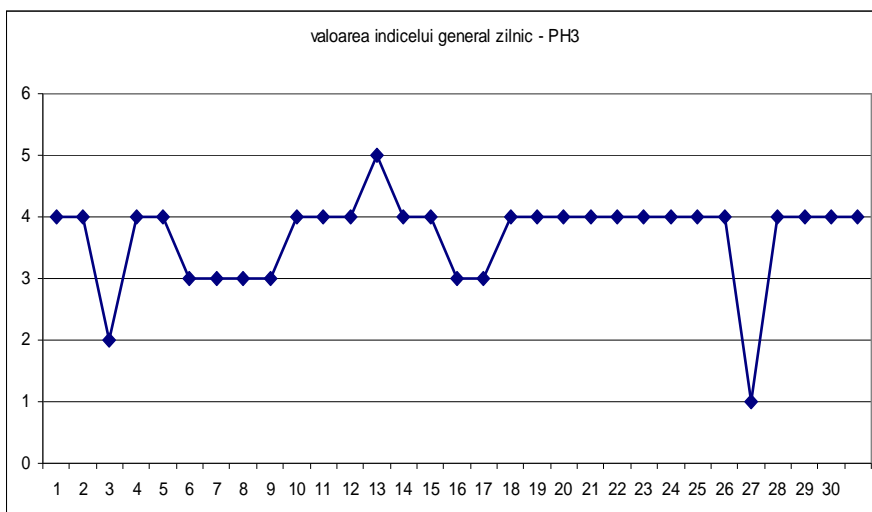
Stia PH1- str Ghe.Gr. Cantacuzino



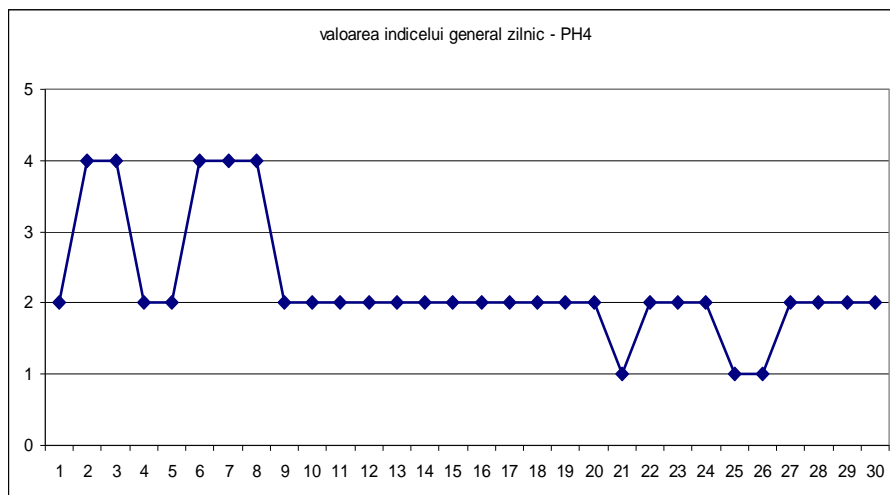
Stia PH2 - p-ta Victoriei



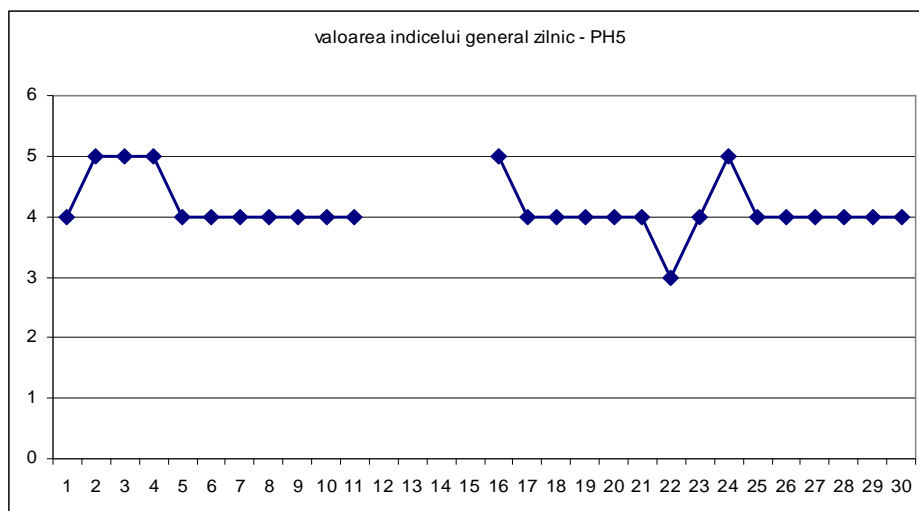
Stia PH3 -Blejoi, primarie



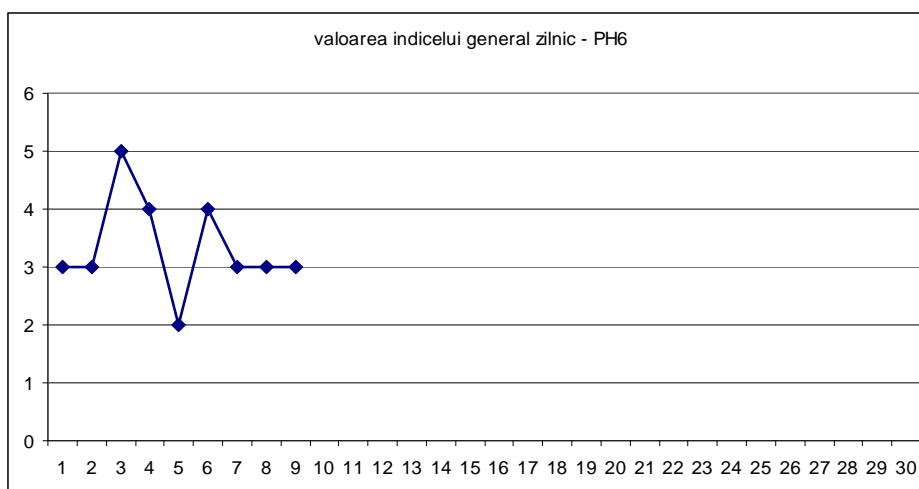
Statia PH4 - Brazi, primarie



Statia PH 5 – B-dul Bucuresti



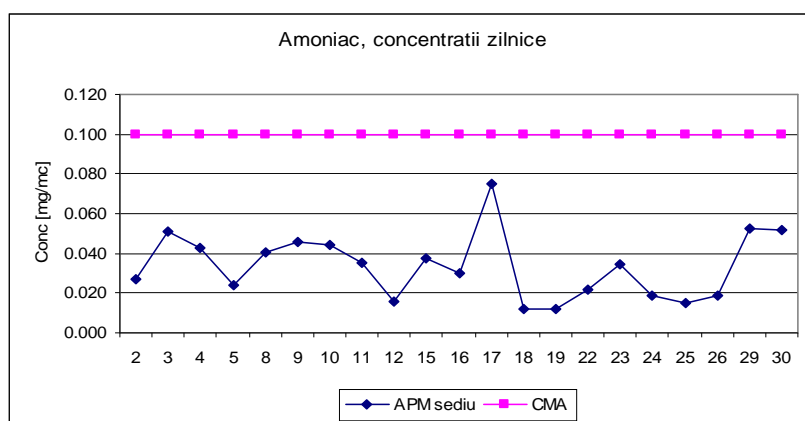
Statia PH 6- Mihai Bravu



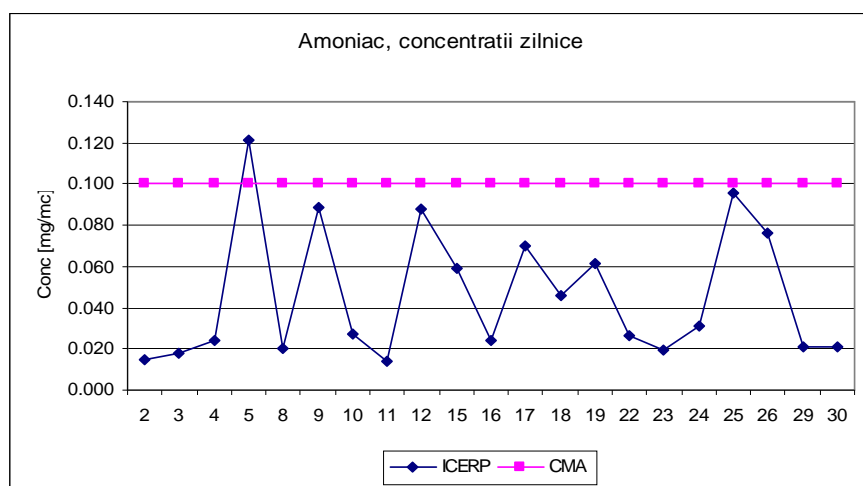
Datele sunt furnizate de statiile automate din Reteaua nationala de Monitorizare a Calitatii Aerului.

B. Variatia concentratiilor medii zilnice pentru indicatorii specifici –statii manuale de monitorizare

Punct de prelevare APM sediu, poluant masurat amoniac, adresa str Ghe Gr Cantacuzino

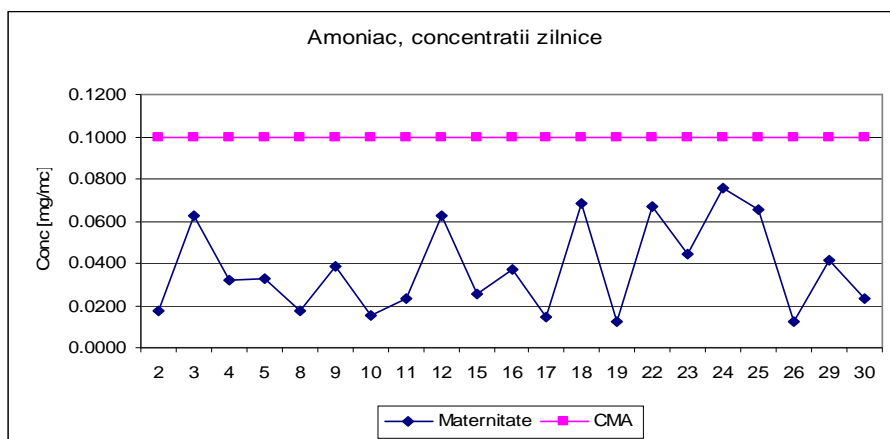


Punct de prelevare ICERP, poluant masurat amoniac, adresa soseaua Vestului

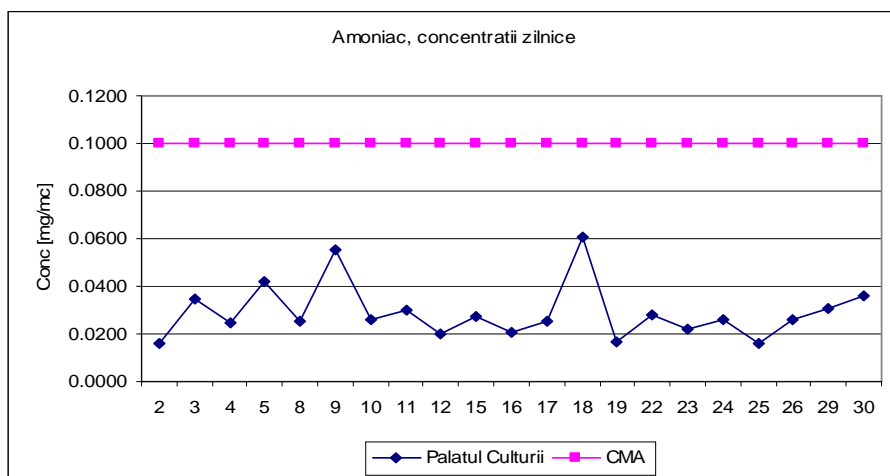


Punct de prelevare Sp de Obstetrica si Ginecologie, poluant masurat amoniac ,adresa str. M. Bravu

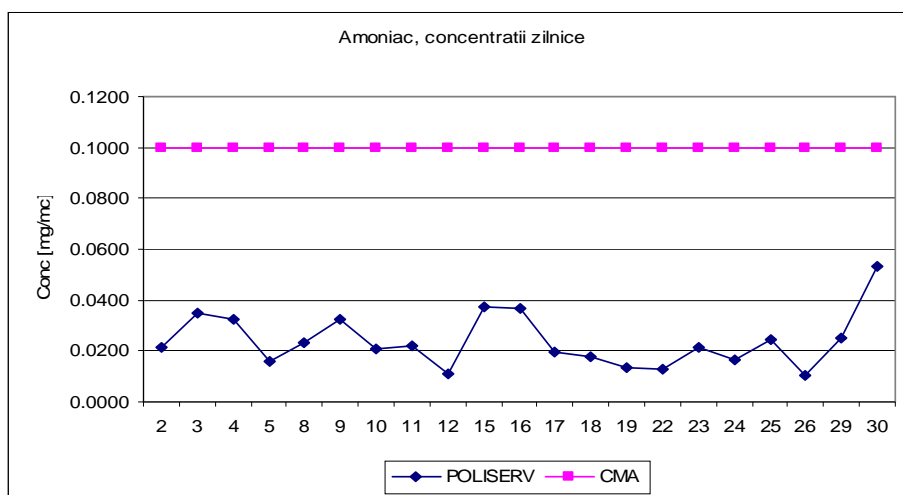




Punct de prelevare Palatul Culturii, poluant masurat amoniac, adresa b-dul Republicii

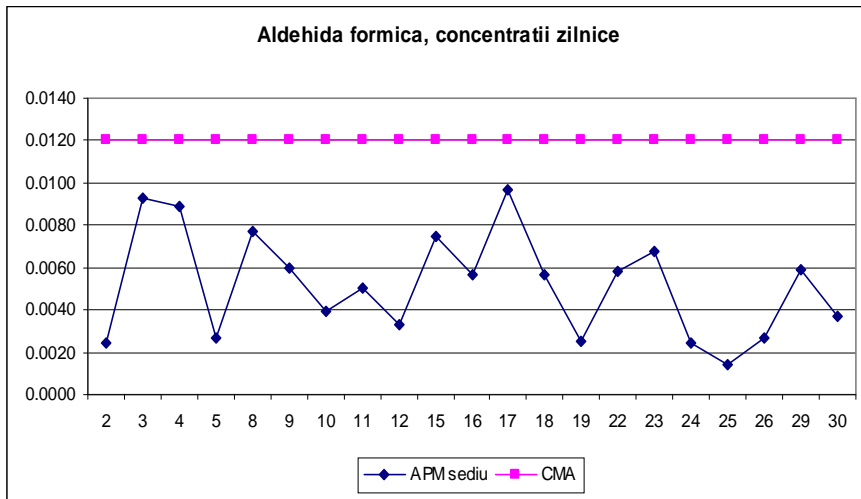


Punct de prelevare POLISERV , poluant masurat amoniac, adresa str Strandului

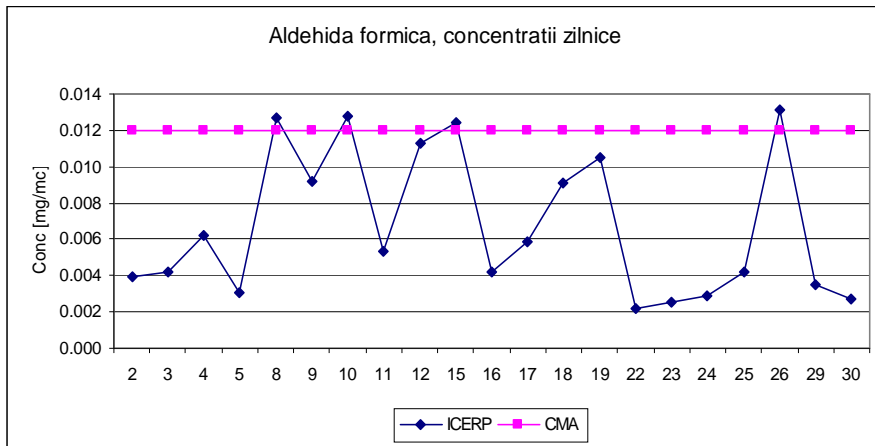


Punct de prelevare APM sediu, poluant masurat alhida formica, adresa str Ghe Gr Cantacuzino

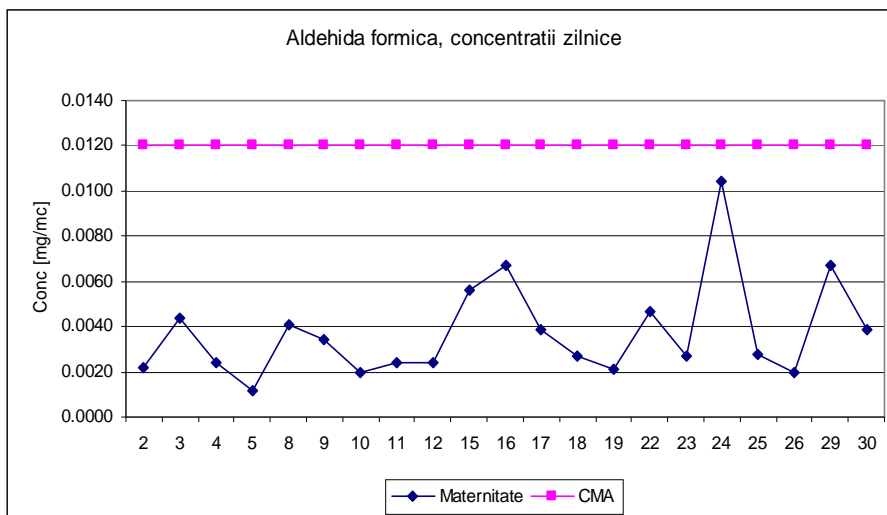




Punct de prelevare ICERP , poluant masurat aldehida formica, adresa soseaua Vestului

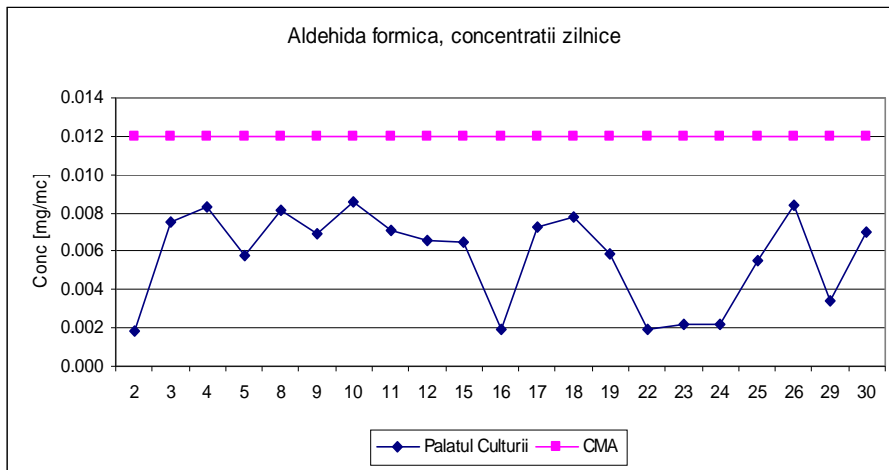


Punct de prelevare Sp de Obstetrica si Ginecologie, poluant masurat aldehida formica, adresa str M. Bravu

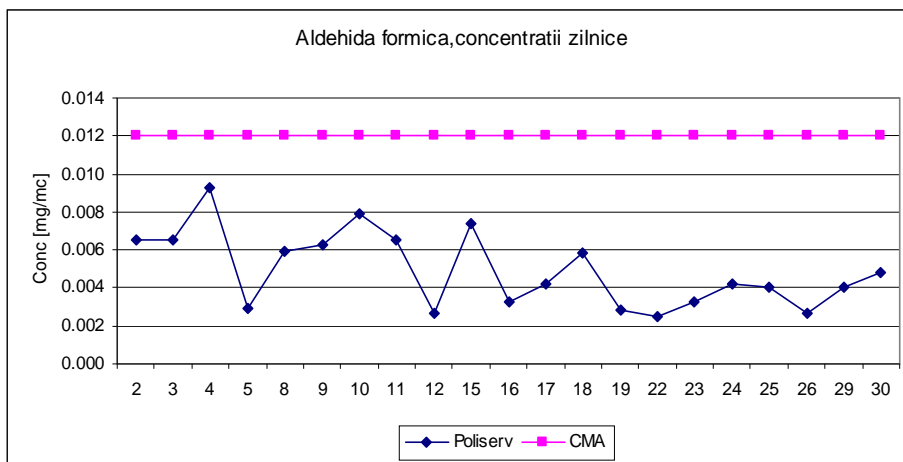


Punct de prelevare Palatul Culturii, poluant masurat aldehida formica, adresa b-dul Republicii

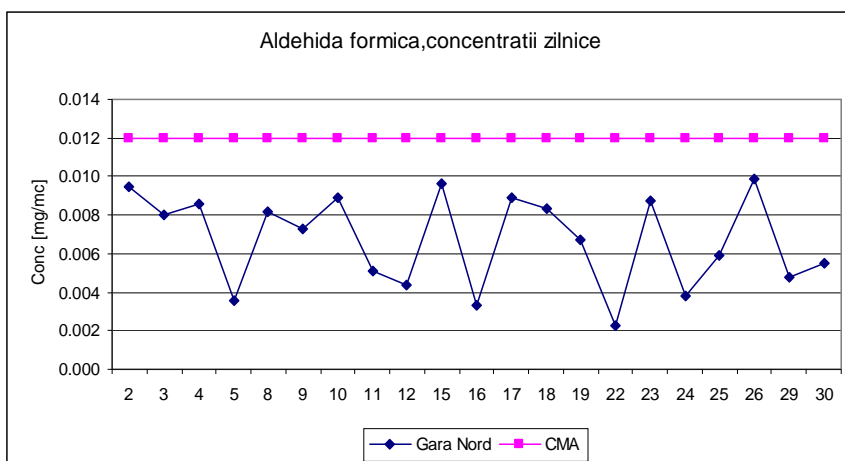




Punct de prelevare POLISERV , poluant masurat aldehida formica, adresa str Strandului

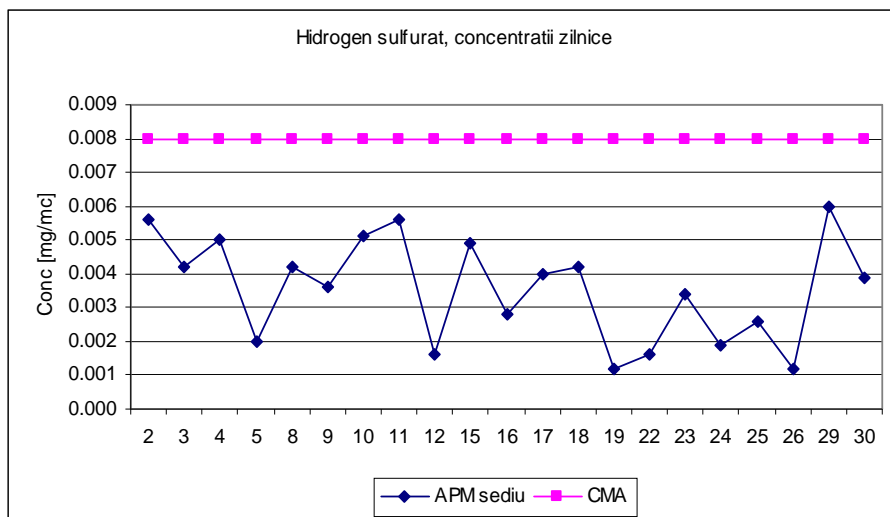


Punct de prelevare Gara Nord , poluant masurat aldehida formica, adresa str Dragalina

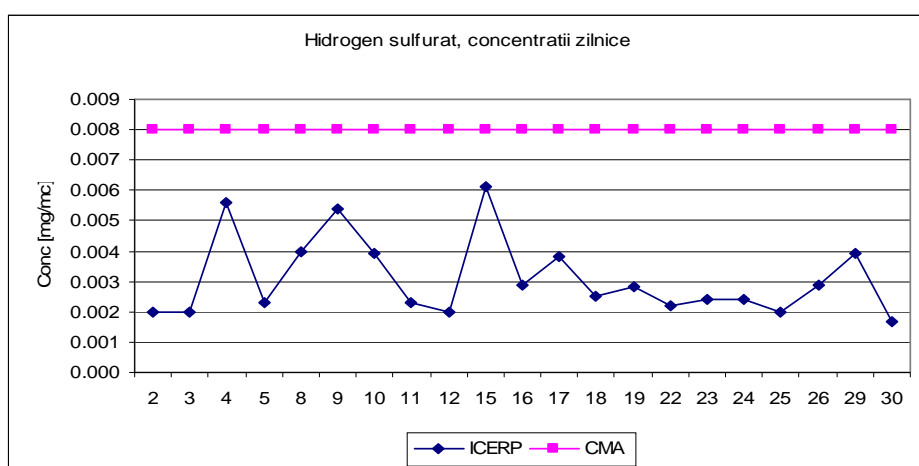


Punct de prelevare APM sediu, poluant masurat hidrogen sulfurat, adresa str Ghe Gr Cantacuzino

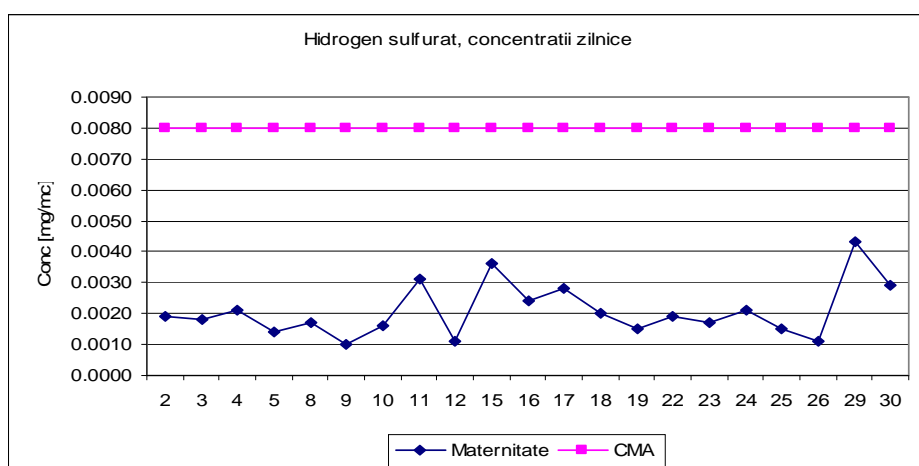




Punct de prelevare ICERP, poluant masurat hidrogen sulfurat, adresa soseaua Vestului

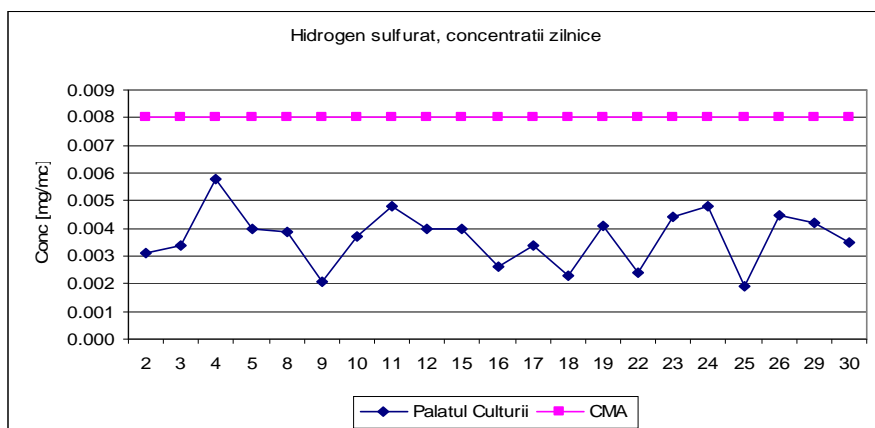


Punct de prelevare Sp de Obstetrica si Ginecologie, poluant masurat hidrogen sulfurat, adresa str M. Bravu

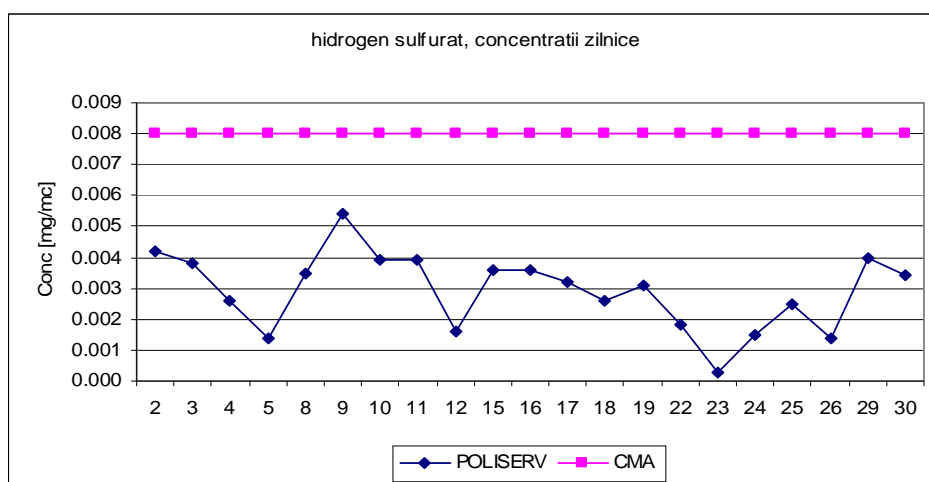


Punct de prelevare Palatul Culturii, poluant masurat hidrogen sulfurat, adresa b-dul Republicii

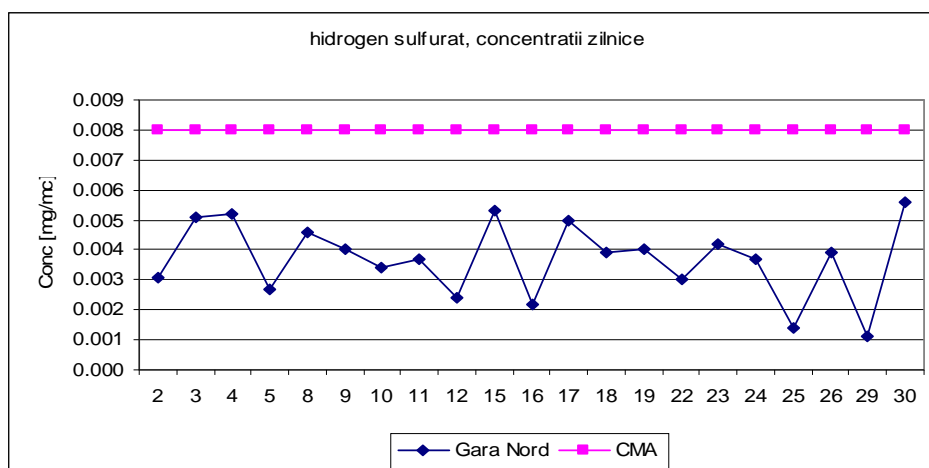




Punct de prelevare POLISERV , poluant masurat hidrogen sulfurat, adresa str Strandului

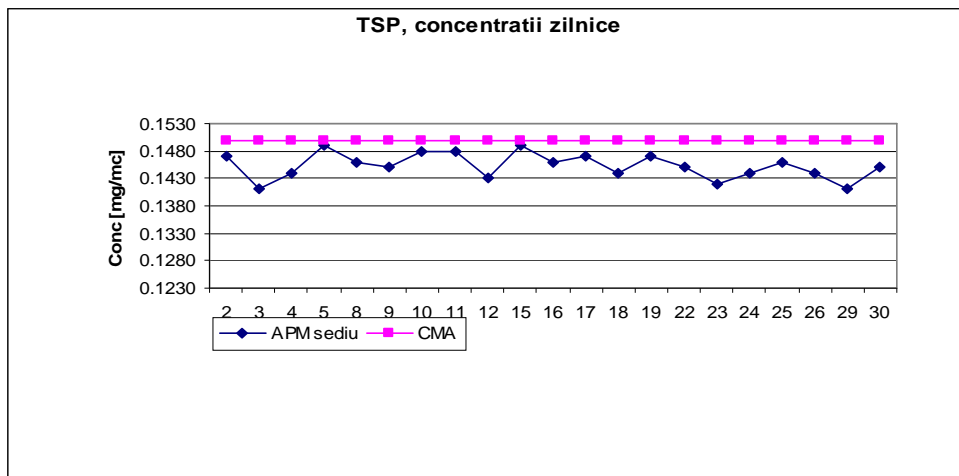


Punct de prelevare Gara Nord , poluant masurat hidrogen sulfurat, adresa str Dragalina

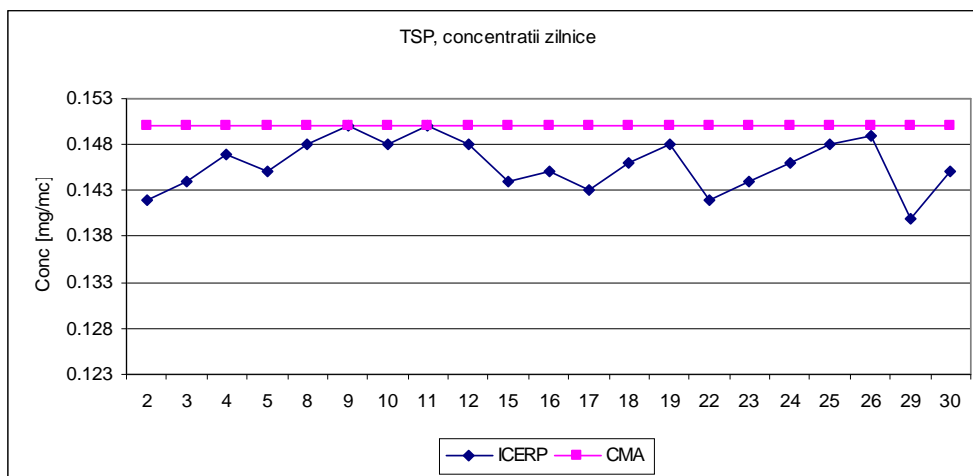


Punct de prelevare APM sediu, poluant masurat TSP, adresa str Ghe Gr Cantacuzino

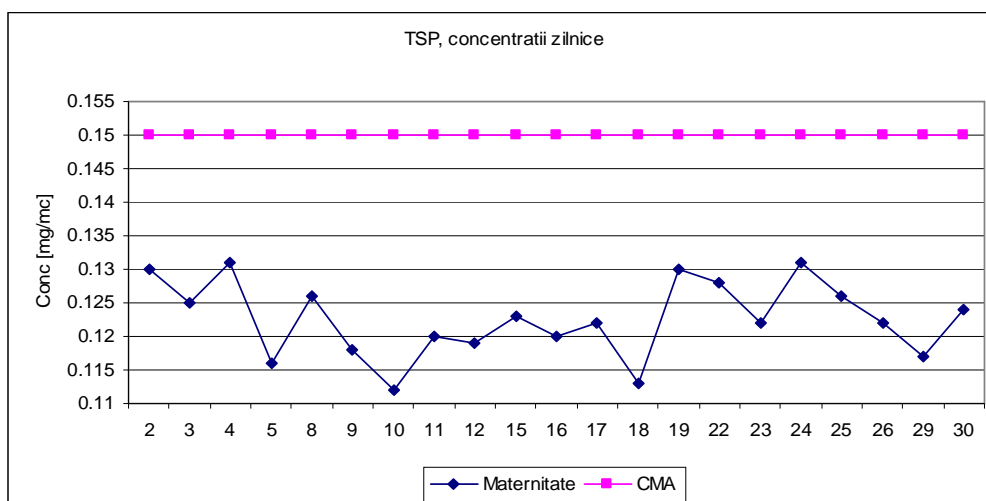




Punct de prelevare ICERP , poluant masurat TSP, adresa soseaua Vestului



Punct de prelevare Sp de Obstetrica si Ginecologie, poluant masurat TSP, adresa str M. Bravu



Datele sunt furnizate in urma prelevarii manuale si determinarilor chimice efectuate in laboratorul APM Prahova.

Sef serviciu Monitorizare si Laboratoare,

Ing. Mateescu Cornelia

Contact APM Prahova

Nume/prenume: Mateescu Cornelia (*conform Anexei 6, din OM 546/2008*)

Adresă de e-mail: office@apmph.anpm.ro Telefon: 0244-544134

