



Agenția pentru Protecția Mediului Prahova

ANEXA 10

Nr.8686/ 10.08.2015

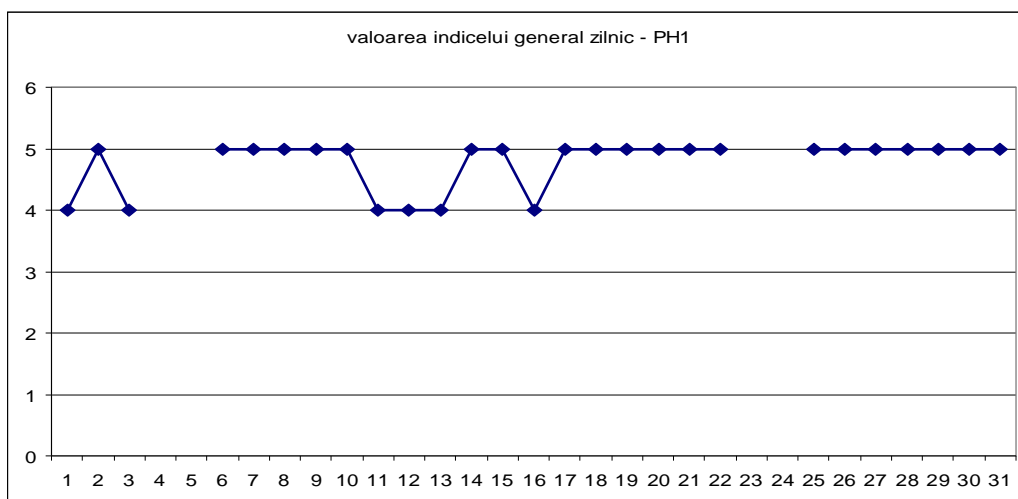
INFORMARE

Evolutia calitatii aerului in luna iulie 2015

Prezentam mai jos evolutia indicelui general de calitate a aerului din rețeaua locala de monitorizare a calitatii aerului automata si manuala.

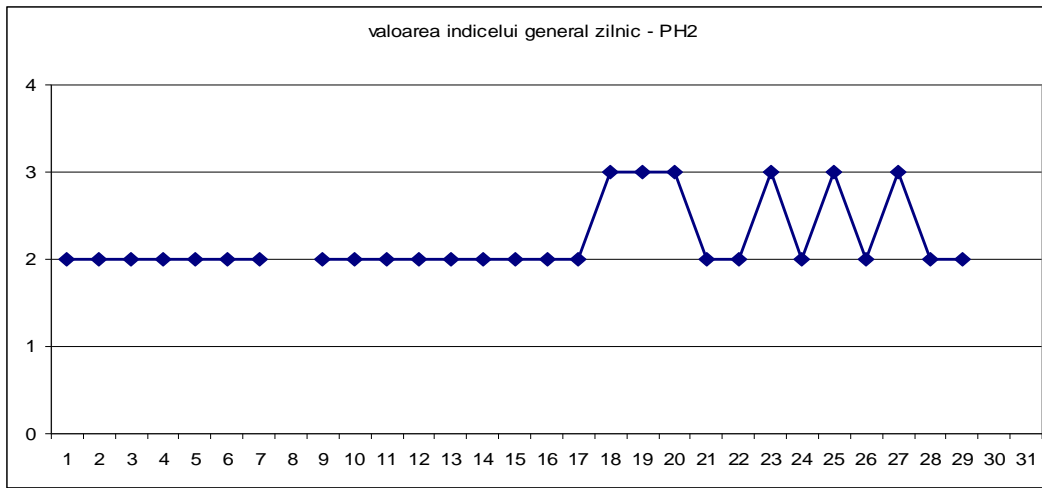
A. Evolutia indicelui general de calitate a aerului din rețeaua locala de monitorizare:

Statia PH1- str Ghe.Gr. Cantacuzino

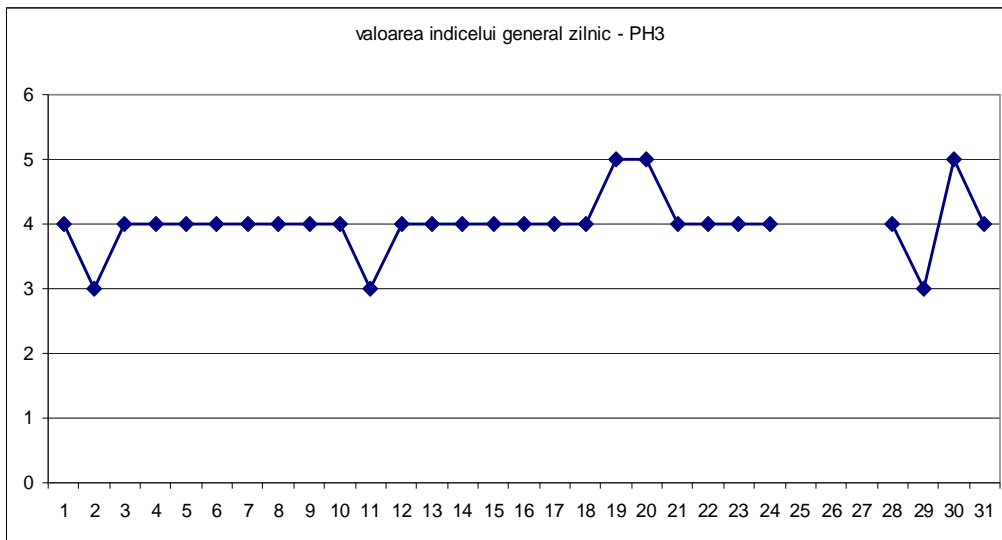


Statia PH2 - p-ta Victoriei

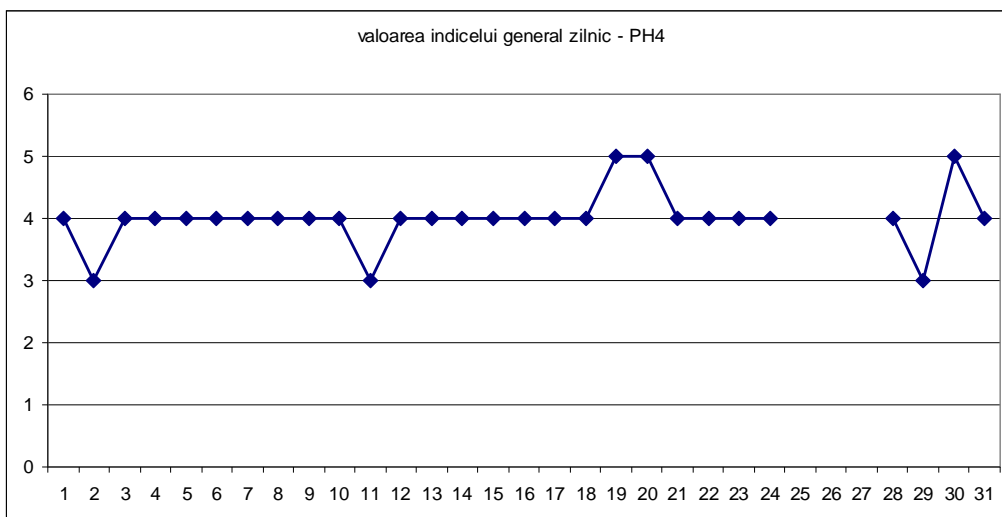




Statia PH3 -Blejoi, primarie

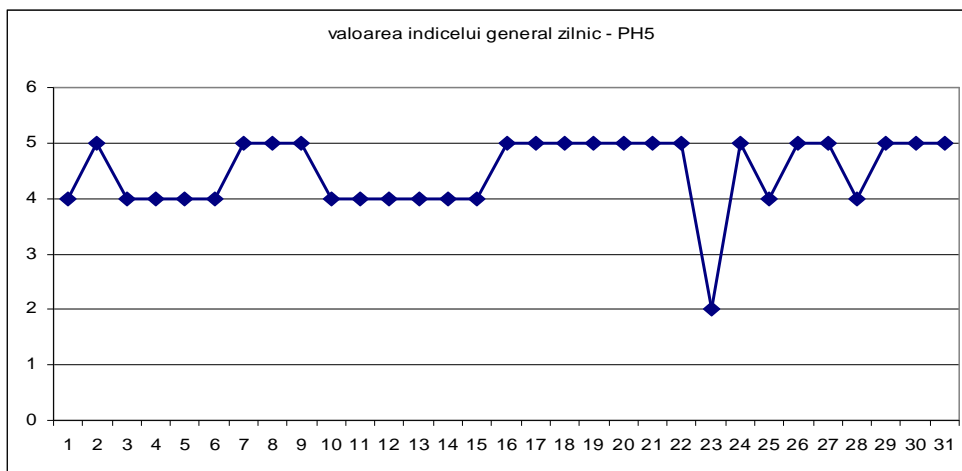


Statia PH4 - Brazi, primarie



Statia PH 5 – B-dul Bucuresti





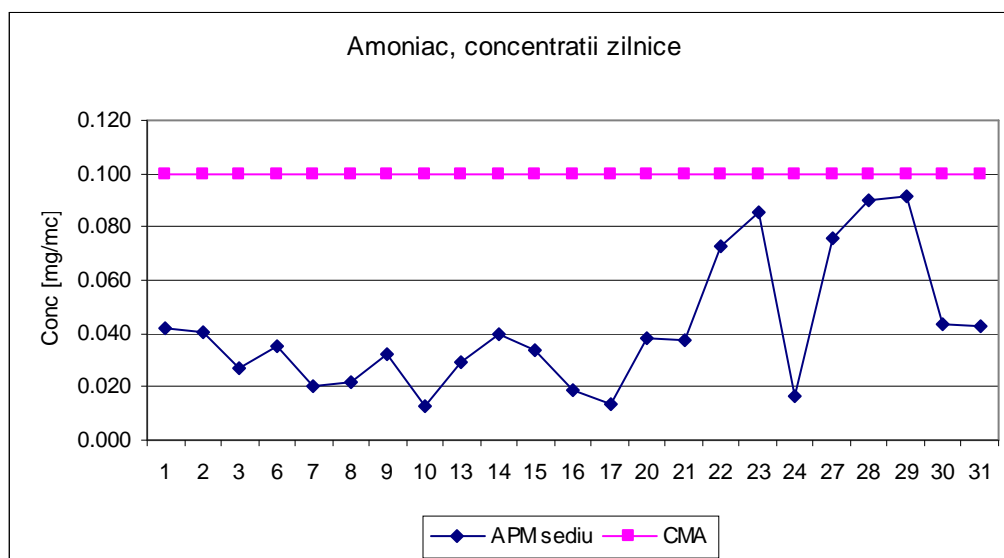
Statia PH 6- Mihai Bravu

In statia automata de monitorizare a calitatii aerului PH6, datorita unor probleme tehnice, nu a putut fi realizat graficul acesteia.

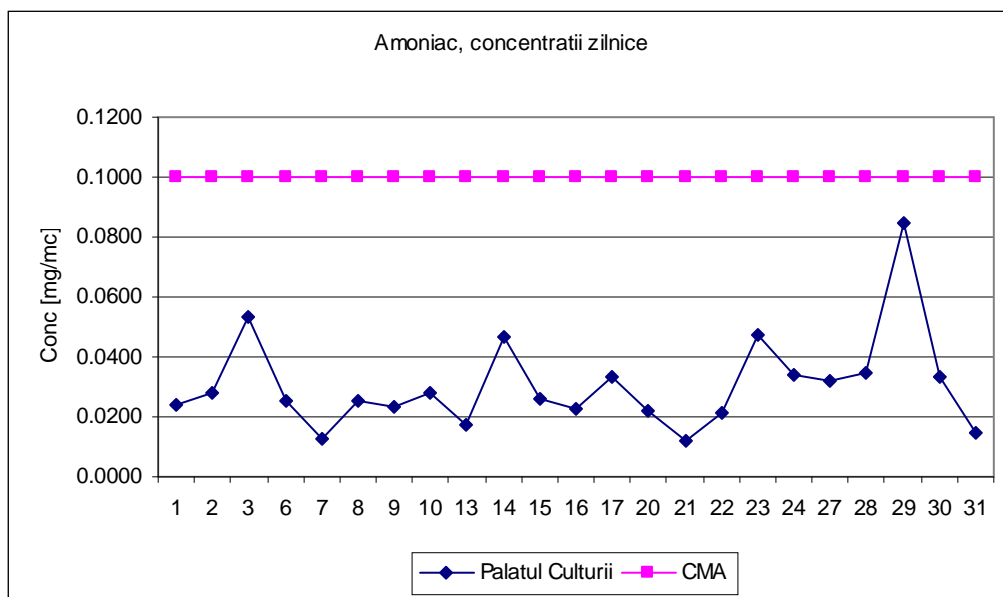
Datele sunt furnizate de statiile automate din Reteaua nationala de Monitorizare a Calitatii Aerului.

B. Variatia concentratiilor medii zilnice pentru indicatorii specifici –statii manuale de monitorizare

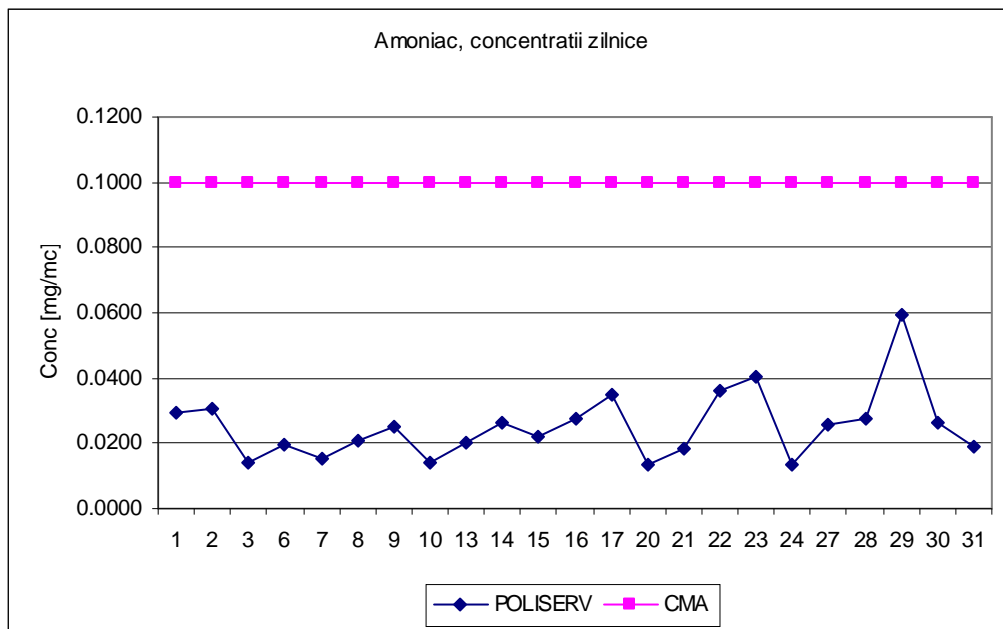
Punct de prelevare APM sediu, poluant masurat amoniac, adresa str Ghe Gr Cantacuzino



Punct de prelevare Palatul Culturii, poluant masurat amoniac, adresa b-dul Republicii

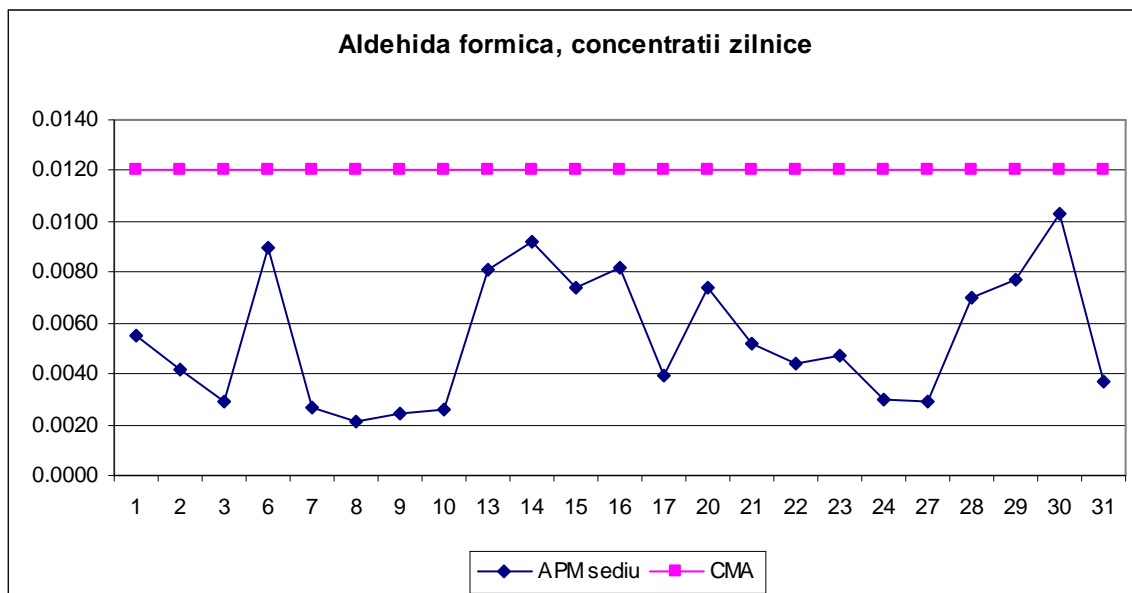


Punct de prelevare POLISERV , poluant masurat amoniac, adresa str Strandului

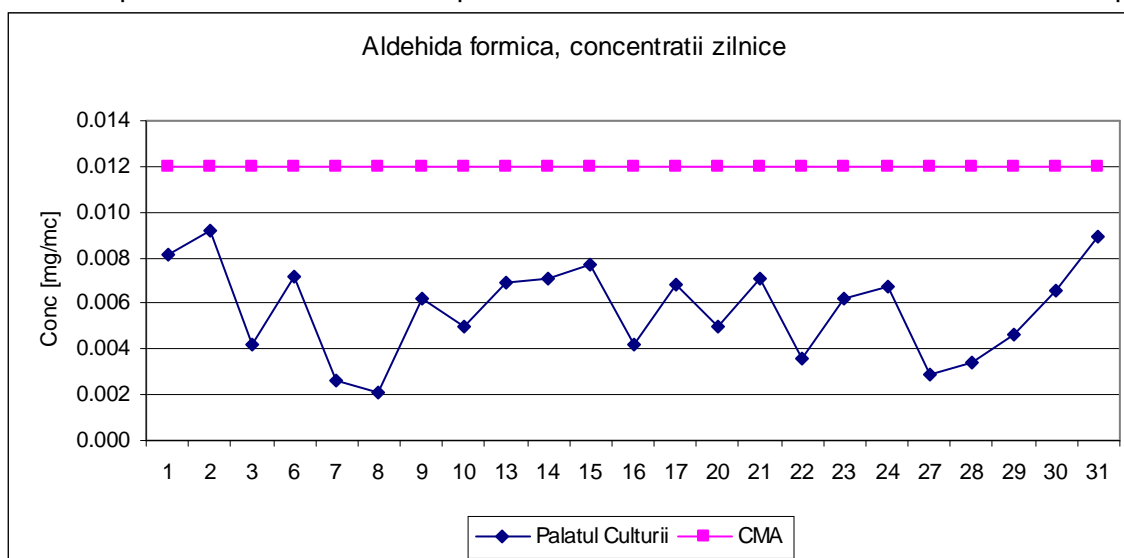


Punct de prelevare APM sediu, poluant masurat aldehida formica, adresa str Ghe Gr Cantacuzino



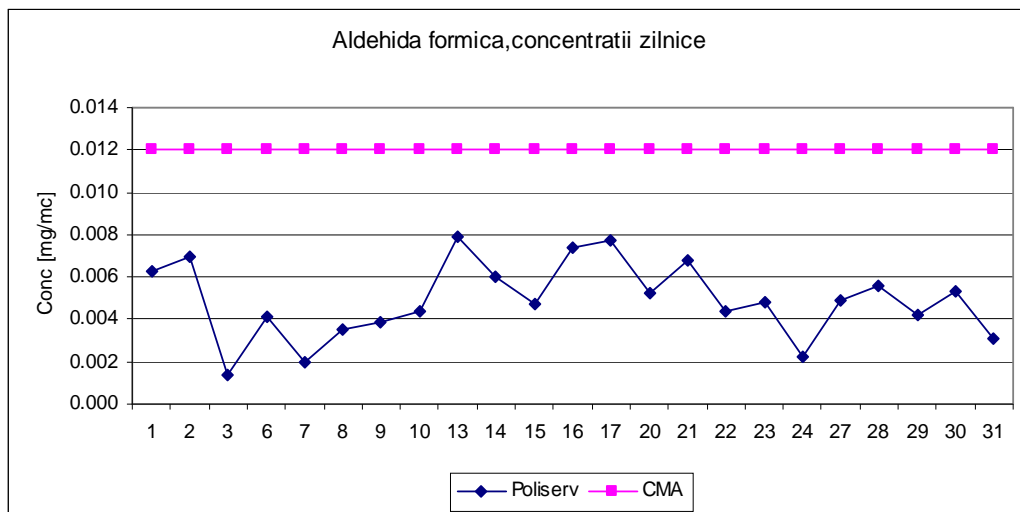


Punct de prelevare Palatul Culturii, poluant masurat aldehida formica, adresa b-dul Republicii

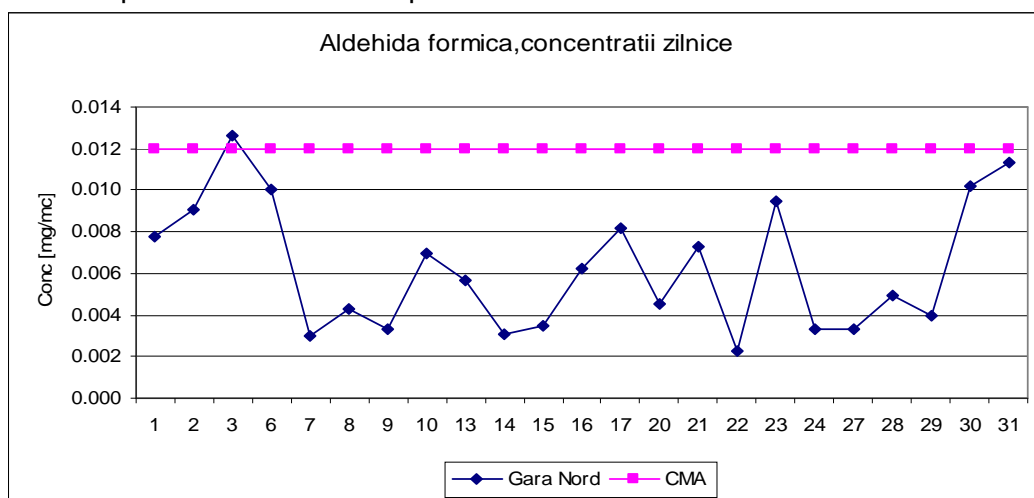


Punct de prelevare POLISERV , poluant masurat aldehida formica, adresa str Strandului

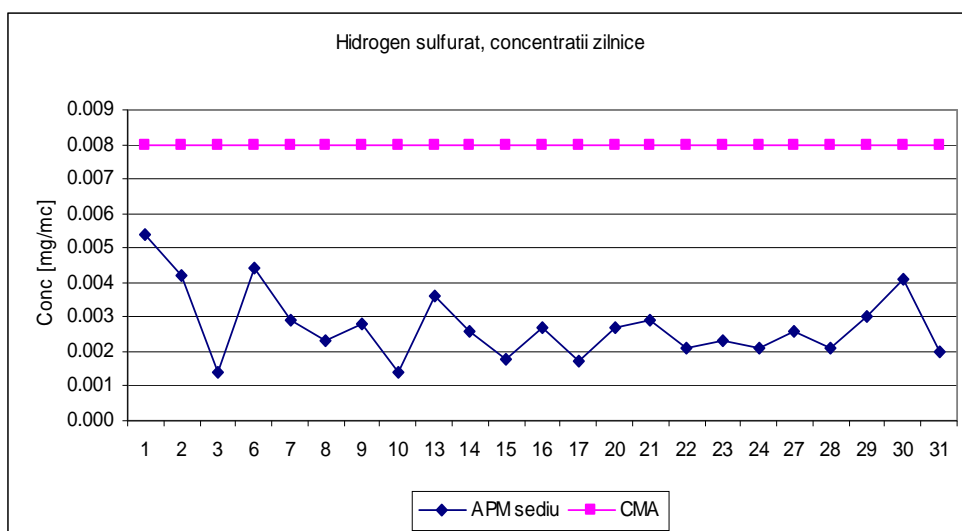




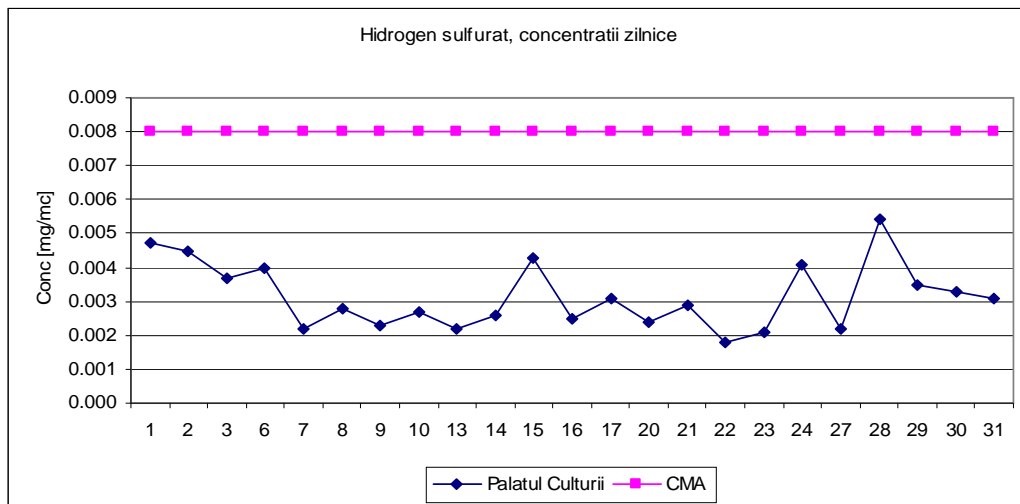
Punct de prelevare Gara Nord , poluant masurat aldehida formica, adresa str Dragalina



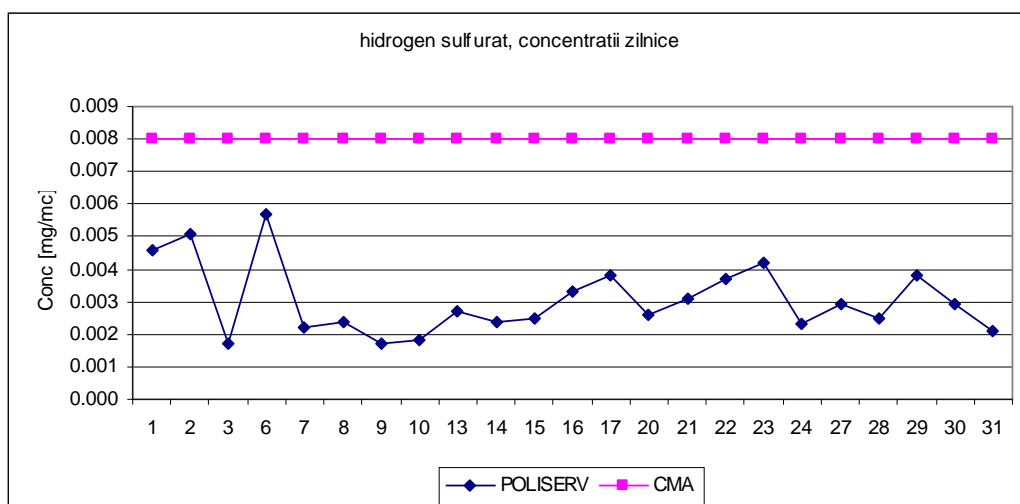
Punct de prelevare APM sediu, poluant masurat hidrogen sulfurat, adresa str Ghe Gr Cantacuzino



Punct de prelevare Palatul Culturii, poluant masurat hidrogen sulfurat, adresa b-dul Republicii

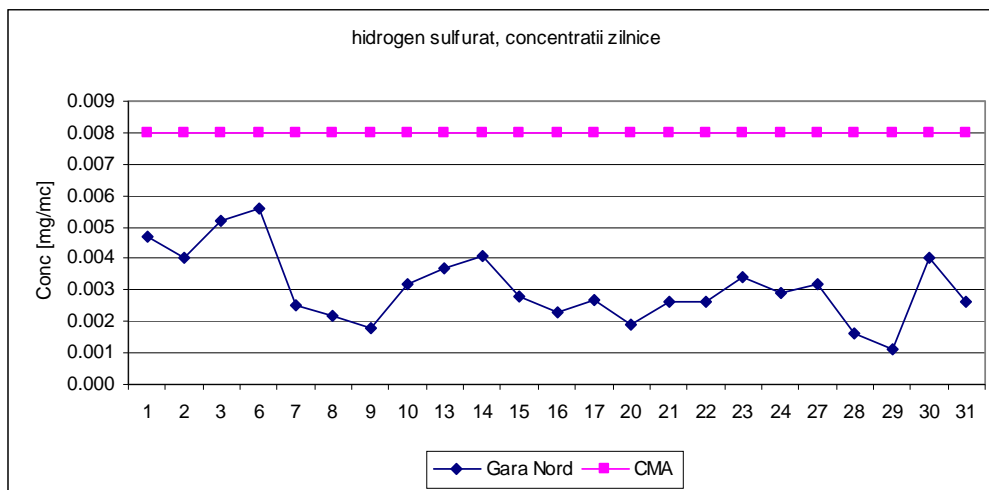


Punct de prelevare POLISERV , poluant masurat hidrogen sulfurat, adresa str Strandului

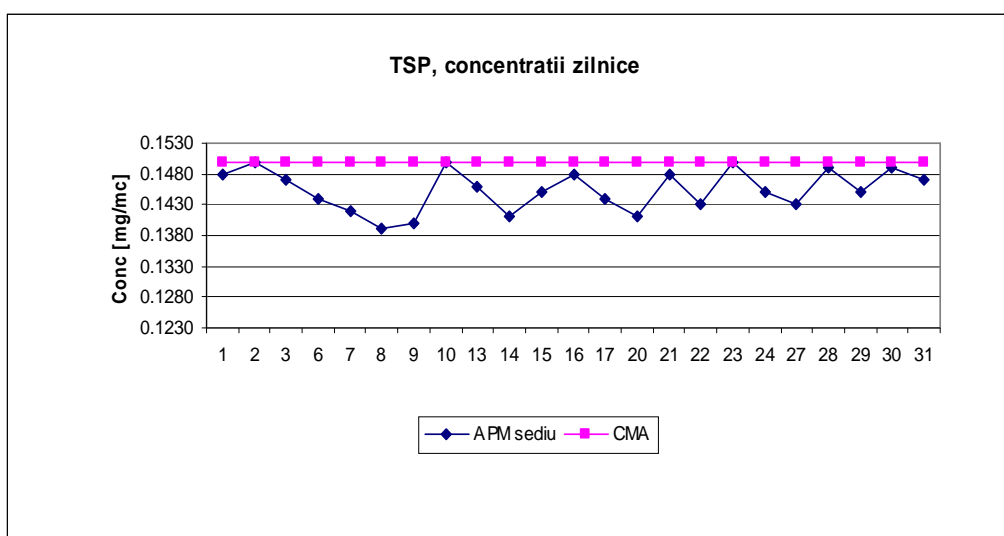


Punct de prelevare Gara Nord , poluant masurat hidrogen sulfurat, adresa str Dragalina





Punct de prelevare APM sediu, poluant masurat TSP, adresa str Ghe Gr Cantacuzino



Datele sunt furnizate in urma prelevarii manuale si determinarilor chimice efectuate in laboratorul APM Prahova.



Sef serviciu Monitorizare si Laboratoare,

Ing. Mateescu Cornelia

Contact APM Prahova

Nume/prenume: Mateescu Cornelia (*conform Anexei 6, din OM 546/2008*)

Adresă de e-mail: office@apmph.anpm.ro Telefon: 0244-544134

